







minilogue xd System Firmware Update

Update Procedures

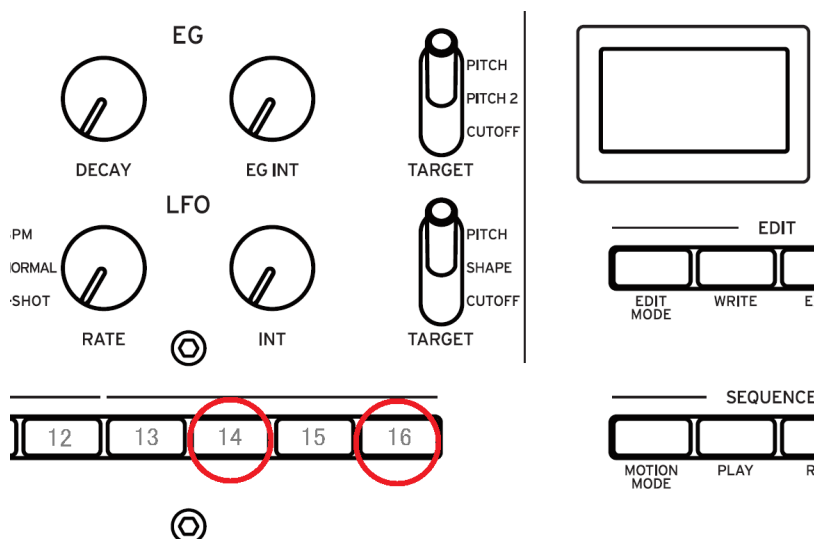
-  This updater is compatible with Windows 8.1(32/64bit) or later.
-  The latest "KORG USB-MIDI Driver" needs to be installed before the update.
If the driver installed on your computer is older than the latest version, install the latest version of the driver before starting the update. (<http://www.korg.com>)
-  Do not operate the minilogue xd or the computer during the update process.
-  Close all other applications before running the updater.
-  After updating, do not downgrade to a previous system version. The operation of a downgraded unit will not be guaranteed.

1. Unzip the "minilogue_xd_Updater_????.zip". (???? is version number)

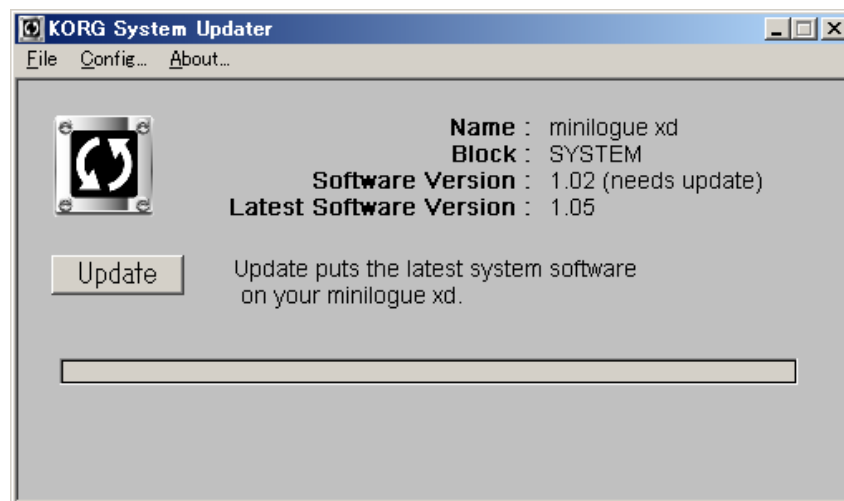
-  Extract all the files in the zip file before proceeding to step 3. The updater may not be able to find necessary files if they were not unzipped.

Update System Firmware

2. Connect the minilogue xd to a computer using a USB cable, then boot the minilogue xd in update mode. Turn on the minilogue xd while holding the [14] and [16] buttons. This will enter the version upgrade mode.

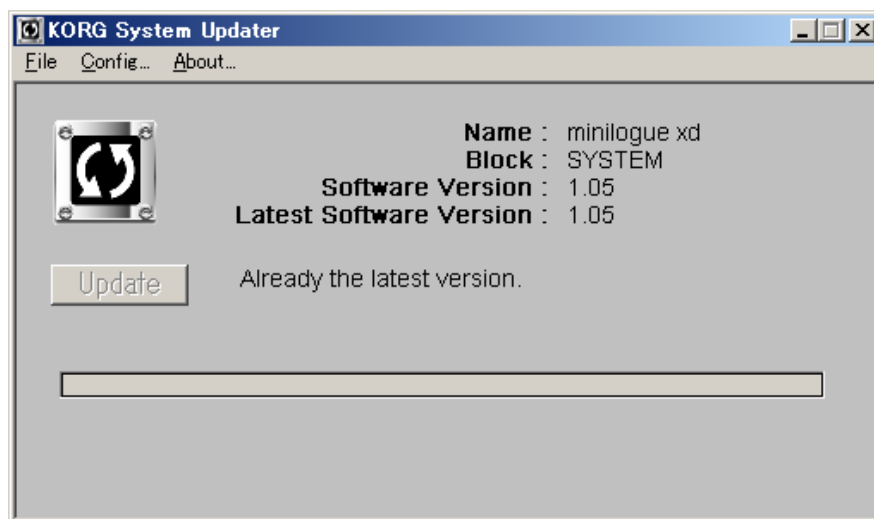


3. Execute the "kmupdate.exe". The following window will appear.



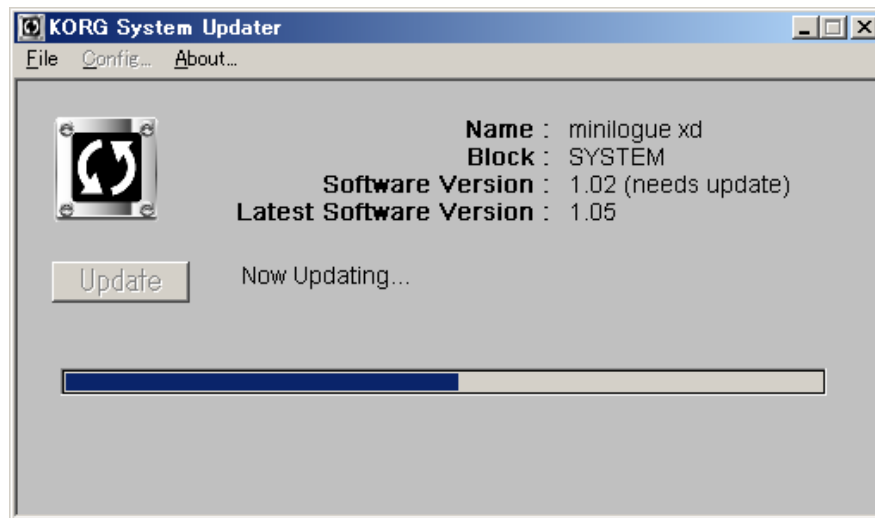
4. Push the Update button in the window to start the process.

▲ If the following message is shown, the system firmware is already up to date, and no change is needed. In this case simply quit the KORG System Updater.



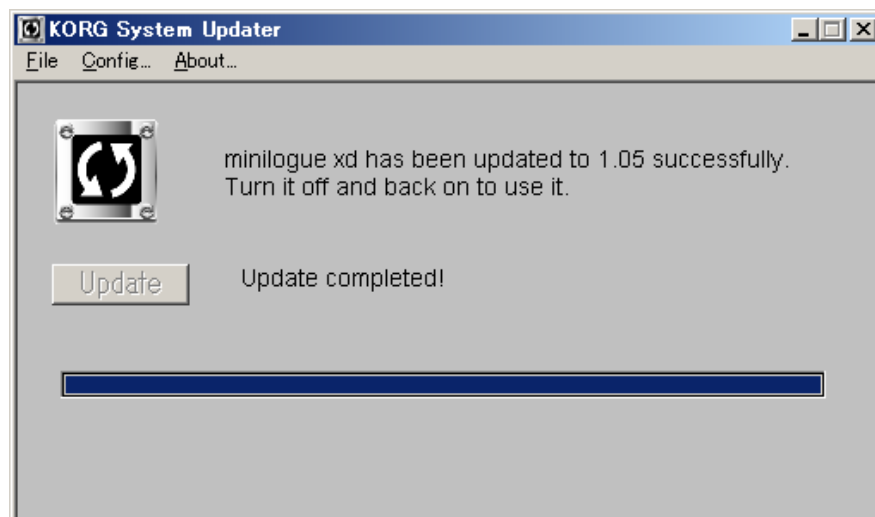
▲ If an "Error message" is shown, confirm that the "minilogue xd" is connected to the computer properly, or that the latest version of the "KORG USB-MIDI Driver" has already been installed.

5. During the updating process, the following window will appear. The whole process might take several minutes to complete.



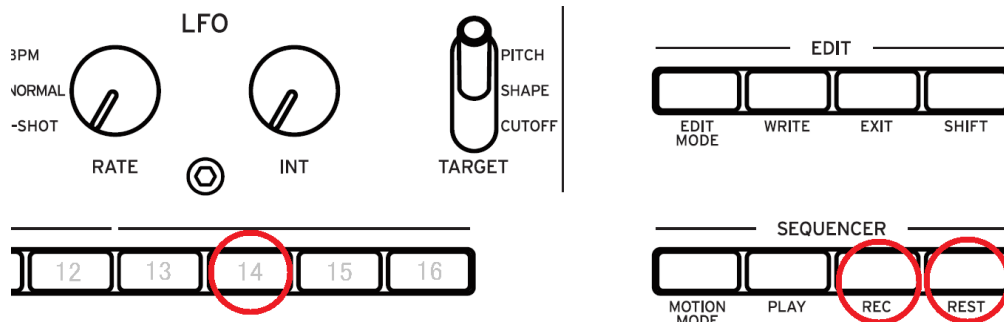
 **Do not turn off the minilogue xd during the update process.**

6. The following message will be shown when the update has successfully completed. This will conclude the entire update procedure.



7. Quit the KORG System Updater.
8. Reboot the minilogue xd. At startup time, if "Update Required voice ????" is displayed, it means a voice firmware update is also required. If "Update Required panel ????" is displayed a panel firmware update is also required. (???? is version number) If only the product name is displayed, the minilogue xd is ready to use.

9. When a panel update is required, turn on the minilogue xd while holding the [14], [REC] and [REST] buttons. This will enter the panel version upgrade mode.

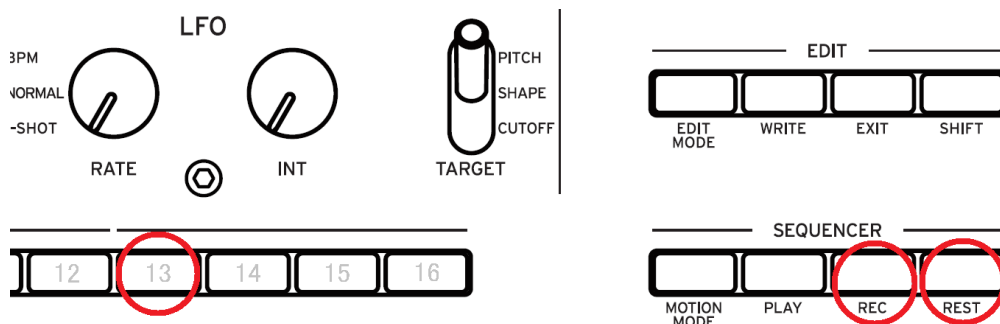


During a panel version upgrade nothing will be displayed. Once the upgrade is complete "Update complete" will be displayed.

Do not turn off the minilogue xd during the update process.

In this case please wait until it completes and "Update complete" is shown on the OLED display, then turn the power off, and on again.

10. When a voice update is required, turn on the minilogue xd while holding the [13], [REC] and [REST] buttons. This will enter the voice version upgrade mode.



Do not turn off the minilogue xd during the update process.

In this case please wait until it completes and "Update complete" is shown on the OLED display, then turn the power off, and on again.