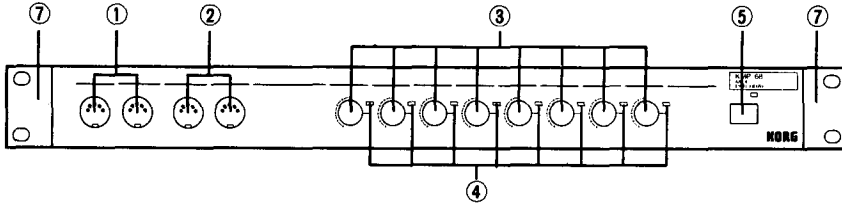
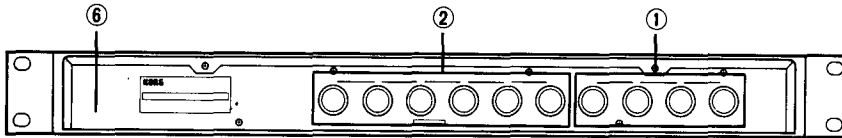


● FRONT PANEL



● REAR PANEL



① MIDI IN Connection

A terminal to receive MIDI signal. Connect to MIDI OUT terminal (or MIDI THRU terminal) from MIDI device.

② MIDI THRU Connection

A terminal to send the MIDI IN signal as selected in the input signal selector of ③ to MIDI device.

③ Input Signal Selector

Selects MIDI IN connection number to be allocated to each MIDI THRU connection. The figures on the side of the selector are the MIDI IN connection number.

④ Monitor LED

An LED which lights when MIDI signal is put into each THRU circuit.

⑤ Power Switch

A power supply switch. When the power is turned on, the LED lights up.

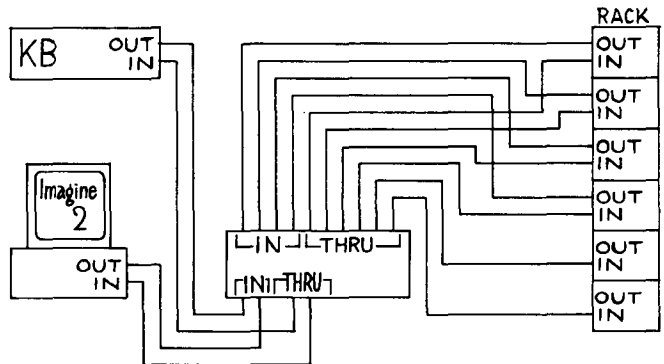
⑥ Power Supply Load-wire

⑦ EIA Rack Adapter

An adapter to rack the unit on the standard 19" case of EIA. Remove screws fixed on the body and use the dedicated screws supplied separately.

Examples of Setting

These are examples of the KMP-68 in a typical MIDI set-up with signal processing and sound sources. Connecting MIDI keyboard and sequencer to the front panel connections offers greater convenience.

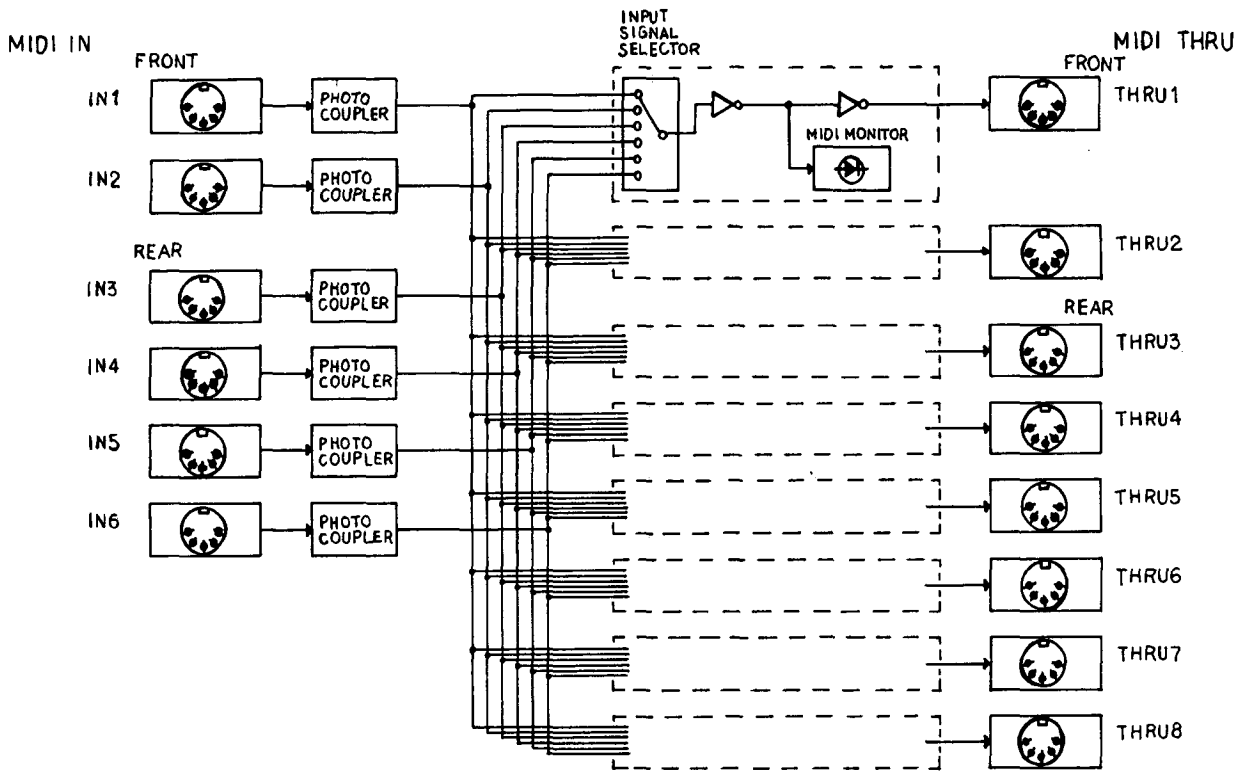


Cautions:

Be careful not to change the selector while MIDI signals are being sent. This may cause misoperation. Switch on the power supply of this unit FIRST. Turning-on after other MIDI device having been turned on may cause misoperation.

Specification:

Control	Input signal selector, 1-8
Connector	MIDI IN 1-6, MIDI THRU 1-8
Power Supply	100 V AC, 50/60 Hz
Dimensions	435 (W) × 231 (D) × 44 (H) mm (EIA1U rack)
Weight	2.1 kg



IMPORTANT SAFETY PRECAUTIONS

■ LOCATION

Do not use this unit for extended periods of time where it is exposed to:

- Direct sunlight
- Extreme of temperature or humidity
- Sand or dust

■ POWER SUPPLY

- Use only with rated AC voltage. If you will be using this unit in an area having a different voltage, be sure to use a proper voltage converter.
- To help prevent noise and degraded sound quality, avoid using the same outlet as other equipment or branching off extension cords shared by other equipment.

■ HANDLE GENTLY!

Don't drop this unit or use more force than necessary to operate switches and keys.

■ CLEANING EXTERIOR SURFACES

Wipe the exterior lightly with a clean, dry soft cloth to remove dust and dirt. Never use strong solvents like benzene, paint thinner, rubbing compound flammable polishing agents.

■ KEEP THIS MANUAL

Keep this manual in a safe place for future reference.

NOTICE:

Korg products are manufactured under strict specifications and voltages required by each country. These products are warranted by the Korg distributor only in each country. Any Korg product not sold with a warranty card or carrying a serial number disqualifies the product sold from the manufacture's/distributor's warranty and liability. This requirement is for your own protection and safety.

KORG[®] KORG INC.

15-12, Shimotakaido 1-chome, Suginami-ku, Tokyo, Japan

Ⓔ