

# microSTATION

MUSIC WORKSTATION

## Editor/Plug-In Editor user's guide



**EDS-i** Enhanced Definition  
Synthesis - integrated

**REMS**

GENERAL  
**MI**

---

# Table of contents

<b>Introduction</b>	<b>1</b>
<b>Main features</b>	<b>1</b>
<b>Please note before use</b>	<b>1</b>
<b>microSTATION Editor and microSTATION Plug-In Editor</b>	
<b>operating requirements</b>	<b>1</b>
Windows	1
Macintosh	1
<b>Installation</b>	<b>2</b>
<b>Installation in Windows</b>	<b>2</b>
Installing the Korg USB-MIDI Driver	2
Installing the microSTATION Editor / Plug-In Editor	3
<b>Installation in Mac OS X</b>	<b>4</b>
<b>Setup</b>	<b>6</b>
<b>microSTATION Setup</b>	<b>6</b>
<b>microSTATION Editor (stand-alone version) setup</b>	<b>6</b>
Windows XP / Windows Vista / Windows 7	6
Mac OS X	6
<b>Setting up the microSTATION Plug-In Editor</b>	<b>7</b>
About the microSTATION Plug-In Editor	7
Using an external mixer to control the microSTATION's audio signal	8
Using your host application to control the microSTATION's audio signal	8
<b>Host application settings</b>	<b>9</b>
Apple - Logic Pro 8	9
Steinberg - Cubase 5	10
Ableton - Live 8	11
MOTU – Digital Performer 7	12
Digidesign – Pro Tools LE 8	13
Cakewalk – SONAR8/8.5	15
Other host applications	16
About MIDI timing	16

---

## **Basic functions and operation..... 17**

### **Start-up ..... 17**

microSTATION Editor .....	17
Windows XP / Windows Vista .....	17
Mac OS X .....	17
microSTATION Plug-In Editor .....	17
About the Preload data .....	17

## **Items on the screen ..... 18**

Connection indicator (KORG logo) .....	18
Mode (COMBI, PROG, SEQ, GLOBAL) / Browser (BROWSE) / Utility (UTILITY): .....	18
Program (Combination/Song) Number, Name: .....	18
Edit Pages, Tabs: .....	19
Realtime Controls: .....	19
ARP: .....	19
Keyboard: .....	19

### **Operating procedure ..... 19**

Selecting a mode .....	19
Selecting programs, combinations, and songs .....	19
Auditioning programs, and selecting a program to edit .....	19
Editor operations .....	20
Selecting pages and tabs .....	22
Selecting a parameter and editing the value .....	22
Selecting and executing utility functions .....	22
Writing (saving) .....	23
Selecting a track .....	25
Functions provided by the microSTATION .....	26

## **Functions specific to the editor ..... 27**

### **Utility commands ..... 27**

Load .....	27
Save .....	27
Write Combination/Program/Arpeggio Patterns/Drumkit .....	27
Rename Arpeggio/Drum kit/External Setup .....	27
Reset Controller MIDI Assign .....	27
Initialize Combination .....	27
Copy ***/Swap ***/Remove *** .....	27
Receive All .....	27
Transmit All .....	27

Receive All Combi/Current Combi Bank/Receive All Prog/ Current Prog Bank/Receive SEQ/Receive Global Data/ Drum Kit/Arpeggio Pattern .....	27
Transmit All Combi/Current Combi Bank/Transmit All Prog/ Current Prog Bank/Transmit SEQ/Transmit Global Data/ Drum Kit/Arpeggio Pattern .....	27
Receive Current Combi/Current Prog/1 SEQ/Current Arpeggio Pattern .....	28
Transmit Current Combi/Current Prog/1 SEQ/Current Arpeggio Pattern .....	28
Import .....	28
Export .....	28
Save as Default .....	28
Select Auto Load File .....	28
All Sound Off .....	28

**Software Setup (Initial settings for the microSTATION Editor) .....29**

Total Recall & Data Sync Settings .....	29
Load data file automatically .....	29
Auto Local Control .....	29
MIDI Settings .....	29
MIDI IN Port / MIDI OUT Port .....	30
Send microSTATION's MIDI Out data to the host application (VST Plug-In Only) .....	30

**Cautions ..... 31**

**USB connection .....31**

If you lose data synchronization with the microSTATION when starting up the editor, please check the following points. ....	31
About the USB port where you connect the microSTATION (Windows only) .....	31

- \* Apple, Mac, Logic pro and Audio Units are trademarks of Apple Inc., registered in the US. and other countries.
- \* Windows XP, Windows Vista, and Windows 7 are trademarks or registered trademarks of Microsoft Corporation in the U.S. and other countries.
- \* Intel, Intel Core, and Pentium are trademarks of Intel Corporation in the U.S. and other countries.
- \* Cubase and VST are trademarks of Steinberg Media Technologies GmbH.
- \* Live is a trademark of Ableton AG.
- \* Digital Performer is a trademark of Mark of the Unicorn, Inc.
- \* Pro Tools LE and RTAS are trademarks or registered trademarks of Avid Technology, Inc., or its subsidiaries or divisions.
- \* Cakewalk is a registered trademark and SONAR are trademarks of Cakewalk, Inc.
- \* All other product and company names are trademarks or registered trademarks of their respective holders.

---

# Introduction

Thank you for purchasing the Korg microSTATION Music Workstation. To help you get the most out of your new instrument, please read this manual carefully.

## Main features

The microSTATION Editor and the microSTATION Plug-In Editor are applications for Macintosh or Windows that allow you to edit the microSTATION's programs, combinations, songs, drum kits, arpeggio patterns, effects, and global settings.

The microSTATION Editor is a stand-alone editor.

The microSTATION Plug-In Editor is an editor that is compatible with the VST, Audio Units, or RTAS formats. It lets you use the microSTATION just like a plug-in instrument from within your DAW (Digital Audio Workstation) software or other host application.

## Please note before use

- Copyright to all software included in this product is the property of Korg Inc.
- The license agreement for this software is provided separately. You must read this license agreement before you install this software. Your installation of this software will be taken to indicate your acceptance of this agreement.

## microSTATION Editor and microSTATION Plug-In Editor operating requirements

*Note:* It is not possible to open and run multiple instances of the microSTATION Editor or the microSTATION Plug-In Editor; this means that it is not possible to edit more than one microSTATION synthesizer simultaneously.

### Windows

- Computer
  - CPU: Intel Pentium III / 1 GHz or better (Pentium D or Core Duo more are recommended)
  - Memory: 512 MB or more (1 GB or more is recommended)
  - Monitor: 1,024 x 768 pixels, 16-bit color or betterA computer with a USB port, that satisfies the requirements of Windows XP / Windows Vista.
- Operating system
  - Microsoft Windows XP Home Edition or Professional, Service Pack 2 or later.
  - All editions of Microsoft Windows Vista Service Pack 2 or later (excluding 64-bit editions).
  - Microsoft Windows 7
  - However, only the standalone version will work on 64-bit editions of Windows 7 and Windows Vista Service Pack 2.

### Macintosh

- Computer
  - CPU: PowerPC G4 800 MHz or better (Intel Mac is supported), G5 or Core Duo or better is recommended
  - Memory: 512 MB or more (1 GB or more is recommended)
  - Monitor: 1,024 x 768 pixels, 32,000 colors or betterAn Apple Macintosh with a USB port that satisfies the requirements of Mac OS X
- Operating system
  - Mac OS X version.10.4.11 or later

*Note:* microSTATION Plug-In Editor must also satisfy the operating requirements of the host application.

---

# Installation

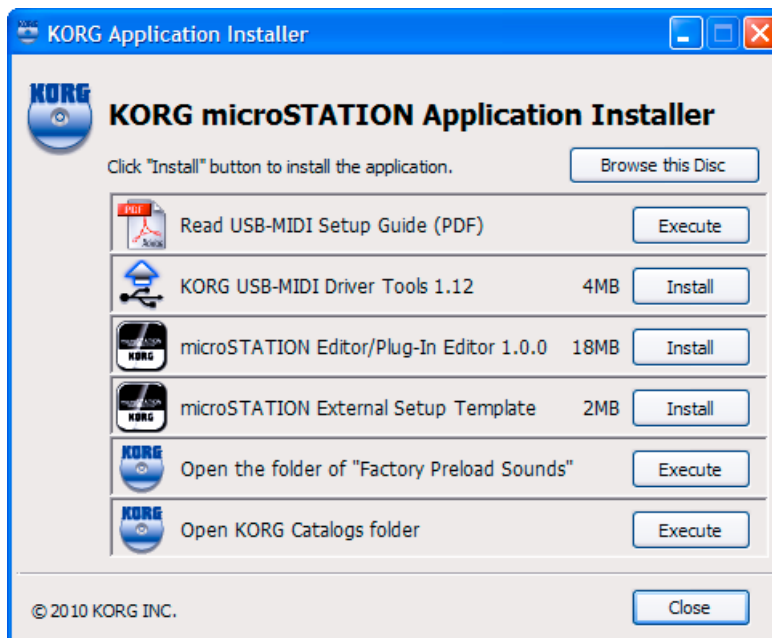
## Installation in Windows

To install the microSTATION Editor and the microSTATION Plug-In Editor into Windows XP, Windows Vista, or Windows 7 proceed as follows.

🔍 If you want to connect the microSTATION to your computer via USB and use the microSTATION Editor and the microSTATION Plug-In Editor, you must install the Korg USB-MIDI Driver. (Refer to the USB-MIDI Setup guide for details on how to install the Korg USB-MIDI Driver.)

**1** Insert the included accessory disc into your computer's disc drive. Normally the "microSTATION Application Installer" will start up automatically. If your computer is set so the installer does not run automatically, double-click "KorgSetup.exe" on the accessory disc.

**2** From the list, select the applications that you want to install, and click [Install].



The applications you selected will begin the installation process.

**3** Follow the on-screen directions to install the desired applications, such as microSTATION Editor.

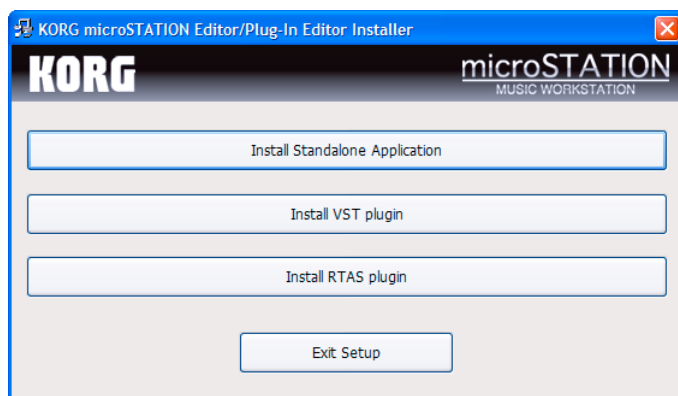
**4** When you've finished installing all the selected software, close the installer.

### Installing the Korg USB-MIDI Driver

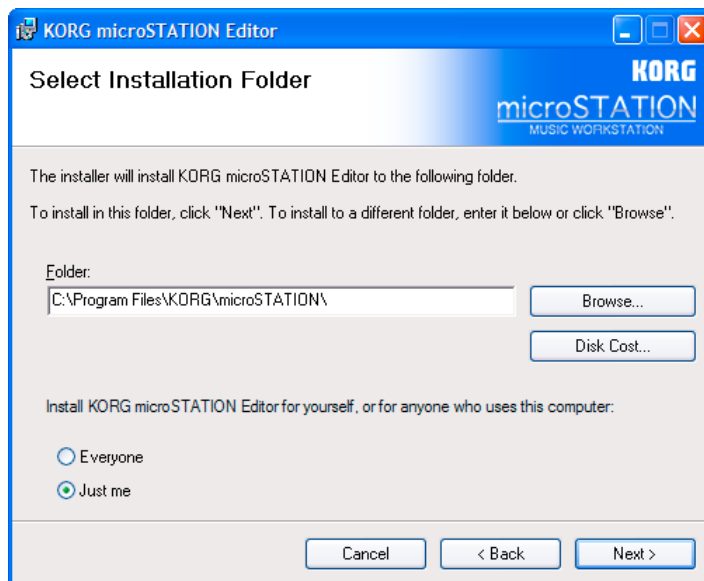
Refer to the USB-MIDI Setup guide for details on how to install the Korg USB-MIDI Driver.

## Installing the microSTATION Editor / Plug-In Editor

- 1 The “microSTATION Editor/Plug-In Editor Installer” window will appear. Select and install all desired components, such as, the Editor (Standalone), Plug-In Editor (VST), and/or Plug-In Editor (RTAS). For example if you want to install the stand-alone version, click [Install Standalone Application].



- 2 The microSTATION Editor screen will appear. Click [Next>].
- 3 The “Welcome to the microSTATION Editor setup wizard” screen will appear. Click [Next>].
- 4 The “microSTATION Editor information” screen will appear. Read the displayed content, and click [Next>].
- 5 The “License agreement” will appear. Carefully read the contents, and if you agree, check “I accept the terms of the license agreement” and click [Next>].
- 6 The “Select installation folder” screen will appear. Choose the location and user(s) for which you want to install the software, and click [Next>].



- 7 The “Verify installation” will appear. To proceed with the installation, click [Next>]. Installation will begin.
- 8 If the installation was successful, click [Close]. The “microSTATION Editor/Plug-In Editor Installer” window will appear.
- 9 Next you will install the plug-in version(s) that you want to use. Using the procedure described above, begin with step 1 and install the plug-in version(s) that you want to use. If you don’t want to install the VST plug-in version or RTAS plug-in version, click [Exit Setup] to end the installation. When you’ve finished installing the application(s) you want, click [Exit Setup] to exit the installer.

## Installation in Mac OS X

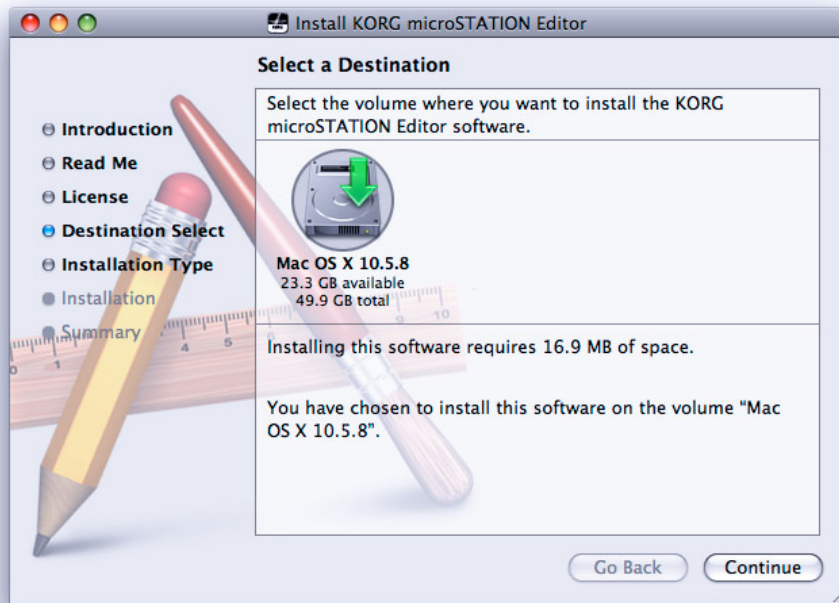
To install the microSTATION Editor and microSTATION Plug-In Editor into Mac OS X, use the following procedure.

- ⚡ You must install the KORG USB-MIDI Driver if you want to connect the microSTATION to your computer via USB and use the microSTATION Editor or the microSTATION Plug-In Editor. (For details on installing the KORG USB-MIDI Driver, refer to the USB-MIDI Setup guide.)
- 1 Insert the included accessory disc into your disc drive.
  - 2 Start up the installer by double-clicking on “microSTATION Editor Installer.pkg” located in the “microSTATION Editor” folder of the accessory disc.
  - 3 Depending on the version of your Mac’s operating system, a confirmation dialog box may appear at this point. If required, please enter your password and click [OK]. When the installer starts up, the following screen will appear. Click [Continue].





- 4 The “Important information” screen will appear. Read the contents, and click [Continue].
- 5 The “License agreement” screen will appear. Carefully read the contents, and click [Continue]. A dialog box will ask whether you accept the terms of the license agreement. If you accept, click [Agree].
- 6 A screen where you can “Select a Destination” will appear. Select the installation destination of your choice and click [Continue].



- 7 The “Standard (Easy Installation)” dialog box will appear. Click [Install].
  - 8 An authentication dialog box may appear at this point, depending on the version of your operating system. If so, type your password and click [OK]. Depending on the version of your operating system, you might see a dialog box stating “Your computer must be restarted after installation.” Click [Continue installation] to begin with the installation.
  - 9 When the installation has been successfully completed, click [Restart] to exit the installer.
- ⚠ You can't connect two or more microSTATION units to a single computer and use them simultaneously.

*Note:* Under Mac OS X, the plug-in version will also be installed in the appropriate folder.

---

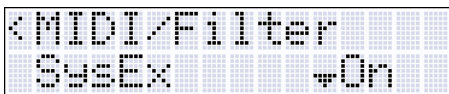
# Setup

## microSTATION Setup

⚠ If you want to use the microSTATION Editor with the microSTATION connected to your computer via USB, you must make sure that you've finished installing and setting-up the KORG USB-MIDI Driver before you start up the microSTATION Editor.

**1** Use a USB cable to connect the microSTATION's USB connector to the USB port of your computer.

**2** In the microSTATION's Global/Media mode, make sure that MIDI Filter "SysEx" is on. (The factory setting is off.)



⚠ If you turn off the MIDI Filter "SysEx" setting of the microSTATION itself after starting up the microSTATION Editor, the microSTATION and the microSTATION Editor will become unable to communicate. Likewise, loading the preload data into the microSTATION will cause the MIDI Filter "SysEx" to be turned off (the factory setting), meaning that the microSTATION and the microSTATION Editor will become unable to communicate. If this occurs, you'll need to turn the microSTATION's MIDI Filter "SysEx" setting back on.

## microSTATION Editor (stand-alone version) setup

Start up the microSTATION Editor and verify that it's functioning correctly.

### Windows XP / Windows Vista / Windows 7

#### Starting up the microSTATION Editor

You can start up the editor by clicking the taskbar [Start] button – [All Programs] and then pointing to "KORG" – "microSTATION" – "microSTATION Editor."

Alternatively, navigate to the "KORG" folder → "microSTATION" folder, and double-click the "microSTATION Editor.exe" icon.

The "KORG" folder is in the location you selected during installation. By default it's in the "Program Files" folder.

### Mac OS X

#### Starting up the microSTATION Editor

Navigate to the "Applications" folder – "KORG" folder – "microSTATION" folder, and double click the "microSTATION Editor" icon.

## Setting up the microSTATION Plug-In Editor

🔧 If you want to use the microSTATION Editor with the microSTATION connected to your computer via USB, you must make sure that you have finished installing and setting-up the KORG USB-MIDI Driver before you start up the microSTATION Editor.

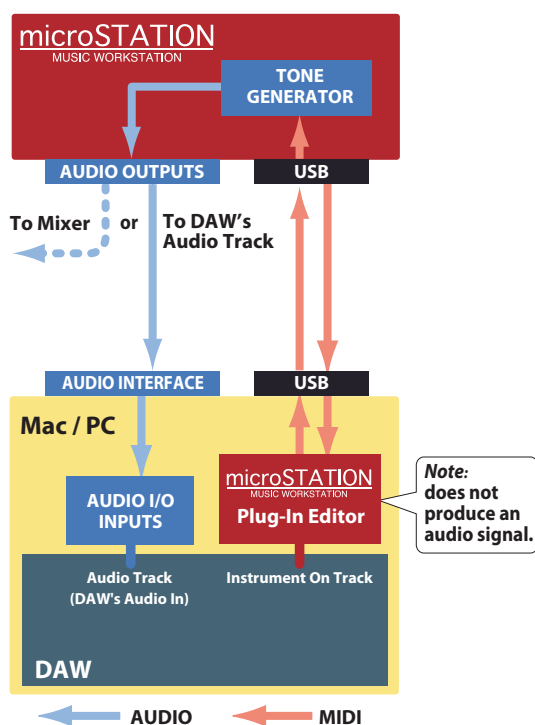
This section explains how to set up the microSTATION Plug-In Editor in your host application and adjust the settings so that it will function correctly.

### About the microSTATION Plug-In Editor

Parameter data is sent and received between the microSTATION Plug-In Editor and the microSTATION. Unlike typical plug-in instruments, the microSTATION Plug-In Editor does not produce an audio signal.

Your microSTATION will output audio signals when the microSTATION Plug-In Editor sends it MIDI messages.

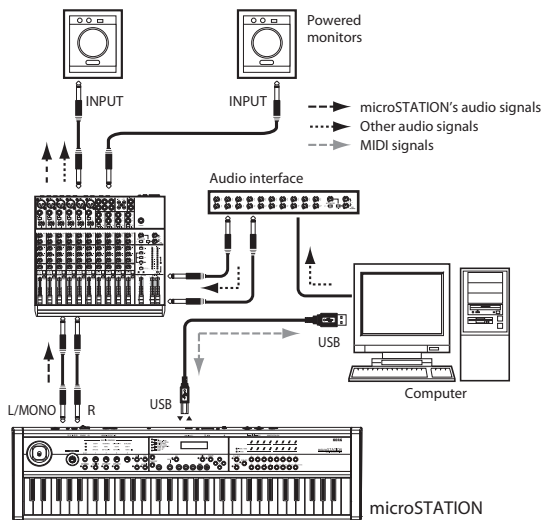
If you want to send the microSTATION's audio signal to an audio track of your host application and use it in conjunction with a plug-in effect etc., refer to "Using your host application to control the microSTATION's audio signal" (p.8)



*Note:* Because the microSTATION Plug-In Editor does not handle audio signals, you can't insert a plug-in effect into the channel of the track where the microSTATION Plug-In Editor is inserted, or send its audio signal via a send or bus.

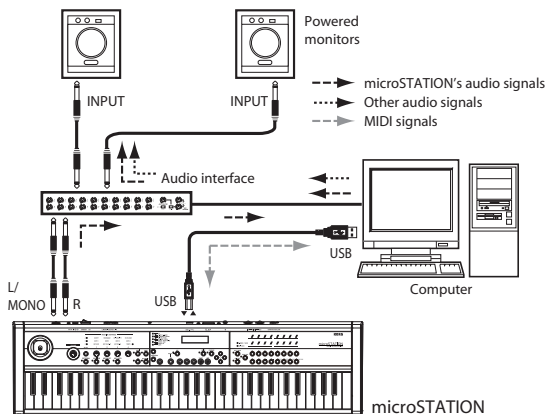
## Using an external mixer to control the microSTATION's audio signal

If you want to mix the microSTATION's audio signals with the audio signals sent from your host application via your audio interface, or with audio signals from another sound module, you can connect devices as shown below.



## Using your host application to control the microSTATION's audio signal

If you want to apply a plug-in effect to the microSTATION's audio signal, or to control the microSTATION's audio signal in your host application along with other audio tracks, connect the microSTATION to your audio interface and route the audio signal into your host application. Refer to the example explanations for various popular host applications on the following pages.



*Note:* For details on creating audio tracks, MIDI tracks, and plug-in instrument tracks, and on how to perform operations and adjust settings in your host application, refer to the host application's owner's manual.

---

## Host application settings

The following material explains how to start up the microSTATION Plug-In Editor in your host application and select the appropriate settings for it to function properly. Please proceed to the specific explanation for the system that you're using.

### Apple - Logic Pro 8

- 1 Start up Logic Pro 8.
- 2 Create a Software Instrument Track, and initialize the "microSTATION Plug-In Editor."



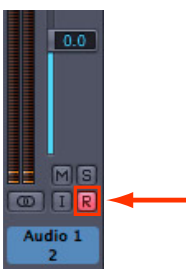
Software Instrument Track

- 3 To route the microSTATION's audio signal into Logic Pro 8, create an audio track or an audio AUX track. On the I/O source for that track, select the audio interface input where you've connected the microSTATION's audio signal.



Audio Track

- 4 If you're routing the microSTATION's audio signal to an audio track, arm the REC button so that you can hear/monitor the audio signal. If you are routing the microSTATION's audio signal to an audio AUX track, this setting is not necessary.



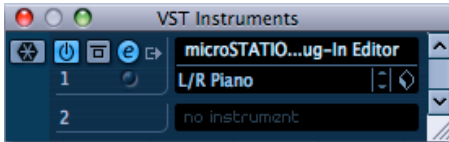
Audio Track

---

## Steinberg - Cubase 5

1 Start up Cubase 5 and create a project.

2 In the VST Instruments window, start up the “microSTATION Plug-In Editor.”



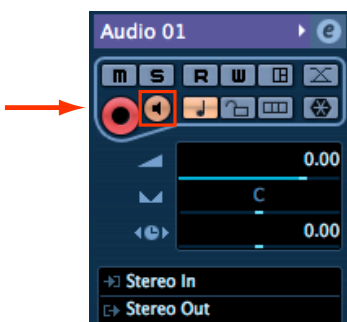
3 Create a MIDI track. In the output section of that MIDI track, choose the “microSTATION Plug-In Editor” which you started up in the VST Instruments window.



4 To route the microSTATION’s audio signal to Cubase 5, create an audio track. On the input section of the audio track, select the audio interface input where you’ve connected the microSTATION’s audio signal.



5 Turn the Monitor button on so that you can hear/monitor the audio signal.

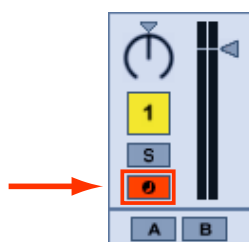


## Ableton - Live 8

- 1 Start up Live 8, and choose “View” → “Session View.”
- 2 From the plug-in device browser, drag and drop the “microSTATION Plug-In Editor” onto the session view. This will create a MIDI track with the “microSTATION Plug-In Editor” started up.  
Verify that the “microSTATION Plug-In Editor” is running in the MIDI track view.

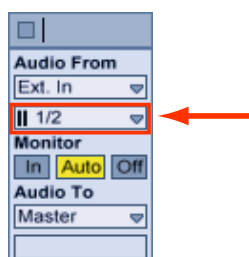


- 3 Press the arm button so that the MIDI input from the external source will be sent to the “microSTATION Plug-In Editor.”



MIDI Track

- 4 To route the microSTATION’s audio signal to Live 8, create an audio track. In the input area of the audio input/output section, select the audio interface input where you’ve connected the microSTATION’s audio signal.



Audio Track

- 5 Set the Monitor setting to “In” so that you can hear the audio signal of the microSTATION.

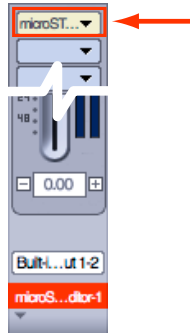


Audio Track

## MOTU – Digital Performer 7

1 Start up Digital Performer 7.

2 Create an instrument track. Start up the “microSTATION Plug-In Editor.”



Instrument Track

3 Create a MIDI track. Choose the “microSTATION Plug-In Editor” as the output of that MIDI track.

PLAY	XMPT	OUTPUT	TAKE	ENA	COL	TRACK NAME
			1			Conductor
		microSTATION Plug-In Editor-1-1	1			Track-1
		Built-in Output 1-2	1			microSTATION Plug-In Editor-1

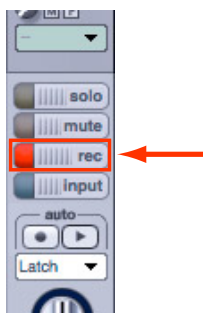
Track Windows–MIDI Track

4 To route the microSTATION’s audio signal to Digital Performer 7, create an audio track or an AUX track. On the input section of that track, select the audio interface input where you’ve connected the microSTATION’s audio signal.

INPUT	LEVEL	PLAY	XMPT	OUTPUT	TAKE	ENA	COL	TRACK NAME
					1			Conductor
				M50 Plug-In Editor-1-1	1			Track-1
				DLSMusicDevice-1-1	1			Track-2
				DLSMusicDevice-2-1	1			Track-3
				DLSMusicDevice-3-1	1			Track-4
Built-in Audio 1-2				Built-in Audio 1-2	1			Audio-1
Built-in Audio 1-2				Built-in Audio 1-2	1			Audio-2
Built-in Audio 1-2				Built-in Audio 1-2	1			Audio-3

Track Windows–MIDI Track

5 If you’re routing the microSTATION’s audio signal to an audio track, arm the REC button so that you can hear the audio signal.  
If you are routing the microSTATION’s audio signal to an AUX track, this step is not necessary.



Audio Track



---

## Digidesign – Pro Tools LE 8

- 1 Start up Pro Tools LE 8, and open a session.
- 2 Create an audio track (stereo), and start up the “microSTATION Plug-In Editor.”



Audio Track

- 3 Create a MIDI track. Choose the “microSTATION Plug-In Editor” as the output of that MIDI track.



MIDI Track

- 4 To route the microSTATION's audio signal to Pro Tools LE 8, create an audio track or an AUX input track. On the input section, please select the audio interface input where you've connected the microSTATION's audio signal.



Audio Track

- 
- 5 If you're routing the microSTATION's audio signal to an audio track, arm the REC button so that you can hear/monitor the audio signal.  
If you are routing the microSTATION's audio signal to an AUX input track, this setting is not necessary.



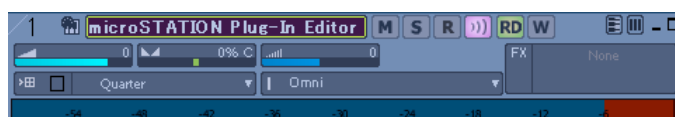
Audio Track

## Cakewalk – SONAR8/8.5

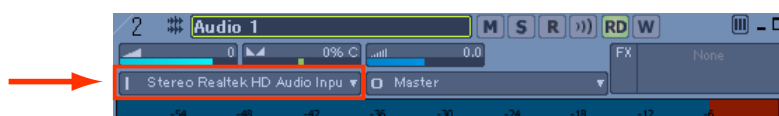
- 1 Start up SONAR 8/8.5, and open a project.
- 2 From the Synth Rack, choose the “microSTATION Plug-In Editor,” and create an instrument track at the same time.



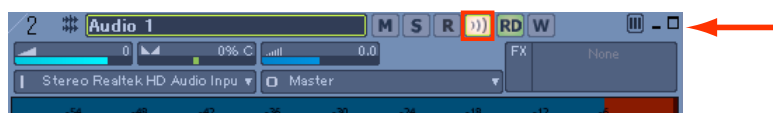
- 3 An instrument track with the microSTATION Plug-In Editor assigned to it will be created.



- 4 If you want to input the microSTATION’s audio signal to your host application, first create an audio track. For the input of that audio track, select your audio interface’s input where the microSTATION’s audio signal is being input.



- 5 To hear the microSTATION’s audio signal that’s being input to the audio track, turn on the input echo button of that audio track.



---

## Other host applications

- 1** Start up your host application.
- 2** Start up the “microSTATION Plug-In Editor” as a plug-in instrument.
- 3** Create a MIDI track. Choose the “microSTATION Plug-In Editor” as the output of that MIDI track.
- 4** To route the microSTATION’s audio signal to your host application, create an audio track. On the input section of that audio track, select the input where the microSTATION’s audio is connected.
- 5** Enable the monitor function on the audio track that will be receiving the audio signal from the microSTATION.

*Note:* The instructions given here for “Other host applications” may not necessary be appropriate for setting-up all host applications. Please refer to the instructions for a host application that has a similar structure to the host application you’re using, and always refer to the owner’s manual for the specific host application that you are using.

### About MIDI timing

If you experience irregularities in MIDI timing, please adjust the settings so that MIDI messages are sent directly to the microSTATION rather than being routed through the microSTATION Plug-In Editor. In this case, select the microSTATION’s SOUND port as the MIDI OUT destination of the MIDI track in your host application, so that the MIDI messages will be sent directly to the microSTATION.

*Note:* For details on how to create a MIDI track and specify the MIDI OUT destination for that MIDI track, refer to the host application’s owner’s manual.

---


# Basic functions and operation

## Start-up

### microSTATION Editor

- From the “KORG”-“microSTATION” folder, start up the “microSTATION Editor.”

*Note:* When you start up the editor, the microSTATION programs and other settings can be loaded automatically. (☞ “Software Setup (Initial settings for the microSTATION Editor)” on page 29)

 Don't touch the keyboard or the mouse of your computer while data is being sent or received.

### Windows XP / Windows Vista

Access the “KORG” folder from the taskbar via [Start] – [All Programs].


### Mac OS X

The “KORG” folder is located in the “Applications” folder.

### microSTATION Plug-In Editor

For details on starting-up the microSTATION Plug-In Editor, refer to the section for your host application in “Setting up the microSTATION Plug-In Editor” (☞ p.7).

*Note:* When you start up the editor, the microSTATION programs and other settings can be loaded automatically. (☞ “Software Setup (Initial settings for the microSTATION Editor)” on page 29)

 Don't touch the keyboard or the mouse of your computer while data is being sent or received.

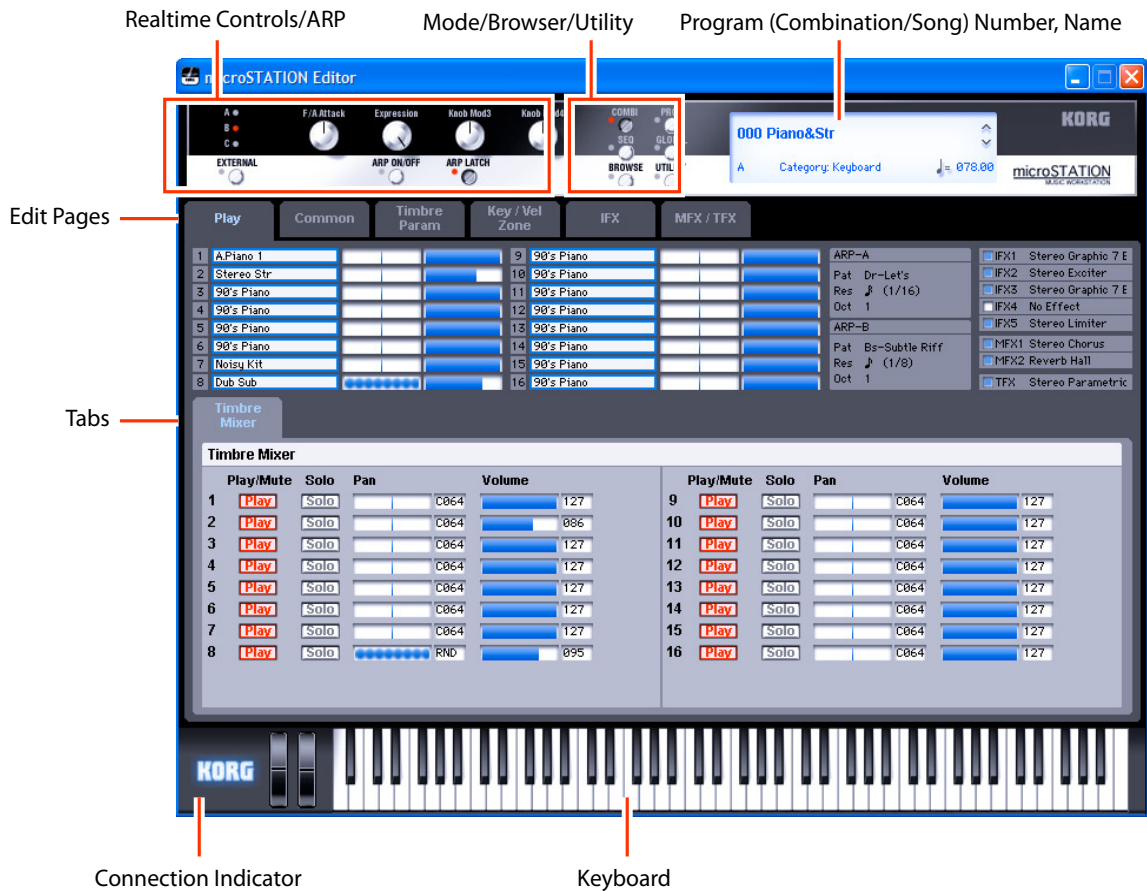
### About the Preload data

Start up the microSTATION Editor, and use the Receive All function to load all data into the microSTATION Editor. Then save this data to a file as preload data.

You can now create a setting for this data file to be automatically loaded when you start up the microSTATION Editor, the start-up time will be shortened because you won't need to load the data from the microSTATION. (☞ “Software Setup (Initial settings for the microSTATION Editor)” on page 29)

# Items on the screen

A screen like the following will appear when you start up the editor. (This illustration here shows the Combination mode screen.)



## Connection indicator (KORG logo)

This indicates the connection status between the microSTATION Editor/Plug-In Editor and the microSTATION.

### • Lit-up



The microSTATION Editor/Plug-In Editor and the microSTATION are connected via MIDI.

### • Dark



The microSTATION Editor/Plug-In Editor is not connected to the microSTATION.

## Mode (COMBI, PROG, SEQ, GLOBAL) / Browser (BROWSE) / Utility (UTILITY):

Here you can select program, combination, sequencer, or global mode. The browser will display the names of the programs, combinations, and songs that are in the microSTATION. UTILITY lets you view and select the utility commands that are available for the page that you've selected. This is where you can write (save) data.

## Program (Combination/Song) Number, Name:

This area shows the number and name of the program, combination, or song. Use the up/down arrows to the right side to change programs, combinations, or songs.

---

### **Edit Pages, Tabs:**

These are used to select the page that you want to edit.

### **Realtime Controls:**

Depending on the setting of the A/B/C or EXTERNAL switches, these controls are assigned to edit the sound or volume, the arpeggiator settings, or to control an external MIDI device.

### **ARP:**

Here you can adjust settings for the arpeggiator function.

### **Keyboard:**

This section consists of an 88-note keyboard, a pitch bend wheel, and a modulation wheel. You can click the keyboard to play notes, and even play a glissando by dragging over the keyboard to the left or right. You can use the pitch bend wheel and modulation wheel by dragging them upward or downward.

## **Operating procedure**

### **Selecting a mode**

Click the button to select the corresponding mode.

COMBI: Select, play, and edit combinations.

PROG: play, and edit programs.

SEQ: Select, play, and edit sequencer songs.

GLOBAL: Edit the software setup, global settings, MIDI settings, controller CC assignments, scale, sub-category names, drum kits, and arpeggio patterns.

### **Selecting programs, combinations, and songs**

- Click the [BROWSE] button to display the sound list, and then select a program (or combination or song). The items you can select will depend on the mode.
- Depending on whether you choose Category Select or Bank Select, the programs (or combinations) in the sound list will be arranged by category or by bank.

### **Auditioning programs, and selecting a program to edit**

- 1** Click the [PROG] mode button to enter Program mode.
- 2** Click the [BROWSE] button to view the program list.
- 3** Click any program to select it. Play the keyboard of the microSTATION and you will hear that program.
- 4** When you've decided on a program to edit, click the [OK] button to load that program.

## Editor operations

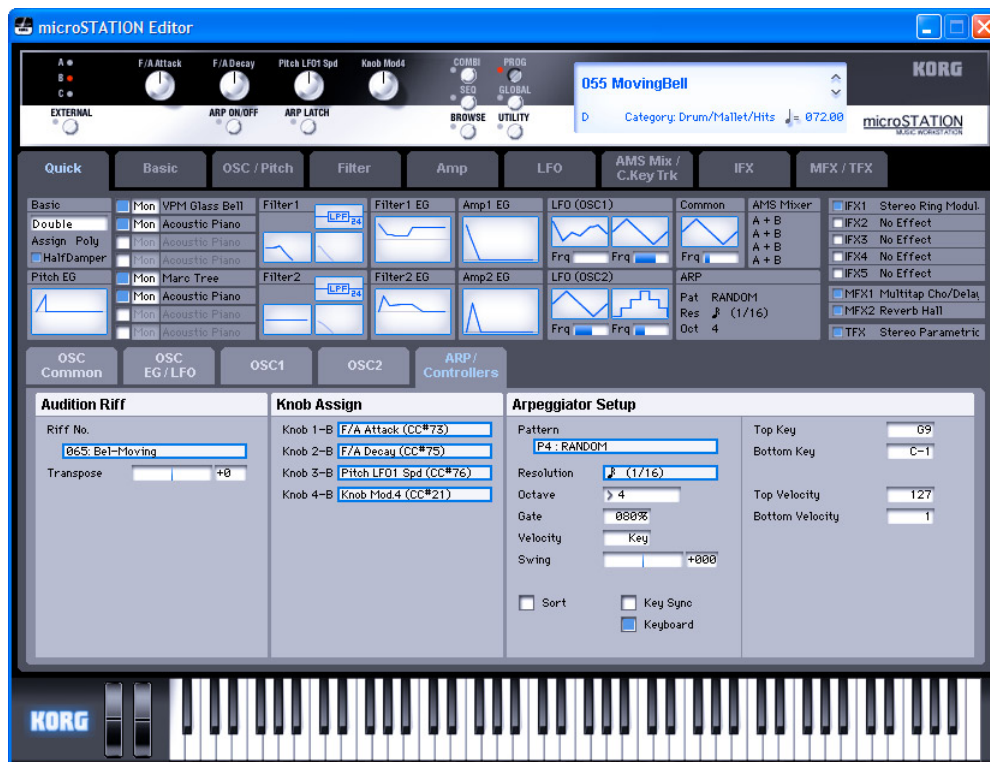
- 1 Select Program mode, and click the [Quick] tab in the Edit Pages area.  
This Quick page allows you to edit all parameters that can be edited from the microSTATION itself (the Quick parameters), except for the effect parameters. To edit the effect parameters, use the [IFX] and [MFX/TFX] tabs.
- 2 To the left side of the realtime controls located at the top of the screen, click the [A] selector. The indications of the four knobs will be [CUTOFF], [RESONANCE], [EG INTENSITY], and [EG RELEASE].
- 3 Use the four knobs of the realtime controls to vary the sound. Using the mouse to move the on-screen knobs will have the same result as turning the four knobs on the microSTATION itself. For an explanation of these parameters, please refer to the microSTATION parameter guide (PDF).



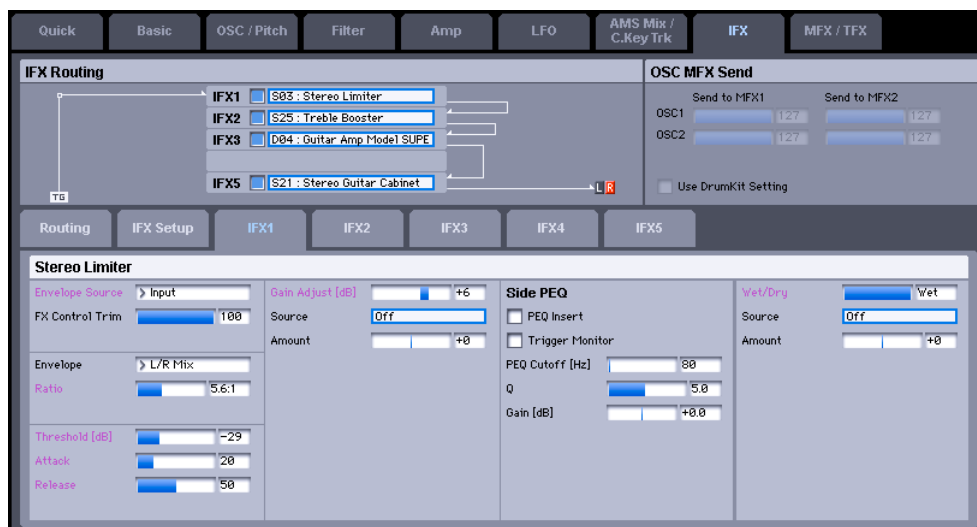
- 4 In the set of tabs located in the center of the screen, choose [ARP/Controllers].
- 5 Next, Click the [C] selector located to the left of the realtime controls so that you can control the arpeggiator.  
Now the four knobs will control the arpeggiator.



- 6 Turn on the ARP ON/OFF button and ARP LATCH button located below the Realtime controls knobs, and then play the microSTATION's keyboard; the arpeggiator will start playing. If you want to switch the pattern of the arpeggio that's currently playing, change the "Pattern" setting in the Arpeggiator Setup area in the lower part of the screen.



- 7 While letting the arpeggiator play, move the four knobs or the knobs of the microSTATION itself, and notice how the arpeggio changes.
- 8 The upper part of the Quick page shows the current values of the most important parameters for Program mode. This overview area shows the parameters organized by section. By clicking a section name (such as "Pitch EG" or "Filter1 EG") you can jump automatically to the page/tab for editing the corresponding parameters.
- 9 Edit pages other than the [Basic] tab allow you to edit all of the parameters that cannot be edited from the microSTATION itself. The [IFX] and [MFX/TFX] tab pages allow you to edit all effect parameters that cannot be edited from the microSTATION itself. Parameter names shown in purple are effect parameters that can be edited from the microSTATION itself.

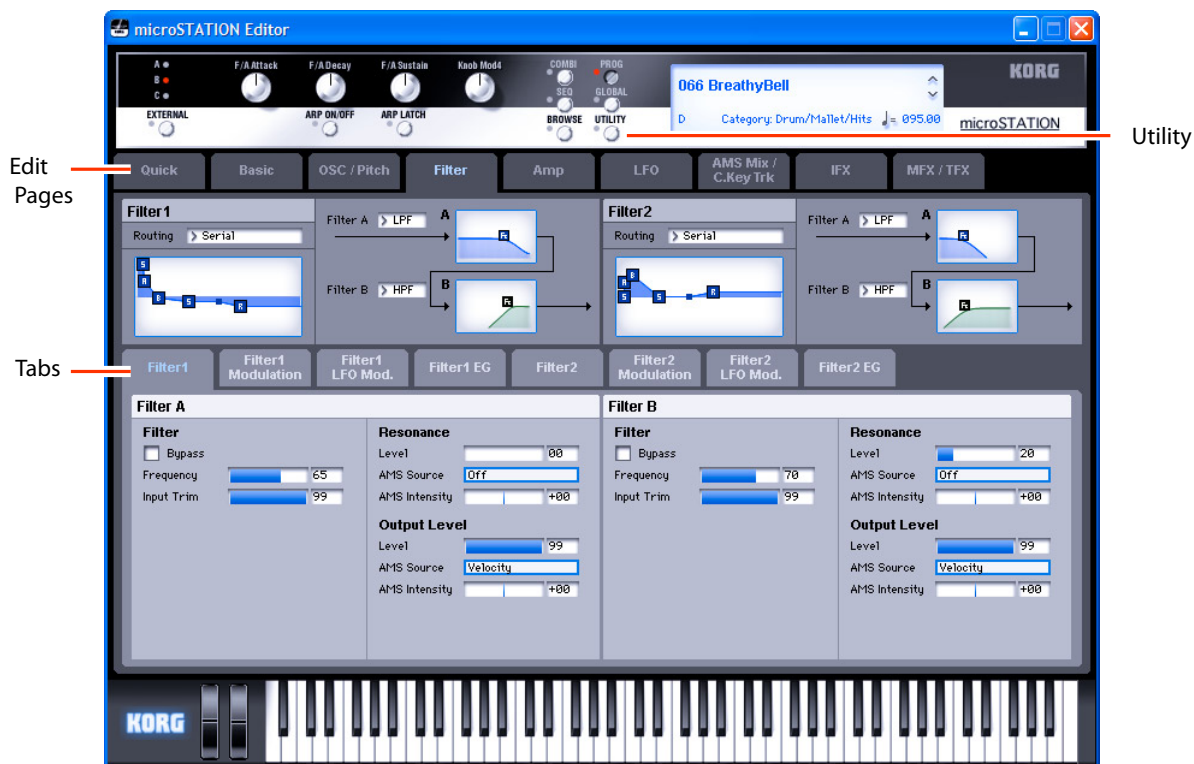


## Selecting pages and tabs

When you want to perform detailed editing, you can switch to other pages and tabs to access the desired parameters.

Global mode is divided into separate pages where you can edit drum kits, sub-category names, and scales (temperaments). Select the desired page (or tab), and proceed to edit the settings.

- To select a page, click the tab for the desired edit page.
- To move between tabs within a page, select one of the tabs located in the center of the window.



## Selecting a parameter and editing the value

- Use the mouse to edit the items in the display.  
For example you can change the shape of the EG by using the mouse to drag the rectangles shown in the EG graphic.

*Note:* For details on the parameters, please refer to the included “Parameter guide” (PDF version).

## Selecting and executing utility functions


The utility functions are various commands that are available in each page. The available utility commands will differ depending on the page. These commands also let you save or load the edited or created data on your computer, and also allow you to import system exclusive data. Click the [UTILITY] button and choose a command from the menu that appears.

*Note:* For details on utility commands that are specific to the editor, refer to “Functions provided by the microSTATION”. (p.26)

- 1 From the [UTILITY] button, choose the command that you want to use.
- 2 Adjust the necessary settings, and click OK to continue.

## Writing (saving)

If you want to keep any of the edits you have made, you must write (save) them.

 The Write operation will save the edited settings on the microSTATION.

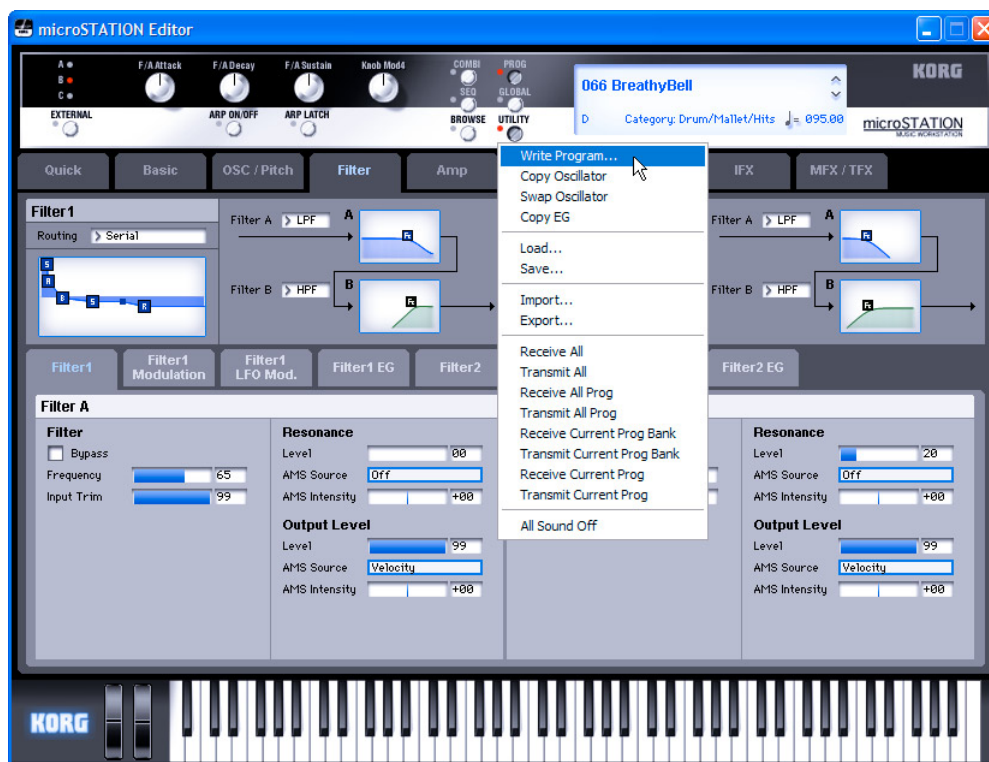
If you select another program or close the application before you execute the Write operation, the content you had been editing will be lost. The same applies to combinations or songs.

Global mode settings are maintained until you close the application, but your changes will be lost when you close the application. If you use the utility command "Write Global setting," or click the [DUMP] button located in the upper right side of each page in Global mode, the current settings will be saved in the microSTATION. (Some pages do not have the [DUMP] button.)

As an example, here's how to write a program that you've edited in Program mode.

**1** Click [UTILITY] to access the utility menu.

**2** From the menu list, choose [Write Program].



3 Specify the program name, category, and save destination, and click the [OK] button.



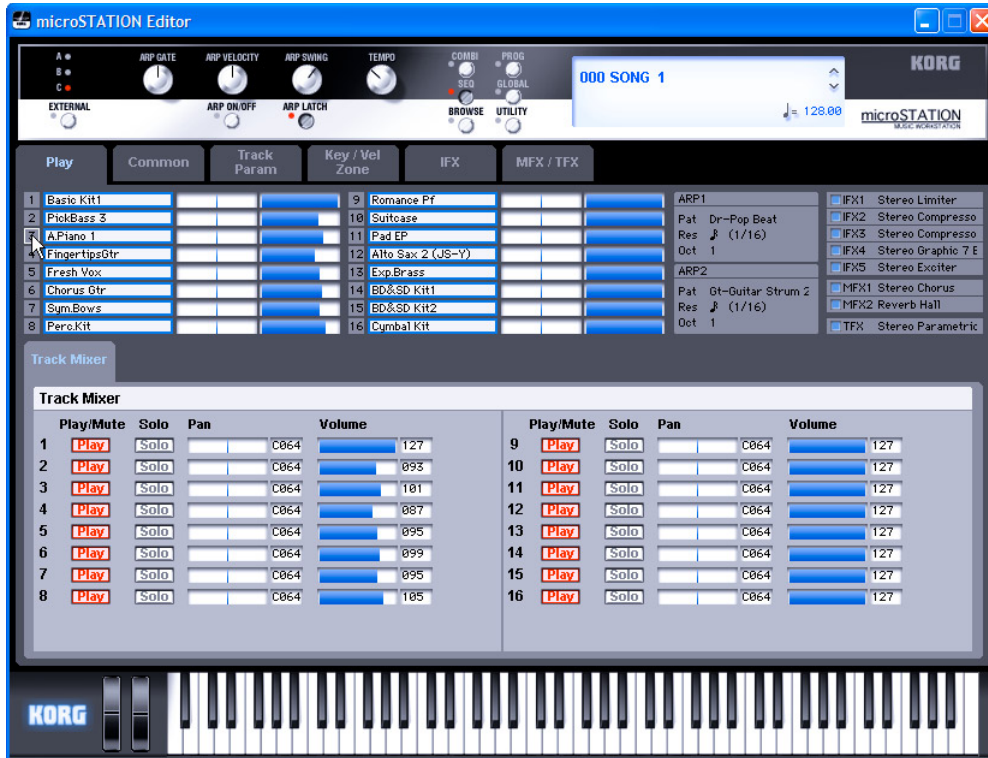
*Note:* If you use a menu command (such as Swap Oscillator) on the microSTATION itself, the data in the Editor and the data in the microSTATION may lose synchronization. In this case, use a UTILITY menu command (such as Receive Current Prog) in the Editor to receive a data dump of the current data.

## Selecting a track

You can select the current track in Sequencer mode. The current track is common to all pages of Sequencer mode.

To select a track, use your mouse to click on the number of that track. When a track is selected as the current track, a white border will appear around that track.

*Note:* There are some pages where you can't select the current track. In pages where you can select the current track, a white border is shown around the track that is chosen as the current track.



## Functions provided by the microSTATION

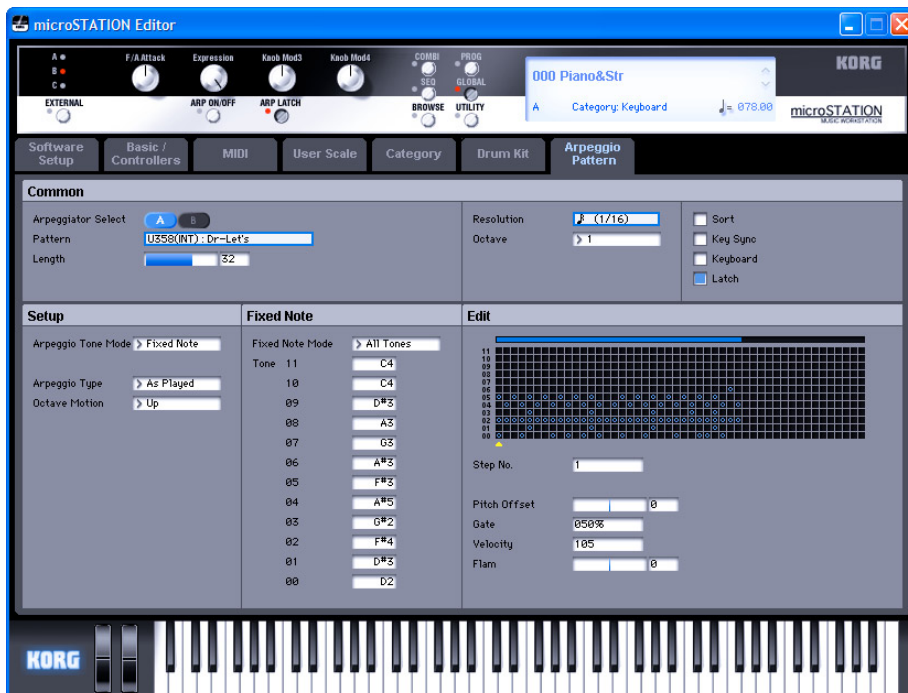
### 1 Drum kit

The Drum Kit page allows you to select the drum sample for each key, as well as visually edit numerous parameters that specify how each drum sample will be sounded.



### 2 Arpeggiator

The arpeggiator is a function that automatically produces arpeggios (broken chords). The microSTATION Editor lets you edit the parameters of the microSTATION's (maximum of) two arpeggiators in each mode (PROG, COMBI, SEQ), edit arpeggio patterns in GLOBAL mode, and also to view the settings of the four knobs in real time. The arpeggio pattern edit screen lets you edit the arpeggio pattern while you listen to the phrase.



---

# Functions specific to the editor

These are functions that are not found on the microSTATION, and are available only from the editor (microSTATION Editor/Plug-In Editor).

## Utility commands

### Load

Loads editor data that was previously saved on the computer.

### Save

Saves data from the editor to your computer as a file.

*Note:* These functions load or save the data as dedicated files for the editor application.

### Write Combination/Program/Arpeggio Patterns/Drumkit

These commands send the current data that was modified in the editor to the microSTATION itself, and writes the data into internal memory.

### Rename Arpeggio/Drum kit/External Setup

These commands rename the respective data. The edited name will be sent to the microSTATION itself.

### Reset Controller MIDI Assign

This automatically assigns the MIDI control change messages for each controller of the Global: Controllers– ARP Controllers.

For details, please see “Reset ARP CC#” on PG page 66.

### Initialize Combination

This command initializes the settings of the combination that’s currently selected.

### Copy \*\*\*/Swap \*\*\*/Remove \*\*\*

These commands provide the same functionality as in the microSTATION’s Command menu as well as functionality that’s specific to the editor. The Command menu appropriate for the data handled within each tab page will appear.

### Receive All

Receives all data from the microSTATION’s internal data into the editor.

*Note:* The sequencer performance data of Sequencer mode is excepted.

### Transmit All

Transmits all data in the editor to the microSTATION and writes it into internal memory.

### Receive All Combi/Current Combi Bank/Receive All Prog/ Current Prog Bank/Receive SEQ/Receive Global Data/ Drum Kit/Arpeggio Pattern

Receives the corresponding data from the microSTATION into the editor.

### Transmit All Combi/Current Combi Bank/Transmit All Prog/ Current Prog Bank/Transmit SEQ/Transmit Global Data/ Drum Kit/Arpeggio Pattern

Transmits the corresponding data from the editor to the microSTATION and writes it.

---


## **Receive Current Combi/Current Prog/1 SEQ/Current Arpeggio Pattern**

Receives data from the microSTATION into the editor.

## **Transmit Current Combi/Current Prog/1 SEQ/Current Arpeggio Pattern**

Transmits data from the editor to the microSTATION.

*Note:* These Receive and Transmit commands use the KORG SysEx MIDI Dump to send or receive data, or to synchronize the data between the microSTATION and the software.

 Don't touch the keyboard or the mouse of your computer while data is being sent or received. Also, don't touch the panel switches or the keyboard of the microSTATION during this process.

## **Import**

Loads PCG data from the microSTATION into the editor.

## **Export**

Data created in the microSTATION Editor can be saved as PCG data for the microSTATION.

## **Save as Default**

Writes (saves) the global mode Software Setup settings of the editor as the default settings that will be used when you start up the editor.

*Note:* These utilities can be selected only in the editor's global mode Software Setup page.

## **Select Auto Load File**

In the Software Setup tab, use "Load data file automatically" to select the desired file.

*Note:* Refer to "Load data file automatically".

## **All Sound Off**

Depending on the host application, "hung" notes may occur while using the host's functions. If this happens, please use the "All Sound Off" command.

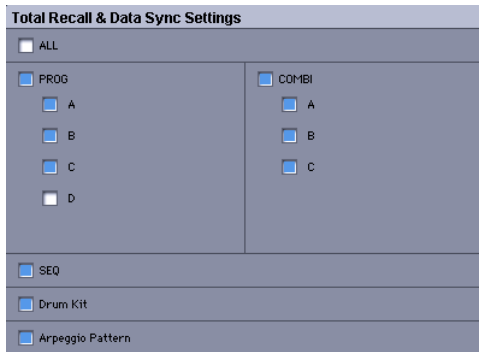


---

## Software Setup (Initial settings for the microSTATION Editor)

Global mode Software Setup lets you specify the default settings that the microSTATION Editor will use when it starts up. This setting is saved when you use the UTILITY command Save as Default, and will be remembered the next time you start up.

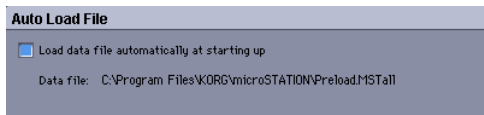
### Total Recall & Data Sync Settings



Here you can specify the editor data that will be saved and loaded as part of the song data by your DAW software. This setting lets you save only the data that you need. When the microSTATION Editor starts up, the types of data that you've checked here will also be loaded automatically from the microSTATION that's connected to your computer. (In other words, this data will be synchronized.)

Since a data dump requires a certain amount of time, you may wish to shorten the startup time by using the Load Data File Automatically function instead of this function, or by using the UTILITY command Load to load a previously-saved data file into the microSTATION Editor.

### Load data file automatically



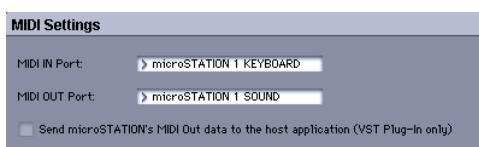
When the microSTATION Editor starts up, the data file that you specify here will automatically be loaded into the editor. After this process is completed, the data that you checked in Total Recall & Data Sync Setting will be loaded via data dump.

### Auto Local Control



This setting automatically sets the microSTATION's Local Control setting to the appropriate state when you start up the editor. We recommend that you normally leave this parameter on. The microSTATION's Local Control setting will be reset to its original state when you close the editor.

### MIDI Settings



Here you can adjust settings for MIDI connections between the microSTATION Editor and the microSTATION.

---

### **MIDI IN Port / MIDI OUT Port**

This selects the connection port for the microSTATION and the microSTATION Editor. The name of the MIDI port that's currently connected is shown. You won't need to change this setting if the microSTATION and the microSTATION Editor are connected correctly, since the microSTATION Editor will search for the microSTATION when it starts up, and will specify the MIDI port automatically.

### **Send microSTATION's MIDI Out data to the host application (VST Plug-In Only)**

If you turn this option on, the MIDI OUT data of the microSTATION itself will be sent to the host application as the output of the plug-in instrument.

Short messages are the only type of MIDI messages that can be output. If you're using a host application that is able to receive the MIDI data sent by a plug-in instrument, the MIDI messages generated by the microSTATION's arpeggiator function can be sent to the MIDI track of a different software synthesizer.

---

# Cautions

## USB connection

### **If you lose data synchronization with the microSTATION when starting up the editor, please check the following points.**

- If you're using USB-MIDI, you must use the KORG USB-MIDI Driver. The default driver provided by the operating system may have an extremely slow data transfer rate, or may not communicate correctly.
- If you're using a USB hub, try connecting the microSTATION directly to a USB port on the computer itself to see whether it will work. You can also try removing all other connected USB devices except for the microSTATION.  
When you lose data synchronization, please perform the "Receive All" or "Transmit All" function in the Editor's "UTILITY" menu in order to synchronize the data between the editor and the hardware.

### **About the USB port where you connect the microSTATION (Windows only)**

- The microSTATION's USB port is USB 1.1, but if the USB port of your computer itself supports USB 2.0, you may be able to increase the USB data transmission rate depending on how you make connections.  
In some cases, connecting the microSTATION directly to a USB port of the computer itself may slow down the data transfer speed. If so, connect the microSTATION via a USB 2.0 hub rather than directly to the computer. This may increase the USB data transfer speed.

### **IMPORTANT NOTICE TO CONSUMERS**

This product has been manufactured according to strict specifications and voltage requirements that are applicable in the country in which it is intended that this product should be used. If you have purchased this product via the internet, through mail order, and/or via a telephone sale, you must verify that this product is intended to be used in the country in which you reside.

**WARNING:** Use of this product in any country other than that for which it is intended could be dangerous and could invalidate the manufacturer's or distributor's warranty.

Please also retain your receipt as proof of purchase otherwise your product may be disqualified from the manufacturer's or distributor's warranty.

**KORG** KORG INC.

4015-2 Yanokuchi, Inagi-city, Tokyo 206-0812 Japan