

Bluetooth MIDI Connection Guide

Contents

Connections with an iPhone/iPad.....	2
Operating requirements	2
In the case of an app that supports Bluetooth MIDI	2
If the app does not support Bluetooth MIDI	4
Connections with a Mac.....	5
Operating requirements	5
In the case of OS X El Capitan or later	5
In the case of OS X Yosemite.....	6
Connections with Windows.....	7
Operating requirements	7
Installation procedure	7
Connections	7
Note	8

- Apple, iPad, iPhone, Mac, iOS and OS X are trademarks of Apple Inc., registered in the U.S. and other countries.
- Windows is a trademark of Microsoft Corporation in the U.S. and other countries.
- Bluetooth is a registered trademark of Bluetooth SIG, Inc.
- All product names and company names are the trademarks or registered trademarks of their respective owners.

Bluetooth MIDI Connection Guide

This document explains how to use a Bluetooth MIDI device via a wireless connection.

TIP The contents and operation may differ depending on your operating system or the version of your app. For the latest information and more detailed information, refer to the Korg website (www.korg.com) or the KORG app Help Center (<https://support.korguser.net/hc/>).

Connections with an iPhone/iPad

Operating requirements

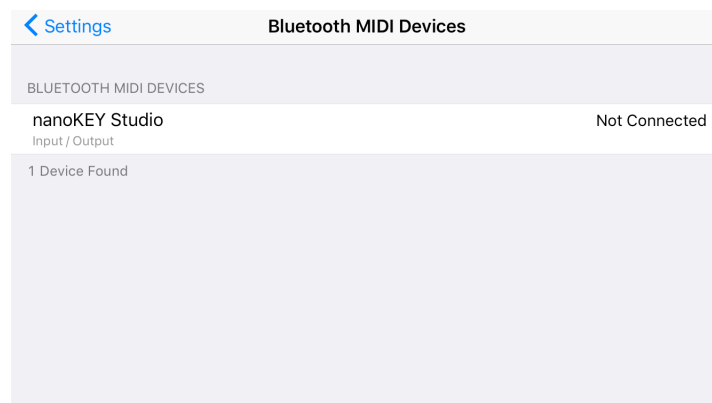
iPhone/iPad that supports Bluetooth 4.0 and has iOS 8 or later installed

In the case of an app that supports Bluetooth MIDI

In the app, open the Bluetooth MIDI settings, and in the list that appears, tap the Bluetooth MIDI device that you want to use; the connection will be established. For details on how to open Bluetooth MIDI settings, refer to the manual for your app.



This connection operation is required each time you use a Bluetooth MIDI device.



Opening the Bluetooth MIDI settings for your app

KORG Gadget

In the upper right of the screen, tap the gear icon to open settings; then in “Bluetooth MIDI,” tap Settings to open Bluetooth MIDI device settings.



KORG Module

In the upper right of the screen, tap the gear icon to open settings; then in “Bluetooth MIDI,” tap Scan to open Bluetooth MIDI device settings.



Apple GarageBand

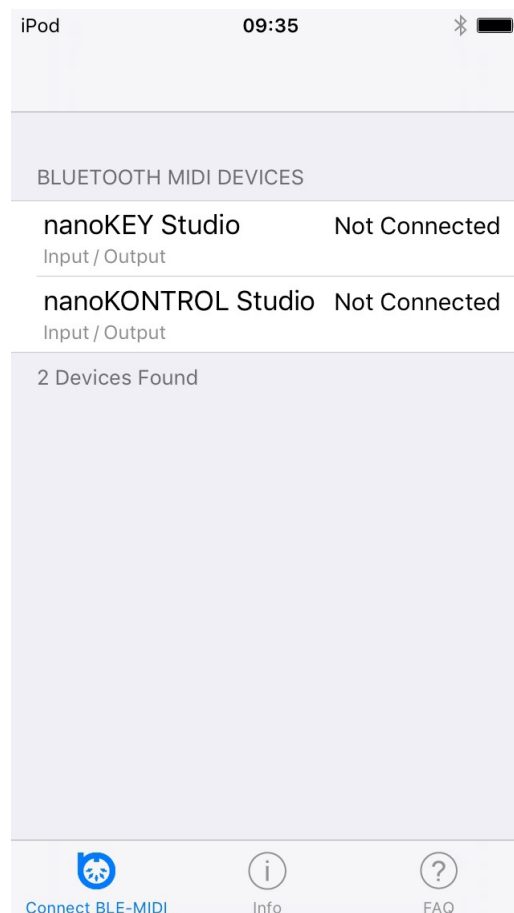
In the upper right of the screen, tap the settings icon to open settings; then open “Advanced”. When you turn on “Run in Background,” the “Bluetooth MIDI Devices” item appears. Tap “Bluetooth MIDI devices” to open Bluetooth MIDI device settings.


If the app does not support Bluetooth MIDI

In the App Store, search for “Bluetooth MIDI Connect”, and install it.



Start Bluetooth MIDI Connect, and in the list that appears, tap the Bluetooth MIDI device that you want to use; the connection will be established. When the connection is established, you'll also be able to use the MIDI port of the Bluetooth MIDI device from an app that supports Core MIDI.



 This connection operation is required each time you use a Bluetooth MIDI device.

Connections with a Mac

Operating requirements

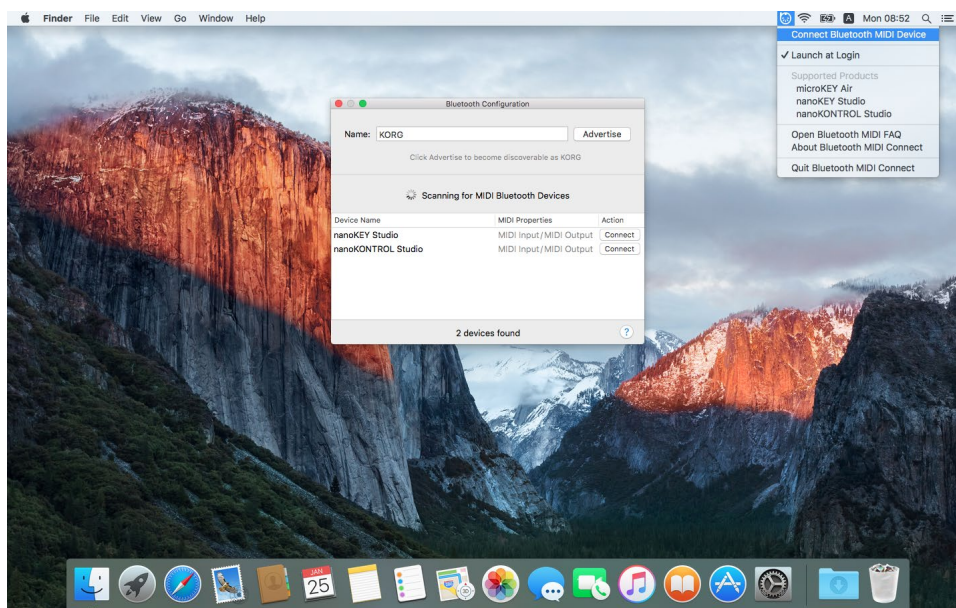
Mac that supports Bluetooth 4.0 and has OS X Yosemite 10.10 or later installed

In the case of OS X El Capitan or later

In the Mac App Store, search for "Bluetooth MIDI Connect," and install it.



When you start Bluetooth MIDI Connect, the Bluetooth MIDI Connect icon is shown in the menu bar. From this menu, choose "Connect Bluetooth MIDI Device"; the Bluetooth Configuration window appears. Click the "Connect" button of the Bluetooth MIDI device in the list shown in the window; now you can use the MIDI ports of the selected Bluetooth MIDI Device. In the settings of the application that you're using, select the MIDI IN and MIDI OUT ports.



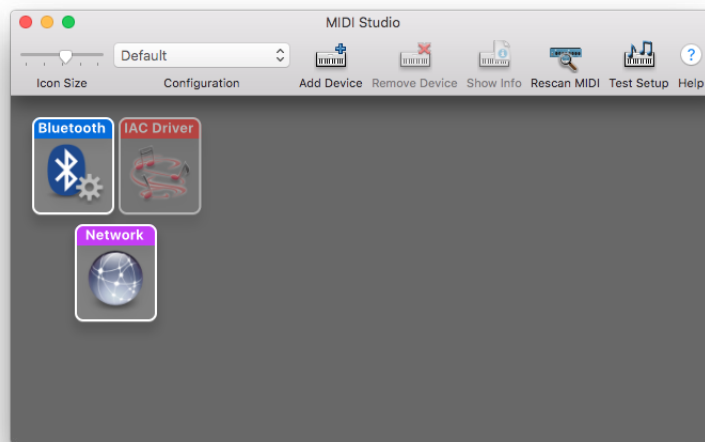
TIP If Bluetooth MIDI Connect is running, a notification appears when a Bluetooth MIDI device is found. You can open the Bluetooth connections window by clicking this notification.



This connection operation is required each time you use a Bluetooth MIDI device.

In the case of OS X Yosemite

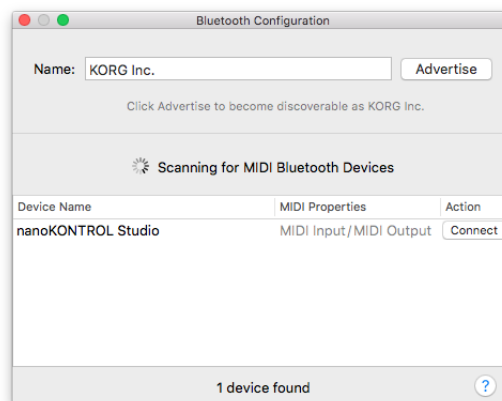
Start “Applications”-“Utilities”-“Audio MIDI Settings,” and from the MIDI, choose “Window”-“Show MIDI Studio” to open the MIDI studio window.




Double-click the Bluetooth icon to open the Bluetooth Configuration window.

Click the “Connect” button of the Bluetooth MIDI device in the list shown in the window; now you can use the MIDI ports of the selected Bluetooth MIDI Device.

In the settings of the application that you're using, select the MIDI IN and MIDI OUT ports.



 This connection operation is required each time you use a Bluetooth MIDI device.

Connections with Windows

Operating requirements

PC that has Windows 8.1 or later installed and is equipped with Bluetooth 4.0, or a computer with a connected USB adapter that supports Bluetooth 4.0 Smart

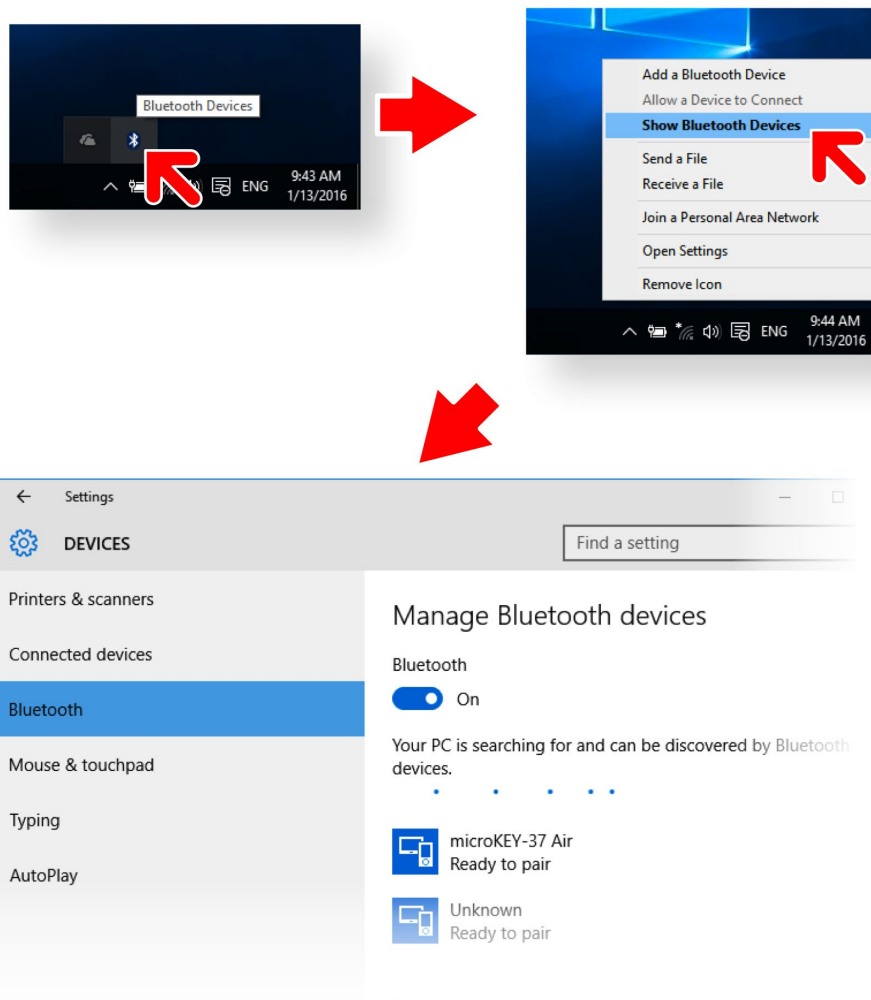
Installation procedure

From the Korg website (www.korg.com), download the KORG BLE-MIDI Driver and install it as described in accompanying manual.

Connections

First you must connect Windows with the Bluetooth MIDI device. This operation is called “pairing.”

Turn on the power of the Bluetooth MIDI device, and enable its wireless functionality. Click the Bluetooth icon in the task tray, and choose “Show Bluetooth Devices.”



In the Bluetooth device management screen, choose a device indicated as “Ready to pair” and click “Pair.” When the indication shows “Connected,” pairing is completed, and the Bluetooth MIDI Device is ready to use.

Start your MIDI application, and select the MIDI IN port and MIDI OUT port as necessary.

Note

- Connections with a Bluetooth MIDI device are made using the Bluetooth functionality that is built into Windows.
- Connections via dedicated software included with the Bluetooth device are not supported.
- This cannot be used by multiple MIDI applications simultaneously.
- If the Bluetooth MIDI device is not connected even when you start the MIDI application, delete the Bluetooth MIDI device in the Bluetooth device management screen, and then pair the device once again.

KORG INC.

4015-2 Yanokuchi, Inagi-City, Tokyo 206-0812 JAPAN

© 2016 KORG INC.