

KORG prologue Sound Librarian

Owner's Manual

Table of Contents

Introduction	2
What is the prologue Sound Librarian?	2
Caution	2
Operating requirements	2
Installation	3
Installation for Mac users	3
Installation for Windows users	3
Quick start	4
Starting the prologue Sound Librarian	4
prologue Sound Librarian screens and functions	5
Main screen of the prologue Sound Librarian	5
Program List	6
Custom Oscillator and Effects List	7
Preset Data	8
Preference settings	9
MIDI ports	9
Misc.	9
File type	10
Menu	11
File	11
Edit	11
Send/Recv	12
Option	12
Troubleshooting	13
Software won't start up	13
Can't transfer data	13

Apple, Mac and Mac logo are trademarks of Apple Inc., registered in the U.S. and other countries.

Windows 7, Windows 8.1 and Windows 10 are trademarks of Microsoft Corporation in the US and other countries.

All product names and company names are the trademarks or registered trademarks of their respective owners.

Specifications and appearance are subject to change without notice for improvement.

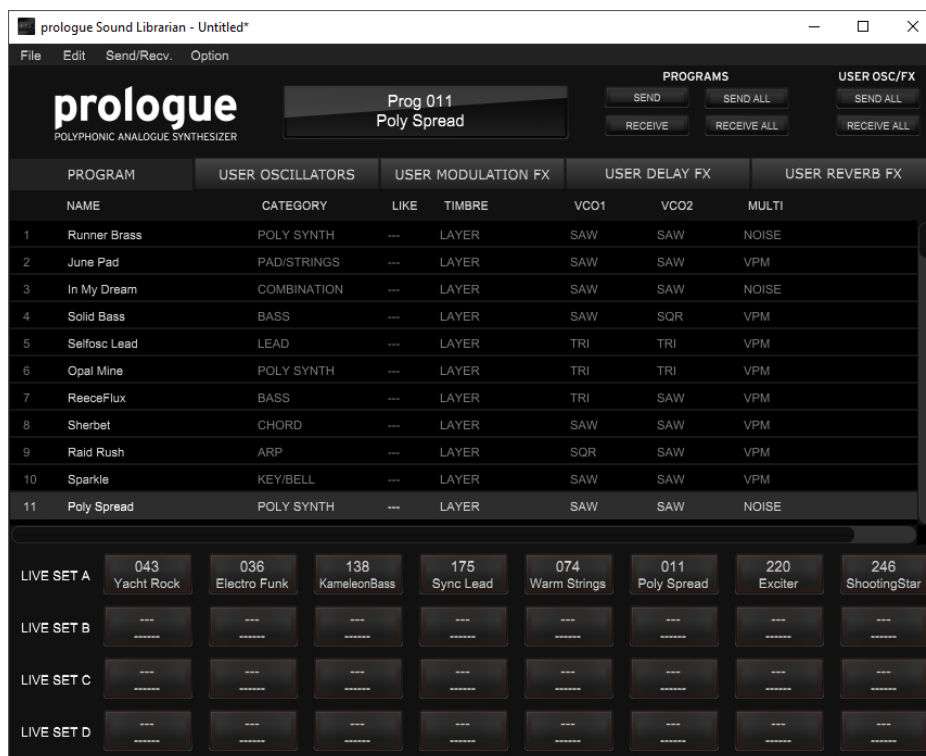
Introduction

Thank you for purchasing the Korg prologue synthesizer.

To help you get the most out of your new instrument, please read this manual carefully.

What is the prologue Sound Librarian?

The prologue Sound Librarian lets you easily sort through the prologue programs, save them on your computer, and manage user oscillators and effects on your prologue.



Caution

- ⚠ Do not disconnect your prologue or power off the unit while the Sound Librarian is running.
- ⚠ Do not edit any global parameters on the prologue while the Sound Librarian is running.
- ⚠ Do not operate your prologue or the Sound Librarian while any data is being transmitted.

Operating requirements

A computer that satisfies OS requirements and a USB cable are necessary to use the prologue Sound Librarian.

Mac

Operating system: Mac OS X 10.10 or later.

Windows

Operating system: Windows 7 SP1 (32bit, 64bit) or later.

⚠ Operation with touch panel is not supported when running Windows 8. 1 or Windows 10.

⚠ Full functionality is not guaranteed with all computers that satisfy these system requirements.

Installation

In order to use the prologue Sound Librarian, you must also download the KORG USB MIDI Driver from the Korg website and install it as described in the accompanying documentation. (<http://www.korg.com/>)

Installation for Mac users

Proceed as follows to install the software on a Mac.

1. Copy the “prologue Sound Librarian” folder to the “Applications” folder.

Installation for Windows users

Proceed as follows to install the software in Windows.

1. Double click “prologue Sound Librarian Installer****.exe” (**** denotes version) to start the installation process.
2. The prologue Sound Librarian installer will start up. Follow the on screen instructions to install the software.

Quick Start

Starting the prologue Sound Librarian

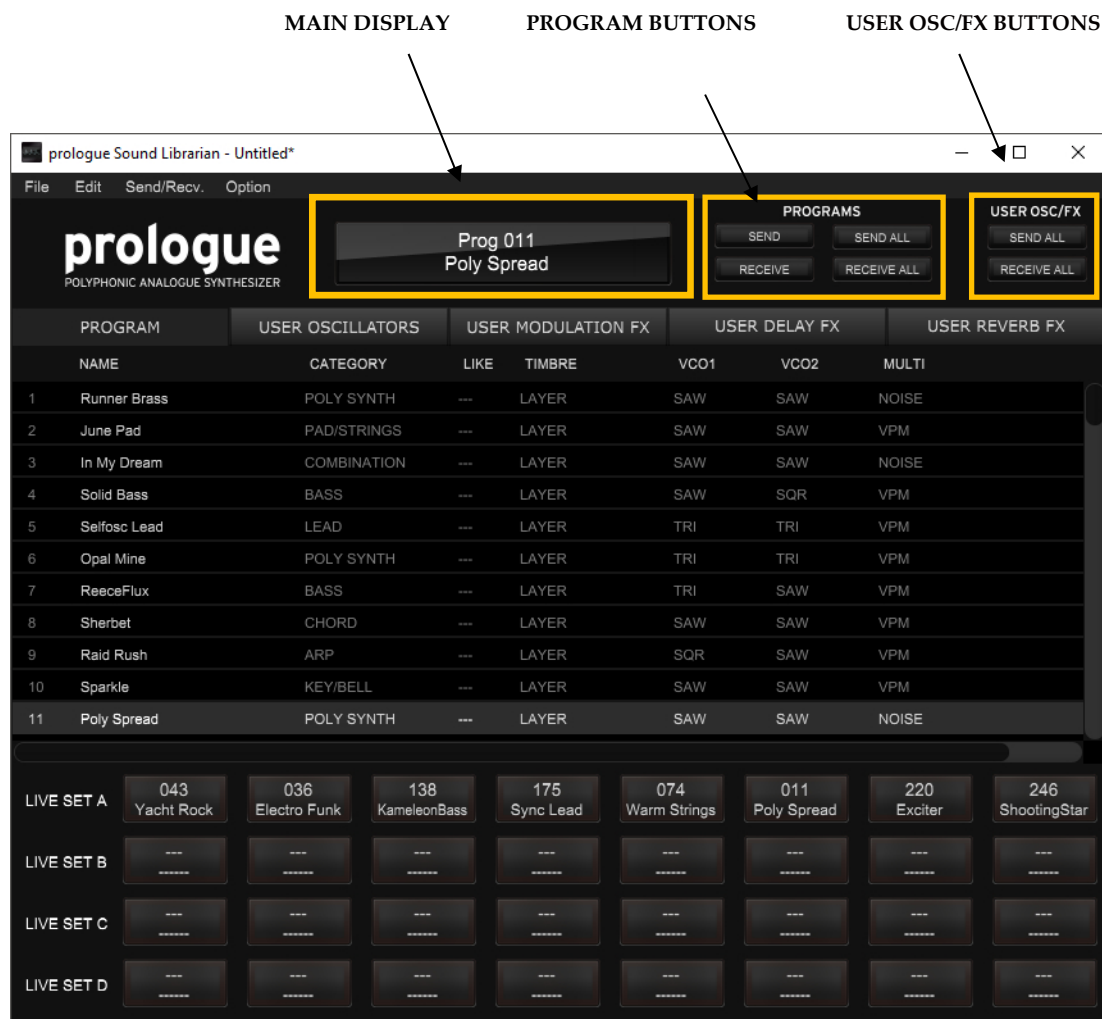
1. Use a USB cable to connect your prologue to your computer.
2. Start the prologue Sound Librarian.
Mac: "Applications" → "prologue" → "prologue Sound Librarian"
Windows 7: "Start" → "All Programs" → "KORG" → "prologue" →
"prologue Sound Librarian" in the taskbar.
Windows 8.1: Home screen "prologue Sound Librarian"
Windows 10: "Start Menu" → "All Programs" → "KORG" → "prologue" →
"prologue Sound Librarian" in the taskbar.
3. The prologue Sound Librarian screen will appear. Program data and user oscillator and effects data will be automatically loaded from the prologue.

prologue Sound Librarian Screens and Functions

This section provides a brief explanation of the prologue Sound Librarian's screens and their functions.

Main screen of the prologue Sound Librarian

This is the screen that is displayed when starting up the prologue Sound Librarian.



Main display

This shows the program names that you selected.

Program buttons

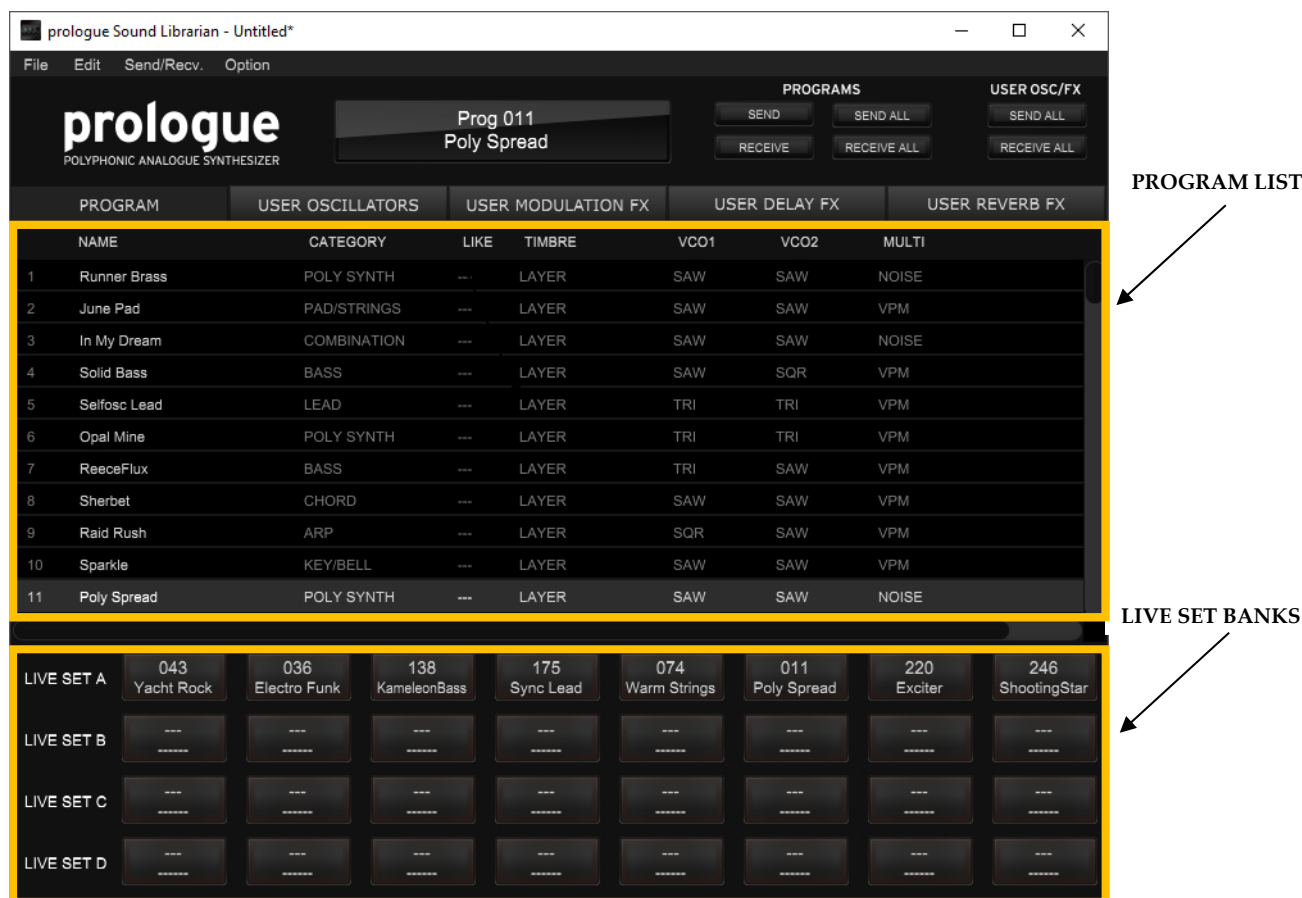
These buttons allow to send and receive either the currently selected program, or all programs.

User osc/fx buttons

These buttons allow to send and receive user oscillator and effects data.

Program List and Live Set Banks

This screen is used for sorting and editing programs and their names. You can also manage which programs are loaded into the four live set banks of your prologue.



Selecting programs

Click on a program in the program list to select it.

If you select a program, the selected program will be transferred to the prologue and the sound can be checked.

Tip Click and select multiple items in the program list by holding down the command key in Mac or the Ctrl key in Windows.

Sorting programs

Drag and drop items in the program list to change the order of the list.

Tip You can also select several items and sort them at once.

Copying programs

To copy the programs, drag and drop while holding down the Option key on a Mac or the Ctrl key in Windows.

Tip You can also select several items and copy them at once.

Changing program names

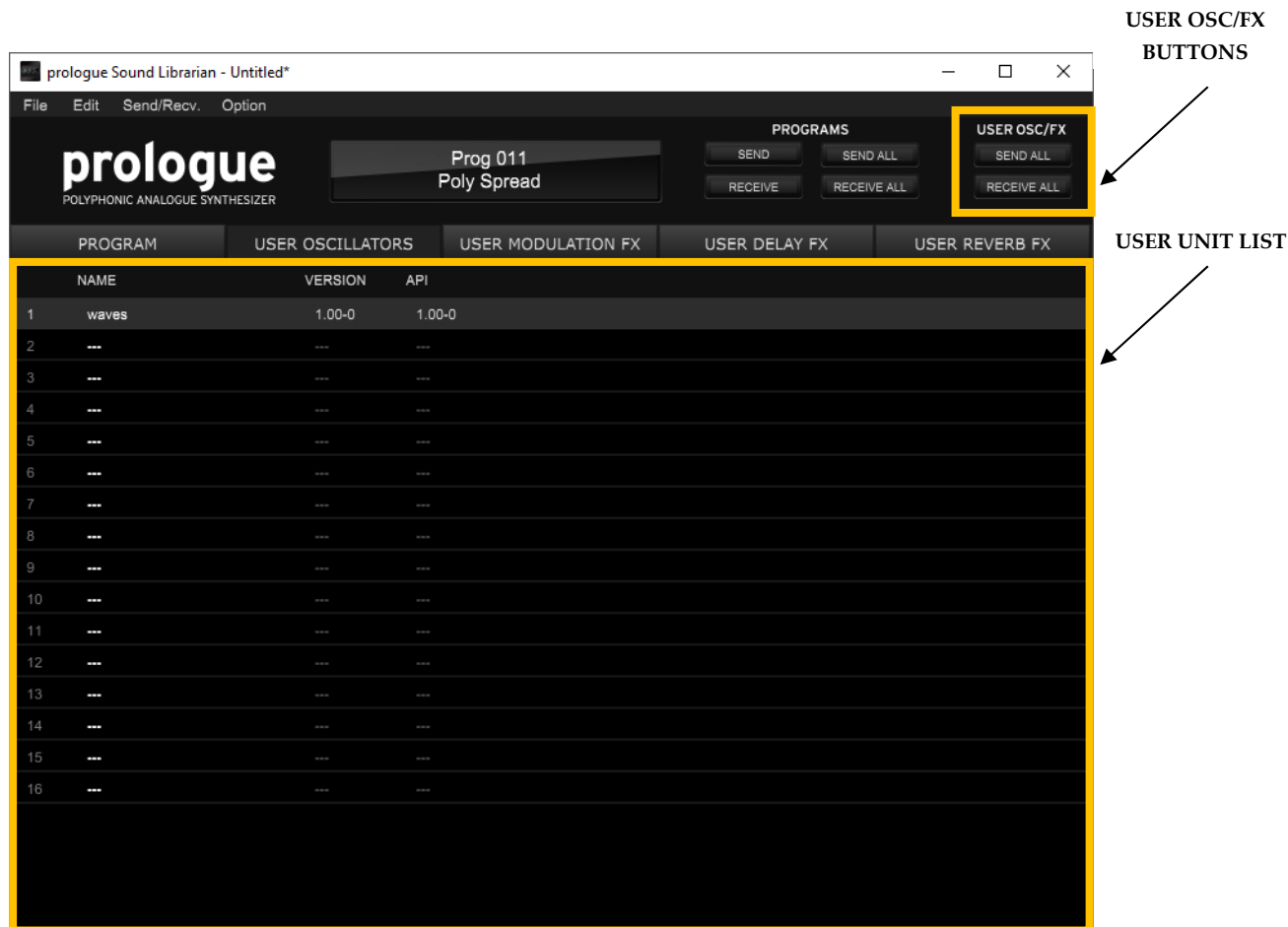
Double click on a program name to edit.

Loading a program into a live set slot

Drag and drop a program from the program list onto one of the slot buttons in the live set banks section. Double click a live set slot button to clear it.

User Oscillator and Effects Lists

There are four user lists, one for user oscillators and for each type of effect. These screens are used for sorting and loading custom user oscillators and effects built with the prologue SDK (see “prologue SDK” at <http://korg.com/prologue>). The term “user unit” is used as a shorthand to refer to user oscillators and effects.



Adding User Units

Drag a user unit file (.prlgunit) into the user unit list corresponding to its type (oscillator, modulation effect, delay effect, or reverb effect), and drop it over the desired row.

Sorting User Units

Drag and drop items in the user unit lists to change their order.

Tip You can also select several items and sort them at once.

Loading User Units to the prologue

To update the user oscillators and effects on the prologue, press the SEND ALL button in the user osc/fx buttons section. Once the data transfer is over, the prologue will reflect the state of the user unit lists.

Preset Data

Preset data is a collection of programs, such as factory presets, provided by KORG.
Choose "Option" from the "Open Preset Window..." menu to access the preset data window.



Listen to the presets

Select a program in the preset data window to audition the sound on your prologue.

Adding programs to the Program List

Drag and drop individual programs from the Preset Data window to add them to the program list.

Install additional preset data

Launch the sound librarian by dragging and dropping the preset data file (****.prlgpreset) on the Sound Librarian application icon.

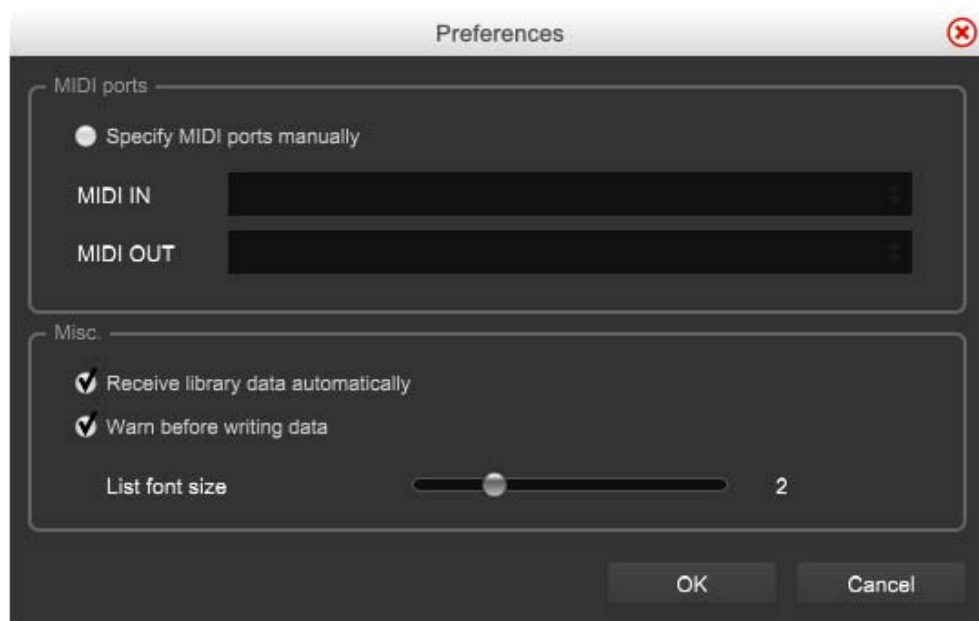
Tip You can also install preset data via "Import preset file" in the "File" menu.

Removing preset data from the preset data window

Click "uninstall all presets and quit" under "options" to uninstall all additional preset data that have been installed.

Preference Settings

Choose “Option” from the “Preferences...” menu to access the Preferences dialog box.



MIDI ports

Specify MIDI ports manually

Normally the prologue that's connected will be detected automatically. Turn this feature on if you want to specify the MIDI ports manually. Use this when several monologues are connected to the computer. If this setting is on, specify the ports where your monologue's MIDI IN/OUT controller is connected.

MIDI IN

Specify the MIDI IN port where your prologue is connected.

Tip Usually this will be the “KBD/KNOB” port in the prologue.

MIDI OUT

Specify the MIDI OUT port where your prologue is connected.

Tip Usually this will be the “SOUND” port in the prologue.

Misc.

Receive all data automatically

If this setting is on, data will be automatically loaded from your prologue when starting up the prologue Sound Librarian. If this setting is off, data will not be automatically loaded.

Warn before writing data

If this setting is on, a warning dialog box will appear before writing data to your prologue. If this setting is off, data will be written without the appearance of a warning dialog box.

List font size

This sets the character font size in the program list and the preset window.

File Type

The following files are handled in the monologue Sound Librarian.

Type	Content	Extension
Library data	A set of 500 programs and live set bank data	prlglib
Program data	Individual program data	prlgprog
User unit data	User oscillator or effect.	prlgunit
Preset data	Preset collections provided by KORG	prlgpreset

Menu

File

New

Creates a new library data file.

Open

Loads a library data file.

Save

Saves the edited library data by overwriting the existing library data file.

Save As

Saves the edited library data as a new file with the name you specify.

Load Single Program

Loads a program data file into the selected program in the program list.

Save Single Program

Saves the selected program in the program list as a program data file with the name you specify.

Import Preset File

Imports a preset file. The content will be available via the preset window..

Edit

Undo

Returns to the state prior to the previous operation.

Redo

Returns to the state prior to executing the "Undo" command.

Cut

Cuts the selected program.

Copy

Copies the selected program.

Paste

Pastes the cut or copied program to the selected program.

Clear

Clears the selected program.

Send/Recv.

Receive Library Data

Receives all programs and live set banks from the prologue.

Send Library Data

Sends all programs and live set banks to the prologue.

Receive Program Data

Receive the selected program in the prologue to the prologue Sound Librarian's program list.

Send Program Data

Sends the selected program in the prologue Sound Librarian's program list to the prologue.

Receive User Data

Receives all user oscillators and effects from the prologue.

Send User Data

Sends all user oscillators and effects to the prologue.

Option

Open Preset Window

Opens the preset window.

Preferences

Displays the Preferences dialog box.

About

Displays the software version of the prologue Sound Librarian.

Uninstall all presets and quit

Uninstalls all Preset Data and quits the Sound Librarian.

Troubleshooting

Software won't start up

Make sure that your computer meets the operating requirements.

Check whether other applications might be running.

If other applications are running, the prologue Sound Librarian might be unable to start up, or might be unable to transfer data.

Can't transfer data

Make sure that the prologue has been detected by the connected computer.

Windows 7/8.1/10: go to the Control Panel, open "Hardware and Sounds" → "Device Manager," and check the "Sound, Video, and Game Controllers" tab.

Mac OS: open "Applications" → "Utilities," then start "Audio MIDI Setup" open and check the "MIDI Studio" window by selecting "Show MIDI Window" from the "Window" menu.

Make sure that the latest Korg USB MIDI driver is installed.

You can download the latest Korg USB MIDI driver from the Korg website. (<http://www.korg.com/>)

If you're specifying the MIDI ports manually, make sure that the MIDI port settings are correct.

Make sure that the prologue is connected directly to your computer without a USB hub.