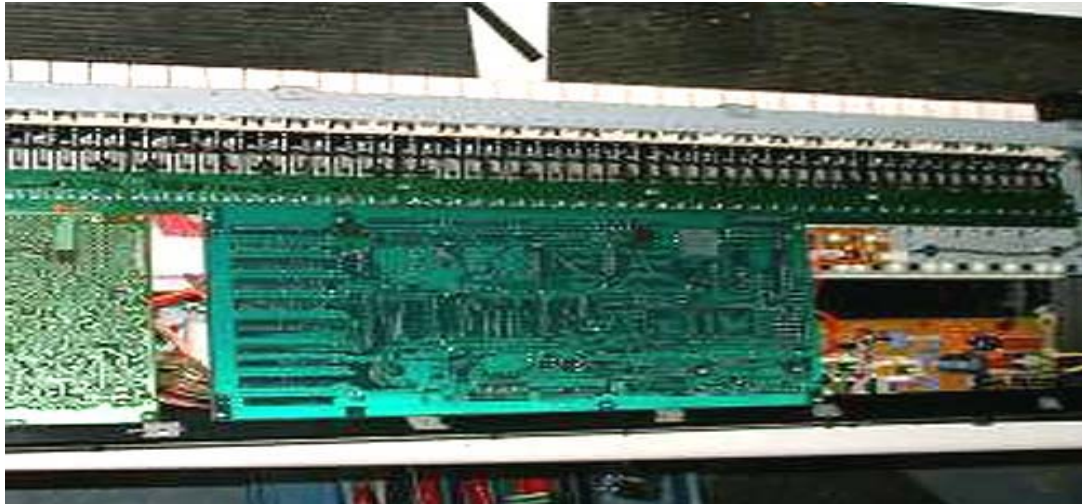
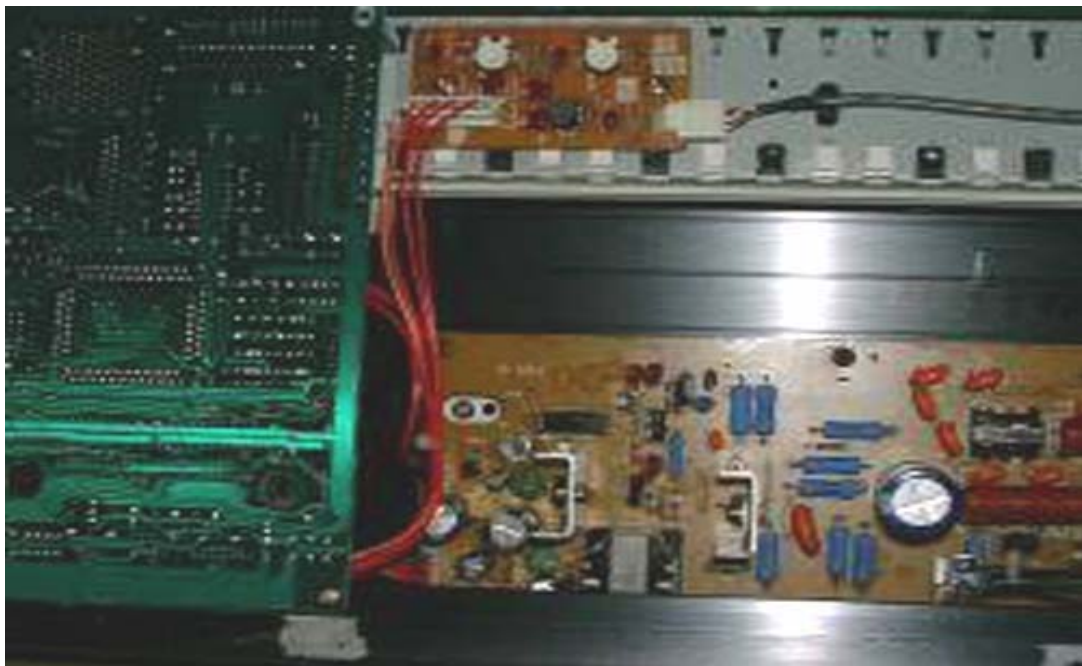


NOTE: The following instructions will assume that you have the keyboard upside down with the keys furthest from you. Be careful to support the joystick so that no weight is applied to the joystick mechanism.

1. After first disconnecting the unit from the mains supply you can remove the base panel of the M1 by releasing the black or gold screws underneath.
2. Once the base panel is removed you will see the underside of two PCB boards. The larger of the two boards is the main processor board and it is on this board that the battery can be found, albeit at present hidden from view.



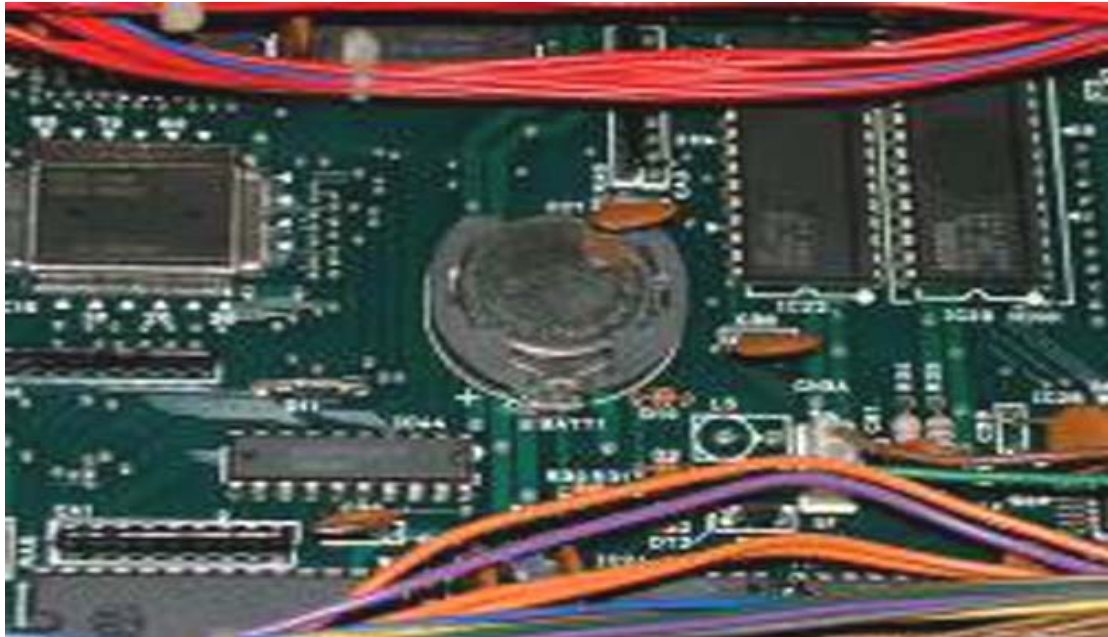
3. You will see two cables emanating from the right hand edge of this board. One of these will run to a connector just below the key frame, which is in turn attached to a small PCB board. Remove this connector.



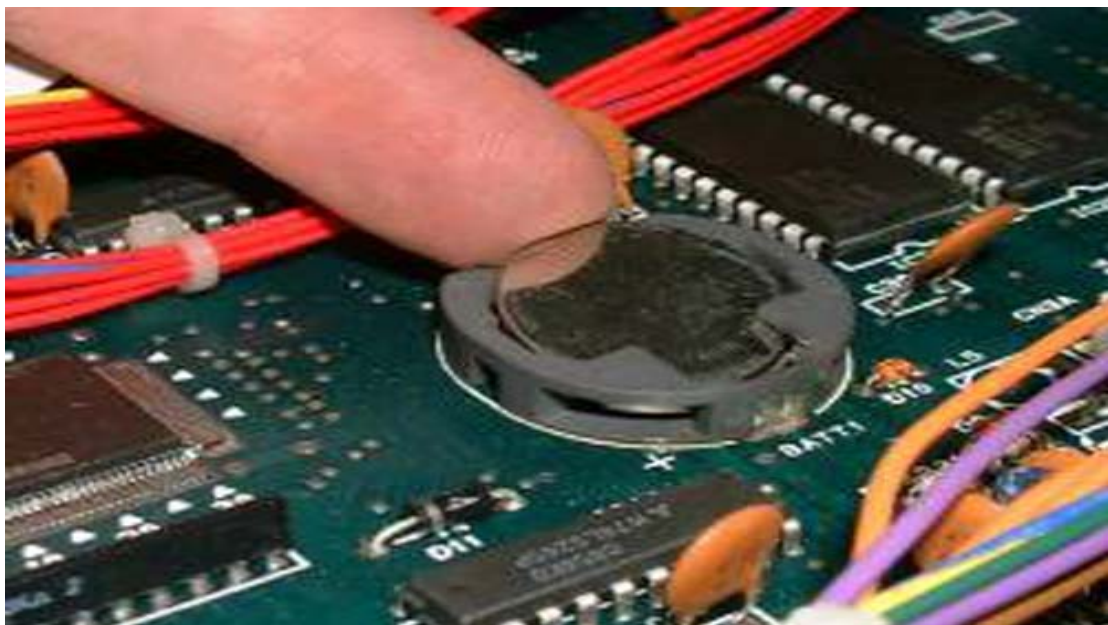
4. The other cable will run to the power supply board. This you will find adjacent to the mains input. Only remove the cable furthest from you on the power supply board.

5. Once these (see 4) have been removed you can then remove the six gold screws around the perimeter of the main board and the two larger screws positioned below the card slot.

6. You should now be able to pivot the main board so that it rest on top of the smaller board to it's left. At this point you should be able to see the battery in its horseshoe shaped holder.



7. To remove the battery push it carefully towards the back of the holder at which point the battery should come lift out quite easily.



8. Reverse the previous steps making sure that the connectors are positioned correctly and securely

9. Once you have done this you will need to reload the sounds. See the owners' manual for details.

10. The Sysex preload file is also attached. This file needs to be loaded by either a software sequencer that can transmit sysex files or by using midiox available from www.midiox.com

For more advice on how to do this, please call our support help line during the opening times.

Please note, that whilst these instructions are there to help, Korg UK cannot be held responsible for any work you chose to undertake. If you are in any doubt please return the goods to us here and we can do the necessary work.