

### New features in software version 3.0.3

KRONOS software version 3.0.3 adds a number of new features, including the support for the KRONOS Editor and Plug-in Editor 3 software, the ability to automatically remap factory Program references in sound files created for the original KRONOS and KRONOS X, and Slot transposition display in Set List mode.

In addition to these new features, the update includes various improvements and resolutions to specific operational issues.

If you're using an older version, you can download the latest software free of charge from the Korg website (<https://shop.korg.com/kronos/Support>). We recommend that all KRONOS, KRONOS X, and new KRONOS users update to version 3.0.3. This update may be installed on any KRONOS, regardless of the currently installed system version; it is not necessary to install intermediate upgrades first.

#### KRONOS Editor and Plug-In Editor 3

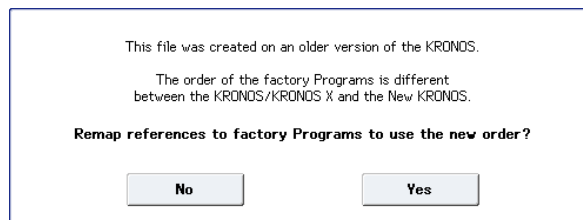
Version 3.0.3 adds support for the KRONOS Editor and Plug-In Editor 3, which let you edit and organize sounds from your Mac OS X or Windows computer. Plug-in operation allows you to save settings as part of your project with any VST- compatible Windows software, or any VST- or AU- compatible software on Mac OS X. The KRONOS Editor and Plug-In Editor 3 will be available for free download at <https://shop.korg.com/kronos/Support>.

#### Auto-remapping factory program references for KRONOS and KRONOS X sound files

Combinations, Songs, and Drum Tracks use Programs by referring to the Program's bank and number. The factory Programs of the new KRONOS are arranged differently from those of the original KRONOS and KRONOS X. In order for Combinations, Songs, and Drum Tracks designed for the older instruments to sound the same on the new KRONOS, the Program references need to be corrected to use the new locations. Software version 3.0.3 can now do this automatically.

The system now recognizes a .PCG file which was saved on the original KRONOS or KRONOS X with software version 2.1 or earlier, and offers the option to remap references to factory Programs accordingly.

- ⚠ This might include your own custom sounds, or commercial libraries (For KRONOS/KRONOS X) from Korg and third party developers.
- ⚠ This function is not available for .PCG files saved with software version 3.0 or higher, even if they were created on the original KRONOS or KRONOS X.



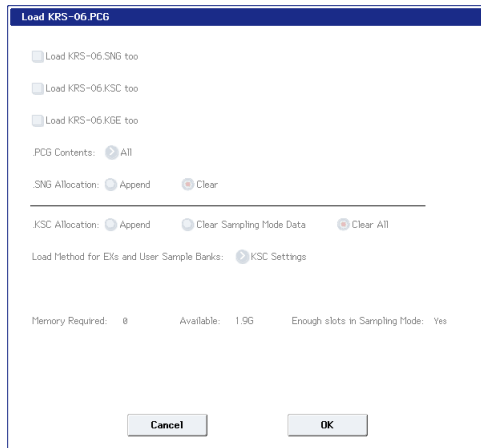
**1. This message appears when loading a .PCG file saved on the original KRONOS or KRONOS X with software version 2.1 or earlier.**

- Select [Yes] and proceed with the Load operation. The system will remap references to factory Programs to use the order in the new KRONOS.
- Select [No] and proceed with the Load operation. The file will be loaded without remapping.

*Note:* This option will also appear in the "Load .SNG" or "Load .KSC" dialogs, but only when the "Load .PCG too" option is checked and ".PCG Contents" is set to All. If you are converting Songs from older KRONOS versions, please use this method; automatic remapping is not available when loading .SNG files without an accompanying .PCG file. Remapping affects both the Track Program selections and bank/program change events.

## 2. The Load .PCG dialog opens.

To load the data, press the OK button. To cancel without loading, press the Cancel button.

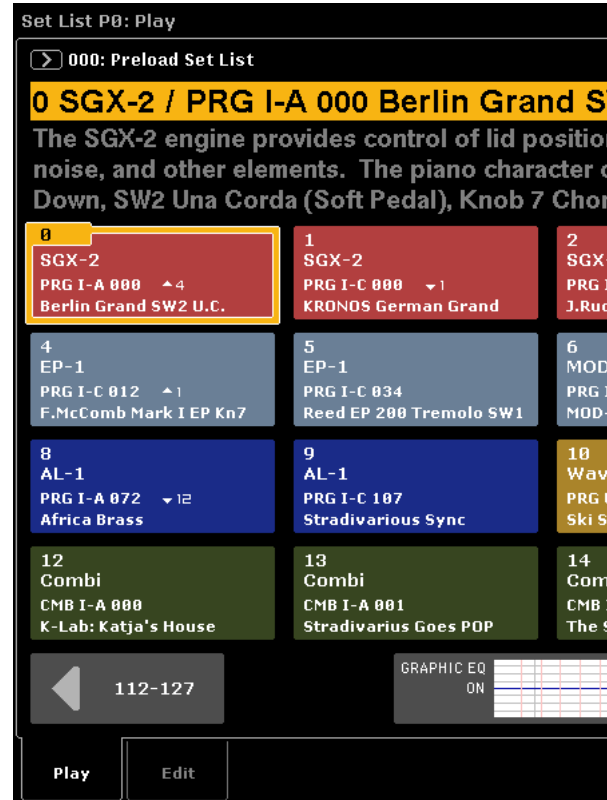


*Note:* When remapping is used, “.PCG Contents” will be set to “All,” and cannot be changed.

## Transposition display in Set List mode

In Set List mode, the Slot's Transpose setting is now shown on the Play page. This is convenient for confirming transposition settings during live performance.

For visual clarity, upwards and downwards arrows are used to show positive and negative settings. For instance, +4 is displayed as ▲ 4, and -1 is shown as ▼ 1. If Transpose is set to +0, nothing is shown.



# KORG INC.

4015-2 Yanokuchi, Inagi-City, Tokyo 206-0812 JAPAN

© 2015 KORG INC.

<http://www.korg.com>

E1