



Update Guide

KORG

Ⓔ

①

In conjunction with the **TRINITY series** operating system update, please make the following additions and changes to the Parameter Guide.

- 1** On page 101 change the first line of “5-1f: Track” to read as follows.
Selects the track whose musical data you wish to record or edit (or which will be the copy destination).

- 2** On page 101 change the first line of “5-1g: Start Measure/End Measure” to read as follows.

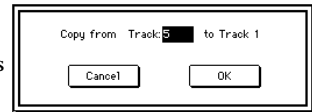
Specify the range of measures to be recorded or edited (or which will be the copy destination).

- 3** On page 107 change “5-1E: Copy Track” to read as follows.

The musical data of the track specified in the dialog box will be copied to the track specified in the tab 1 page.

Be aware that when you execute the Copy Track command, the musical data that was in the copy destination track will be lost.

- 1 In the tab 1 page, specify the copy destination track.
- 2 When this command is selected, the dialog box shown at right will appear.
- 3 Specify the copy source track.
- 4 To execute the Copy Track command, press the **OK button**. To cancel without executing, press the **Cancel button**.



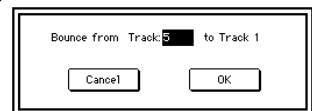
- 4** On page 107 change “5-1F: Bounce Track” to read as follows.

All musical data of the track specified in the tab 1 page and the track specified in the dialog box will be combined and placed in the track specified in the tab 1 page.

Be aware that when you execute the Bounce Track command, the data will be affected as follows:

- The combined musical data will be placed in the track specified in the tab 1 page, and all musical data of the track specified in the dialog box will be erased.
- Track settings (program and MIDI channel, etc.) will be those of the bounce destination track.
- If the track specified in the tab 1 page and the track specified in the dialog box contain identical control data in the identical location, incorrect operation may occur following the execution of this command. Before bouncing, use “5-1C: Event Edit” or “5-1M: Erase Control Data” etc. to erase the control data from one of the tracks.

- 1 In the tab 1 page, specify the bound destination track.
- 2 When this command is selected, the dialog box shown at right will appear.
- 3 Specify the bounce source track.
- 4 To execute the Bounce Track command, press the **OK button**. To cancel without executing, press the **Cancel button**.



5 On page 109, change “5-1J: Copy Measure” to read as follows.

Measures of musical data from the track specified in the dialog box will be copied to the measures that were specified in the tab 1 page.

When the Copy Measure operation is executed, musical data will be copied to the measures specified in the tab 1 page, allowing you to easily create repetitive musical sections such as refrains within a song. Be aware that when the Copy Measure operation is executed, the musical data will change as follows:

- If measures containing no musical data are copied, the copy destination measures will be blank.
- Musical data in the copy destination will be erased, and overwritten by the data that is copied.
- Musical data that is copied will playback according to the time signature of the copy destination.

- 1 In the tab 1 page, specify the copy destination track and Start Measure.
- 2 When this command is selected, the dialog box shown at right will appear.
- 3 Specify the copy source track. If you wish to copy the musical data of all tracks including the master track, **check All Tracks**.
- 4 Specify the desired first and last measure of the copy source track.
- 5 To execute the Copy Measure command, press the **OK button**. To cancel without executing, press the **Cancel button**.

6 On page 110, change “5-1K: Move Measure” to read as follows.

Measures of musical data in the track specified in the dialog box will be moved to the measure specified in the tab 1 page.

Be aware that when the Move Measure operation is executed, the musical data will change as follows:

- Data following the move source measures will be moved forward to fill the gap.
- Data following the move destination will be moved backward to make room.

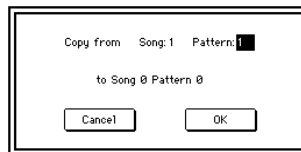
- 1 In the tab 1 page, specify the track and Start Measure of the move destination.
- 2 When this command is selected, the dialog box shown at right will appear.
- 3 Specify the move source track. If you wish to move the musical data of all tracks including the master track, **check All Tracks**.
- 4 Specify the desired first and last measure of the move source track.
- 5 To execute the Move Measure command, press the **OK button**. To cancel without executing, press the **Cancel button**.

7 On page 117, change “6-1F: Copy Pattern” to read as follows.

The musical data of the pattern specified in the dialog box will be copied to the pattern specified in the tab 1 page.

In the built-in sequencer of the **TRINITY series**, patterns are attached to a specific song, but this Copy Pattern command allows a pattern to be used by a different song.

- 1 In the tab 1 page, select the copy destination pattern.
- 2 When you select this command, the dialog box at right will appear.
- 3 Specify the copy source song and pattern.
- 4 To execute the Copy Pattern operation press the **OK button**. To cancel without executing press the **Cancel button**.

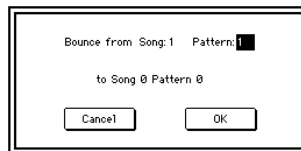
**8** On page 117, change “6-1G: Bounce Pattern” to read as follows.

The musical data of the pattern specified in the dialog box and of the pattern specified in the tab 1 page will be combined, and placed in the pattern specified in the tab 1 page.

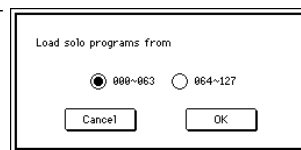
Be aware that executing the Bounce Pattern operation will affect the musical data as follows:

- The combined musical data will be placed in the pattern specified in the tab 1 page, but unlike the Bounce Track operation, the musical data of the pattern specified in the dialog box will not be erased.
- The time signature and length after the Bounce operation will follow the settings of the pattern specified on the tab 1 page.

- 1 In the tab 1 page, specify the bounce destination pattern.
- 2 When you select this command, the dialog box at right will appear.
- 3 Specify the bounce source song and pattern.
- 4 To execute the Bounce Pattern operation press the **OK button**. To cancel without executing press the **Cancel button**.

**9** On page 150, add the following as step 5 of “c: If a .PCG file or program file is opened, and a Bank file inside it is selected.”

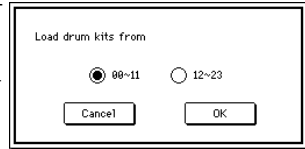
- 5 On a **TRINITY** that does not have the **PBS-TRI** option installed, the dialog box shown at right will appear when you attempt to load a PCG file containing 128 bank S programs. Use the radio buttons to select the set of programs that you wish to load, and press the **OK button** to load the programs.



To return to the previous display, press the **Cancel button**.

10 On page 151, add the following as step 4 of “h: If a .PCG file is opened and a Drumkit file is selected.”

- 4 On a TRINITY that does not have the PBS-TRI option installed, the dialog box shown at right will appear when you attempt to load a PCG file containing 24 drum kit programs.



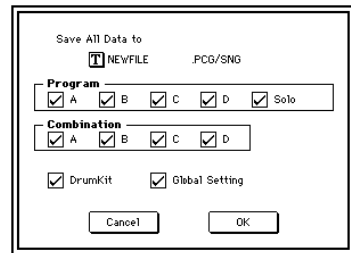
Use the radio buttons to select the set of drum kits that you wish to load, and press the **OK button** to load the drum kits.

To return to the previous display, press the **Cancel button**.

11 On page 153, the “1-2B: Save All” operation now allows you to save specified individual banks of Programs and Combinations. Change the explanation and procedure to read as follows:

All combinations, programs, drum kits, global parameters, and songs in internal memory will be saved to disk as a .PCG file or .SNG file (‘a’ and ‘k’ of the middle diagram on p.149). Programs and combinations of the banks you specify will be saved. However, this command can be used only when the current directory is a DOS directory.

- 1 When this command is selected, the dialog box at right will appear.
- 2 Press the text edit button to access the text entry dialog box, and specify the filename (⇐ Basic Guide, page 6).
- 3 Check the **check** boxes for the data items that you wish to save.



- 4 Combinations consist of programs, and some programs use a drum kit as their sound source.

As necessary, when saving combinations you should also save the programs used by those combinations, and when saving programs you should also save the drum kits used by those programs.

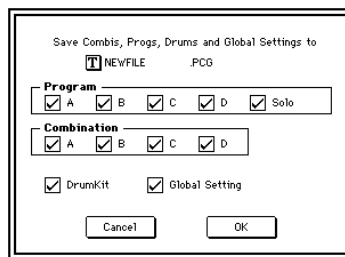
- 4 To save the data press the **OK button**. To cancel saving, press the **Cancel button**.


- 12** On page 153, the “1–2C: Save Combi/Prog” operation now allows you to save specified individual banks of Programs and Combinations. Change the explanation and procedure to read as follows:

All combinations, programs, and drum kits from internal memory, in addition to the global parameters, will be saved to disk as a .PCG file (diagram ‘a’ on page 149). You can specify the program and combination banks that will be saved.

This command is valid only if the current directory is a DOS directory.

- 1 When this command is selected, the dialog box at right will appear.
- 2 Press the text edit button to access the text entry dialog box, and specify the filename (⇐ Basic Guide, page 6).
- 3 Check the check boxes for the data items that you wish to save.



-  Combinations consist of programs, and some programs use a drum kit as their sound source.

As necessary, when saving combinations you should also save the programs used by those combinations, and when saving programs you should also save the drum kits used by those programs.

- 4 To save the data press the **OK button**. To cancel saving, press the **Cancel button**.

- 13** Add the following messages to “Messages” on pages 160, 162 and 163.

A

Audio tracks were skipped

Situation: On a **TRINITY series** instrument which does not have the **HDR-TRI** option, you attempted to load a file that included an audio track, and the data was loaded without the audio track.

N

No items were selected

Situation: In the Save All or Save Combi/Prog dialog box, no check boxes were checked.

T

There is no readable data

Situation: On a **TRINITY series** instrument which does not have the **PBS-TRI** option, you attempted to load a file which contained only banks C and D.

