

ROBLOX

Pa80 Card Converter

ENGLISH | Version 1.1

E 2

Contents

1	Installing Pa80 Card Converter
5	Creating a card's backup
7	Using Pa80 Card Converter
12	Some notes about data conversion

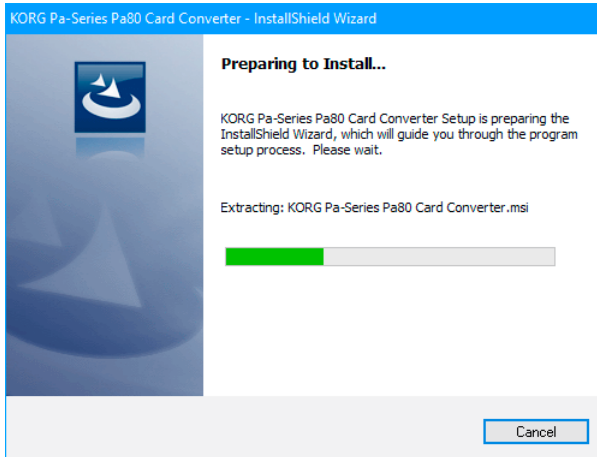
KORG Pa80 Card Converter

The Pa80 Card Converter program converts Pa80 PCM Card data to data that can be read by more modern Pa-Series instruments (starting from Pa1X). This involves three phases: installing the Pa80 Card Converter program, backing-up your Pa80 PCM card, and converting it through Pa80 Card Converter.

Installing Pa80 Card Converter

To install Pa80 Card Converter, you need a PC running under Windows® 7, 8 or 10. To convert your data, you will also need a floppy disk drive, either an internal or an external one.

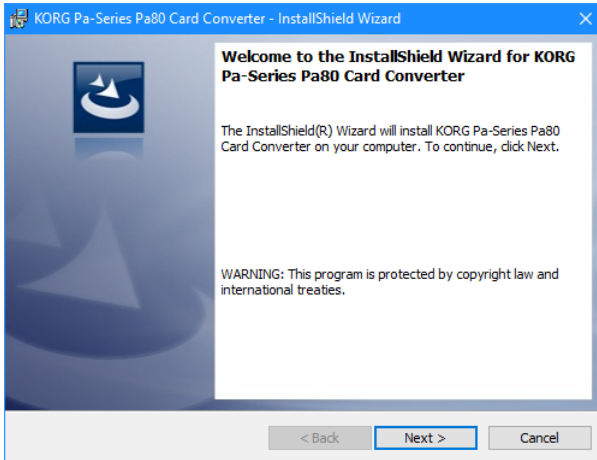
- 1 Double click on the Pa80CardConverterSetup.exe installer to install the Pa80 Card Converter program. The installer will check the system.



If the .NET framework v4.5 is missing from your system, you are asked to download it before retrying. Download the .NET framework from the following link, then run the installer again.

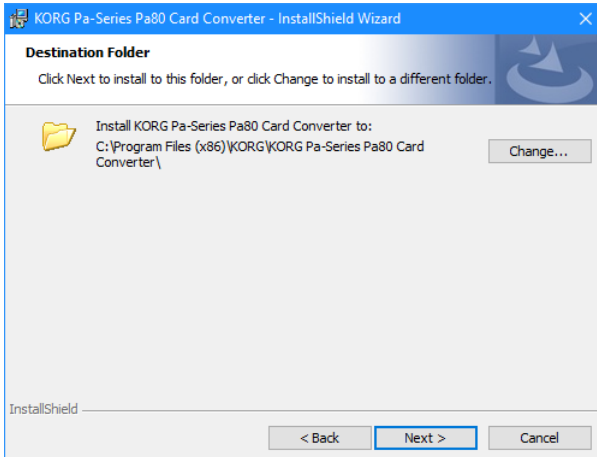
<https://www.microsoft.com/en-US/download/details.aspx?id=30653>

- 2 When the system check is completed successfully, the following dialog will appear:



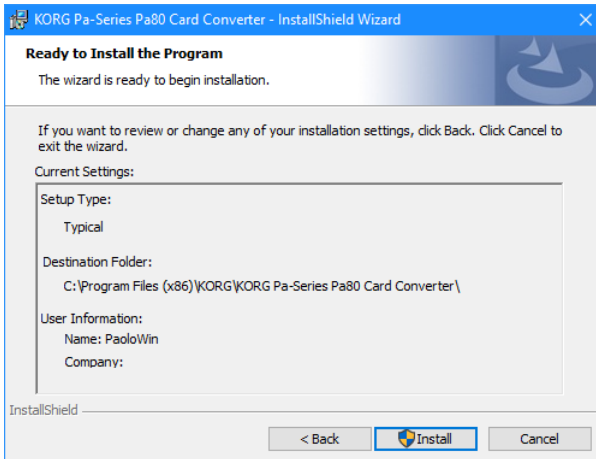
Click Next to continue.

- 3 In the next dialog, choose a location on the hard drive where to install the Pa80 Card Converter program.



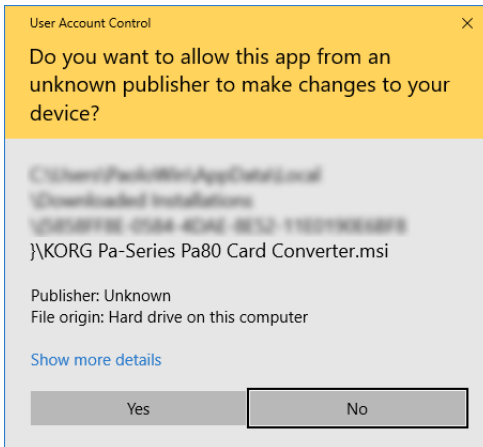
Click Next to continue.

- 4 The following dialog will appear, asking for confirmation of the selected location:



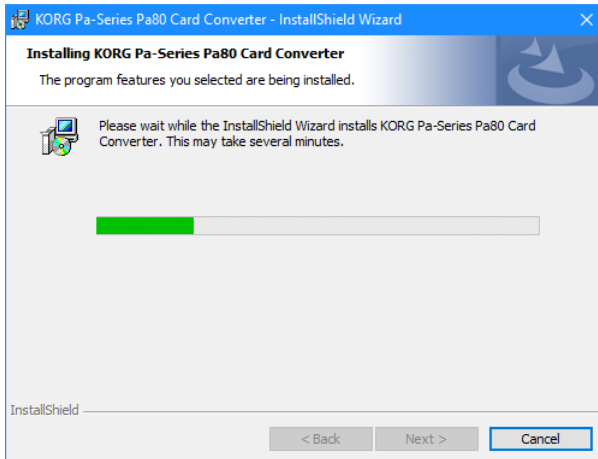
Click Install to confirm.

- 5 You are asked to confirm you are installing a safe program:



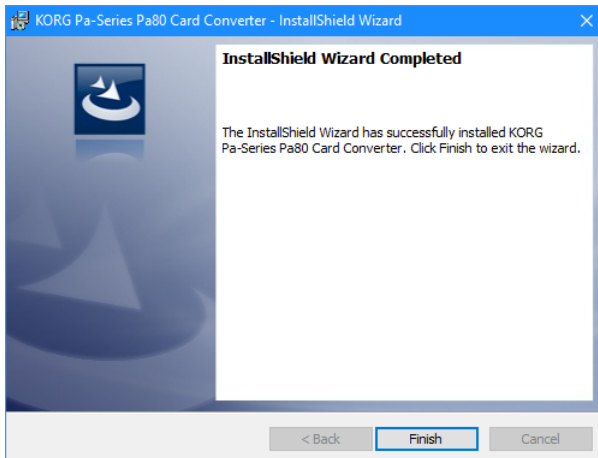
Click Yes to confirm.

- 6 The following dialog will appear, with a progress bar showing the installation progress:



Wait for the installation to be completed.

- 7 When done, the following dialog will appear.



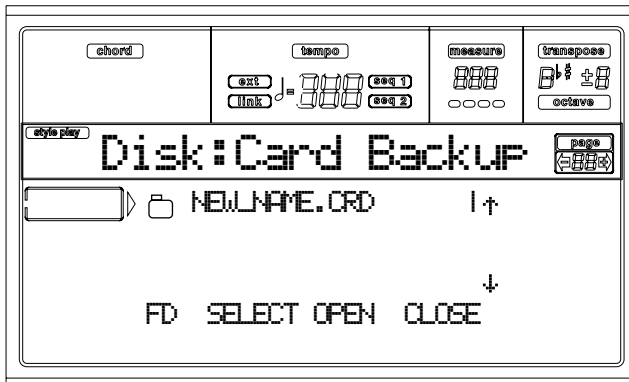
Click Finish, and the installation will be done.

Creating a card's backup

Before converting Pa80 data to a format that can be read by a modern Pa-Series instrument, Pa80 PCM Cards must be backed up to a series of floppy disks. Depending on the card's content, the backup procedure may take over 15 minutes to complete.

Warning: Please do not remove the card during backup is finished, or the operation will be aborted. Do not remove the floppy disks, or they will be damaged.

- 1 Insert the Flash Card to be backed up into the FLASH CARD slot on the back of Pa80.
- 2 Press the DISK button to access Disk mode.
- 3 Go to Page 10 - Card Backup.



- 4 Use the F1 button to select the target device (FD).
- 5 Press F2 (Save) to confirm. The "Are you sure?" message will appear. Press ENTER to confirm, or EXIT to abort.
- 6 Insert the various disks as required by the instrument, and press ENTER to continue (this message will appear even if a disk is already inserted):

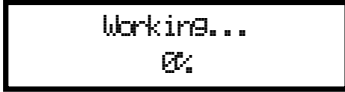
Insert 1.4MB FD #1
and Press Enter

If the floppy disk is not empty, Pa80 will ask if you want to format it:

Disk not empty!
Sh+Enter to format

Keep **SHIFT** pressed, and press **ENTER** to format the disk. Pa80 tries a Fast Format, and then proceeds to a Full Format if the former is not possible.

- 7 During the Backup operation, the "Working..." message will appear in the display, showing you the operation's progress.



Since the backup data is compressed, it is not possible to know how many disks you will need in advance. When finished, label the disks with progressive numbers, and keep them in a safe place.

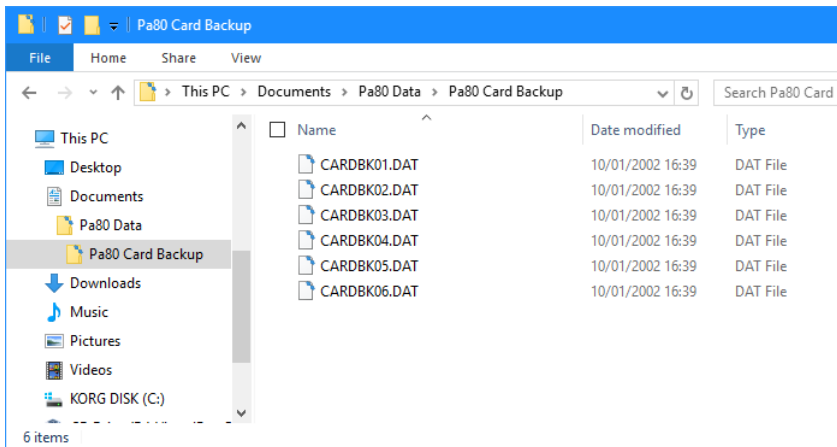
Using Pa80 Card Converter

When you have installed the Pa80 Card Converter program, and backed up your Pa80 PCM card data, you can start converting the data.

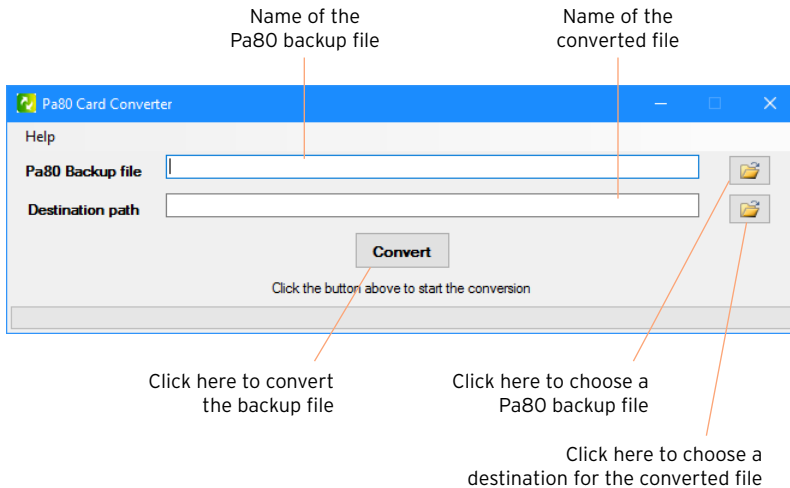
Please note that only User Sounds contained into the card are converted; User Sounds residing inside the instrument are not converted. As a consequence, if the Styles, Performances and STSs contained in the card were pointing to User Sounds contained in the instrument, they must be reprogrammed after conversion.

Before starting conversion, be sure that no files or folders is in Read-only or Hidden status. To check, right-click the files or folders to open the Properties window (General tab).

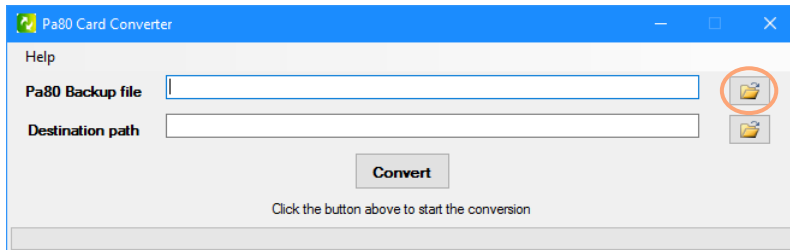
- 1 First of all, copy all the Pa80 floppy disk's content into a single folder in your PC's hard drive. Your original data must match the data structure shown in the following File Explorer's window:



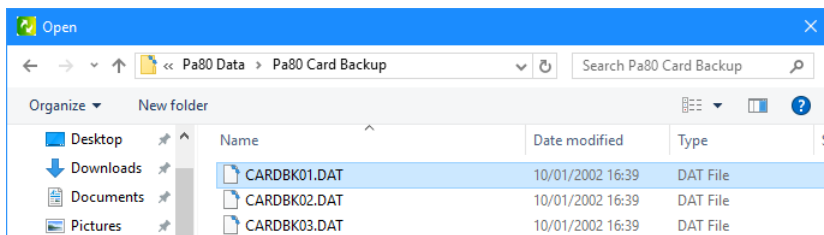
- 2 Double click the Pa80 Card Converter program icon to run it. The Main window will appear.



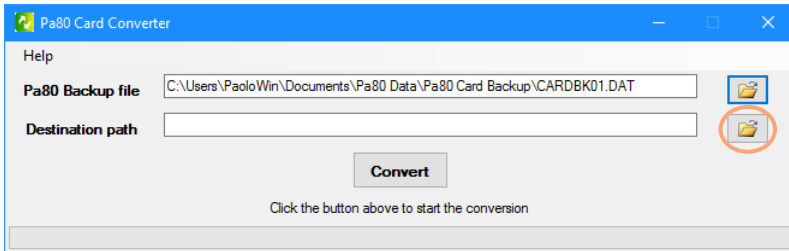
- 3 Click the Pa80 Backup file browse button:



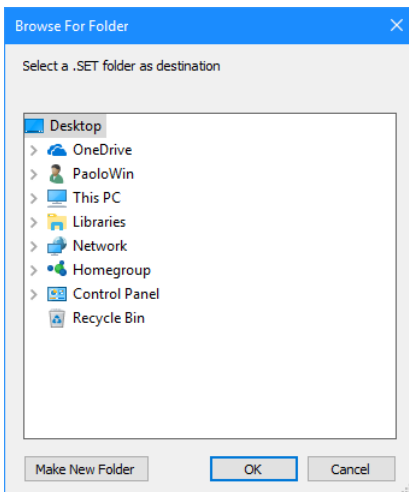
A standard file selector will appear. Choose the first backup file to be converted:



- Click the **Destination path** browse button, to select or create a SET folder where to save the converted files:

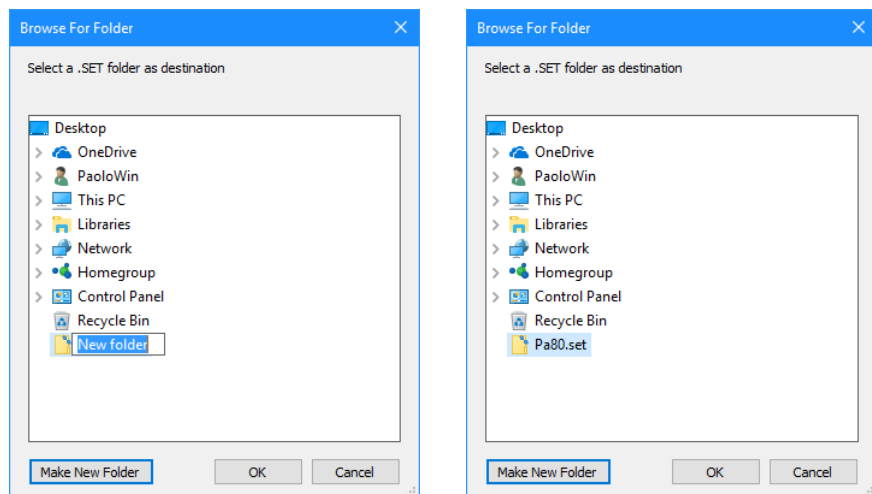


After having clicked the button, a file browser will appear:

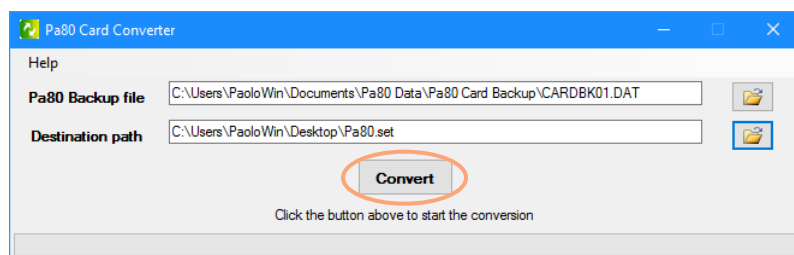


If you want to save into an existing SET folder, choose it and click OK. **Be warned that this action will delete all the data contained in the selected folder!**

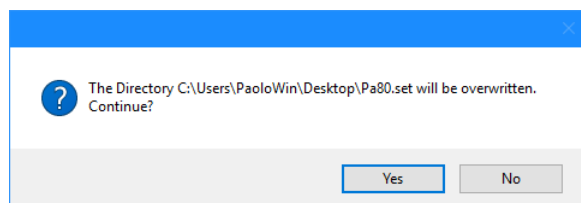
If you prefer to create a new SET folder, click the **Make New Folder** button and assign a name to the new folder, as shown in the following example:



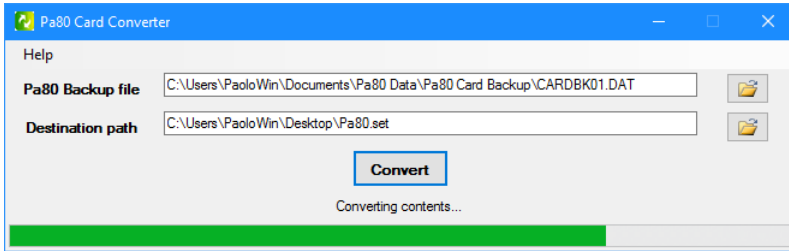
- 5 When a source and destination folders are selected, click **Convert** to start conversion.



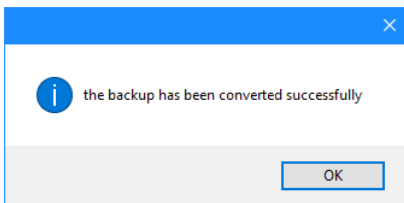
- 6 A warning message will appear, informing you that all data at the destination will be overwritten and deleted. Click **Yes** to continue.



- 7 The conversion will begin:



- 8 When done, a message will confirm the operation was successfully completed.



- 9 Now you can load the resulting SET folder as any other Pa-Series data. Please refer to the respective User's Manual for details.

Some notes about data conversion

While most data are converted by Pa80 Card Converter, data conversion is never a one-to-one match. Please consider the following issues.

- All data are converted in Pa1X format, to ensure compatibility with all Pa-Series instruments released after Pa80. For example, Pa4X and Pa900 can read Pa1X data.
- Pa80 PCM Samples contained in the card are converted to Pa1X User (RAM) PCM Samples.
- Pa80 Programs contained in the card are converted to Pa1X User Sounds, and are copied to the User banks. Please note that only Programs contained in the card are converted; User Programs based on Card Samples, contained in the Pa80 internal User banks, are not converted.
- Pa80 Styles contained in the card are converted to Pa1X User Styles, and are copied to the User banks. Program Change data referring to Card Programs are converted, so that the Style tracks recall the new User Sounds.
- Pa80 Performances and STSs, contained in the Card Styles, are not converted. Therefore, only Style tracks are converted, while Keyboard tracks are not.



Address

KORG ITALY SpA
Via Cagiata, 85
60027 Osimo (AN)
Italy

Web

www.korg.com