

Software Installation

Installing the software

Contents of the CD-ROM

The included CD-ROM contains the following.

- R3 Sound Editor software
- KORG USB-MIDI driver
- R3 Sound Editor owner's manual (HTML)
- R3 Effect guide (PDF)
- R3 Messages transmitted and received by the R3 (PDF)
- R3 MIDI Implementation chart (PDF)
- R3 MIDI Implementation (PDF)
- Software license agreement (PDF)

Please note before use

- All copyrights to the software associated with this product is the property of Korg Corporation.
- The license agreement for the software associated with this product is included separately. You must read this license agreement before you install the software. Your installation of the software will be taken as indicating your acceptance of this license agreement.

Operating requirements

KORG USB-MIDI driver

Windows XP

Supported operating systems

Microsoft Windows XP Home Edition, Professional Edition, or x64 Edition Service Pack 2 or later (MIDI driver for the x64 Edition is a Beta version)

Compatible computers

A computer with a USB port, that satisfies requirements of Microsoft Windows XP.

Mac OS X

Supported operating systems

Mac OS X 10.3.9 and Mac OS X 10.4.7 or later.

Compatible computers

An Apple Macintosh computer with a USB, that satisfies requirements of Mac OS X (including Intel-based Mac computers).

R3 Sound Editor

Windows XP

Supported operating systems

Microsoft Windows XP Home Edition, Professional Edition Service Pack 2 or later.

Compatible computers

Monitor: 1,024 x 768 pixels, 16-bit color or better

A computer with a USB port, that satisfies requirements of Microsoft Windows XP.

Mac OS X

Supported operating systems

Mac OS X 10.3.9 and Mac OS X 10.4.7 or later

Compatible computers

Monitor: 1,024 x 768 pixels, 32,000 colors or better

An Apple Macintosh computer with a USB, that satisfies requirements of Mac OS X (including Intel-based Mac computers).

Installing the KORG USB-MIDI driver and Sound editor software for Windows XP

NOTE You must have Administrator user privileges in order to install or uninstall software in Windows XP. For details, consult your system administrator.

NOTE Before you connect the R3 to your computer via USB, you must use the R3 application installer to install KORG USB-MIDI Driver Tools.

R3 Application Installer

The R3 Application Installer automatically installs the KORG USB-MIDI Driver Tools and Sample Librarian/MIDI Editor into your computer.

- 1 Insert the included CD-ROM into your computer's CD-ROM.

Normally, "R3 Application Installer" will start up automatically.

If your computer is set so that the installer does not start up automatically, navigate to the CD-ROM and double-click "KorgSetup.exe."

- 2 Follow the on-screen directions to install the KORG USB-MIDI Driver Tools and R3 Sound Editor software.

NOTE You must install KORG USB-MIDI Driver Tools if you want to use Sample Librarian/MIDI Editor via a USB port.

- 3 When you've installed all of the software you selected, exit the installer.

- 4 If necessary, install the KORG USB-MIDI driver. For details on the installation procedure, refer to "Installing the KORG USB-MIDI driver" below.

Installing the KORG USB-MIDI driver

In order to use Sample Librarian/MIDI Editor via a USB connection, you must install the "KORG USB-MIDI driver" in your computer.

You'll use KORG USB-MIDI Driver Tools to install the KORG USB-MIDI driver.

- 1 Before you proceed, finish installing KORG USB-MIDI Driver Tools into your computer.

- 2 Connect a USB cable between your computer's USB port and the R3's USB port. Then power-on the R3. When your computer detects that the R3 is connected, the standard Windows driver will be installed automatically. (This is not the KORG USB-MIDI driver.)

NOTE The driver must be installed separately for each USB port. If you want to connect the R3 to a USB port that's different than the one you used when installing the KORG USB-MIDI driver, you'll have to reinstall the KORG USB-MIDI driver again for that port.

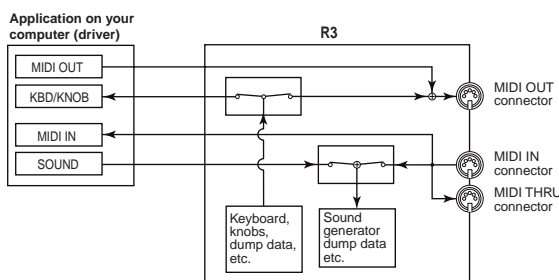
3 From the taskbar, click [Start] → [All Programs] → [KORG] → [KORG USB-MIDI Driver Tools] → [Install KORG USB-MIDI device].
The setup utility will start up.

4 Follow the on-screen directions to install the KORG USB-MIDI driver.
During the installation, you may see a dialog box warning you that "... has not passed Windows logo testing." Simply click [Continue] to proceed.

NOTE If you're unable to install, it may be that your computer is set to block installation of drivers that do not have a digital signature. Check the settings of your computer as described in "Unblocking installation of unsigned drivers".

5 When you've finished installing the KORG USB-MIDI driver, exit the installer.
If you are asked whether you want to restart your computer now, choose [Yes] to restart the computer.
For details on installing, setting-up, or uninstalling the KORG USB-MIDI driver, refer to the installation manual (HTML).
To view the installation manual, click the taskbar [Start] button and choose [All Programs] → [KORG] → [KORG USB-MIDI Driver Tools] → [Installation Manual].

The R3 and MIDI driver ports



MIDI IN devices

KBD/KNOB

This port receives MIDI messages from the R3's keyboard and knobs. This port is also used to receive data dumps.

NOTE If you want to use this port, set the Global parameter P04: MIDI page "Routing" to USB or USB+MIDI.

MIDI IN

This port receives MIDI messages that are input to the R3's MIDI IN connector. For example, this allows MIDI messages from an external sequencer to be sent to an application on your computer, or the R3 to be used as a USB-MIDI interface. To do so, choose this port in the MIDI input settings of your application.

MIDI OUT devices

SOUND

Use this port to play the R3's sound generator from your software, or to transmit data dumps.

NOTE If you want to use this port, set the Global parameter P04: MIDI page "Routing" to USB or USB+MIDI.

MIDI OUT

MIDI messages sent from your software via this port are transmitted without change from the R3's MIDI OUT connector. If you want to use the R3 as a USB-MIDI interface, for

example to transmit MIDI messages from your computer application to an external device, choose this port in the MIDI output settings of your application.

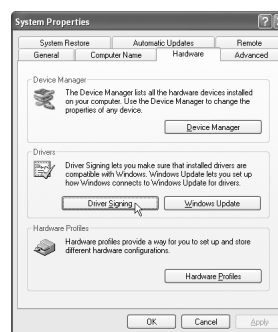
Setting up R3 Editor

For details on setting-up and using R3 Sound Editor, refer to the "R3 Sound Editor owner's manual."

Unblocking installation of unsigned drivers

If your computer is set to block installation of unsigned drivers, you won't be able to install the KORG USB-MIDI driver. Proceed as follows to change the setting so that the driver can be installed.

- 1 From the task bar, click [Start] → [Control Panel] to open the Control Panel.
- 2 In the Control Panel, double-click [System], and then click the [Hardware] tab.
- 3 In the "Driver" area, click [Driver Signing Options].



- 4 In the "What action do you want Windows to take?" choose [Ignore] or [Warn], and then click [OK].
If necessary, return this setting to its previous state when you've finished installing the KORG USB-MIDI driver.



Installing the KORG MIDI driver and R3 Sound Editor software for Mac OS X

Installing the software

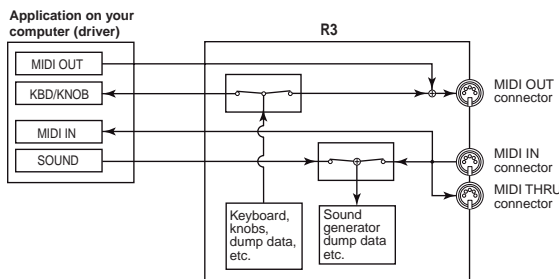
Here's how to start up the individual installers for the KORG USB-MIDI or R3 Sound Editor software and install them separately.

- 1 Insert the included CD-ROM into your computer's CD-ROM drive.
- 2 In the CD-ROM, double-click the installer (.pkg) of the desired software to start up the installer. The installers are located in the following folders.
 - KORG USB-MIDI driver
"KORG USB-MIDI Driver" folder → KORG USB-MIDI Driver.pkg
 - R3 Sound Editor
"R3 Sound Editor" folder → R3 Sound Editor.pkg
- 3 Follow the on-screen directions to install the KORG USB-MIDI driver or the R3 Sound Editor software.

NOTE You must install the KORG USB-MIDI driver into your computer if you want to use R3 Sound Editor via a USB port.

- 4 When you've installed the software, exit the installer.

The R3 and MIDI driver ports



MIDI IN devices

KBD/KNOB

This port receives MIDI messages from the R3's keyboard and knobs. This port is also used to receive data dumps.

NOTE If you want to use this port, set the Global parameter P04: MIDI page "Routing" to USB or USB+MIDI.

MIDI IN

This port receives MIDI messages that are input to the R3's MIDI IN connector. For example, this allows MIDI messages from an external sequencer to be sent to an application on your computer, or the R3 to be used as a USB-MIDI interface. To do so, choose this port in the MIDI input settings of your application.

MIDI OUT devices

SOUND

Use this port to play the R3's sound generator from your software, or to transmit data dumps.

NOTE If you want to use this port, set the Global parameter P04: MIDI page "Routing" to USB or USB+MIDI.

MIDI OUT

MIDI messages sent from your software via this port are transmitted without change from the R3's MIDI OUT connector. If you want to use the R3 as a USB-MIDI interface, for example to transmit MIDI messages from your computer application to an external device, choose this port in the MIDI output settings of your application.

Setting up R3 Editor

For details on setting-up and using R3 Sound Editor, refer to the "R3 Sound Editor owner's manual."