

KORG

SongBook Editor 2.0[®]

License Agreement

Your use of this software indicates your acceptance of this license agreement and warranty. Please carefully read these terms and conditions prior to the use of this software.

Copyright

All title and copyrights in and to this software are owned by KORG Italy SpA (hereafter simply indicated as "Korg"). This software is protected by copyright laws and international treaty provisions.

Freeware

Although this software is free, it is not "public domain". It is a copyrighted software program, and Korg reserves all rights. Therefore:

- This software cannot be sold, either by itself or in combination with any other product, without the express written permission of Korg.
 - If you are a user group which is publishing a CD-ROM or floppy collection, you may include this software and all of its related files without restriction, save that the entire original package is included.
 - If you are a hard disk vendor which distributes PD, shareware, and freeware on your disk drives, you are welcome to distribute this software. Contact Korg for up-to date versions and information.
 - Commercial publishers and distributors of CD-ROM software collections, to include any and all software compilations provided as an adjunct to printed or on-line publications, may not distribute this software on CD-ROM without the express written permission of Korg.
 - This software may be posted on an information service which charges its users for general connection time and downloading, but it may NOT be posted to an information service which will charge for the specific right to download it, without the express written permission of Korg.
 - This software may be given away as a support utility for a package which is itself to be given away. People who need to distribute it as a support utility should contact Korg for up-to-date versions and information.
- Please address all correspondence to:

KORG Italy SpA
Via Cagiata, 85
60027 Osimo (AN) - Italy
www.korg.com

Please note that we cannot provide technical support for this software (or any of our other freeware products).

Disclaimer of Warranty

THIS SOFTWARE AND THE ACCOMPANYING FILES ARE DISTRIBUTED "AS IS" AND WITHOUT WARRANTIES AS TO PERFORMANCE OR MERCHANTABILITY OR ANY OTHER WARRANTIES WHETHER EXPRESSED OR IMPLIED. NO WARRANTY OF FITNESS FOR A PARTICULAR PURPOSE IS OFFERED.

Distribution

This software is freeware and may be freely copied and distributed as long as the entire unmodified program is copied and no fee is charged.

Support

This software is given "as is". No support is granted by Korg.

Liability

Korg shall not be liable for errors contained in information and software downloaded from the Korg Website, or otherwise obtained from the Korg Website in any manner. Korg will not in any event be liable for any direct, indirect, special, incidental or consequential damages whatsoever (including lost profits, lost data, or business interruption) related to any use, reproduction, modification, or distribution of the software, results, documentation or links provided by the Korg Website.

No Disassembly or Decryption

You may not disassemble or decompile the Software without prior written consent of Korg.

Transfer

Your license will automatically terminate upon any transfer of the Software. Upon transfer, you must deliver the Software, including any copies and related documentation, to the transferee. The transferee must accept these License Terms as a condition to the transfer.

Termination

Korg may terminate your license upon notice for failure to comply with any of these License Terms. Upon termination, you must immediately destroy the Software, together with all copies, adaptations and merged portions in any form.

Data Handling

Data may sometimes be lost due to incorrect user action. Be sure to backup important data. Korg will not be responsible for damages caused by data loss.

Disclaimer

The information contained in this manual have been carefully revised and checked through. Due to our constant efforts to improve our products, the specifications might differ to those in the manual. Korg is not responsible for any eventual differences found between the specifications and the contents of the instruction manual - the specifications being subject to change without prior notice.

Trademarks

Windows is a registered trademark of Microsoft Corporation. All other trademarks or registered trademarks are the property of their respective holders.

Contents

Introduction	5
Installing the software	6
PC system requirements.	6
KORG instrument requirements	6
Installing the software.	7
Getting help.	7
SongBook and removable media	7
Creating and editing the SongBook on the instrument	8
Creating the Style-based SongBook Entries	8
Creating the MID/KAR- and MP3 file-based entries	8
Saving the SongBook to the internal memory.	8
Exporting custom Factory Style names	9
From here on – do not edit anything on the instrument!	9
Connecting the devices and running SongBook Editor	10
Connecting the instrument to a PC	10
Launching SongBook Editor	10
Choosing the Target	12
Opening the SongBook with SongBook Editor.	14
Opening the SongBook	14
Browsing the SongBook Entries in the Book panel.	14
Customizing the list view.	15
Showing/hiding columns.	15
Resizing columns	15
Changing the sorting order	16
Changing the fonts and colors.	17
Filtering the entries shown in the Book panel	18
Creating a new SongBook with SongBook Editor	19
Creating new SongBook Entries	20
Creating a new SongBook Entry.	20
Linking resources	21
Linking resources from an USB storage device.	21
Importing data to SongBook Entries.	22
Importing MID/KAR and/or MP3 files	22
Preparing the data.	22
Importing the files	23
Editing the entries	23

Editing basics	24
How to access editing.....	24
Editing parameters	24
Editing multiple entries.....	25
How to edit the parameters	25
Editing text strings.....	25
Choosing parameters from a pop-up menu.....	25
Automatically updated pop-up menus.....	26
Cutting, copying and pasting the entries.....	26
Deleting entries	26
Selecting all entries.....	26
Editing the SongBook Entries	27
Editing Style-based entries	27
Editing MID/KAR-based entries	30
Editing MP3-based entries.....	32
Copying the Keyboard Sets/STSs from other entries.....	33
Copying a single Keyboard Set/STS	33
Copying all Keyboard Sets/STSs	33
Custom/Set Lists	34
Creating a new Custom/Set List.....	34
Adding entries to the selected Custom/Set List	34
Seeing the content of a Custom/Set List	35
Editing entries	35
Moving entries up/down.....	35
Deleting a Custom/Set List	36
Remapping Style and Pads	37
The remapping table	37
Remapping	39
Saving the SongBook and reloading it to the instrument	43
Saving the edited SongBook.....	43
Quitting SongBook Editor	43
Disconnecting the instrument from the PC	43
Loading the edited SongBook on the instrument	44
Frequent operations	45
Changing reference to a bank of Styles	45
Changing reference to individual Styles.....	48
Changing the device and path to your MID/KAR, MP3 and Lyrics text files	52
Merging entries from two SongBooks.....	53
Exporting a list of entries	54
Appendix	55
Keyboard shortcuts	55
Version History	56

Introduction

Thank you for using KORG's SongBook Editor for the Pa-Series Professional Arrangers and HAVIAN 30 Digital Ensemble Piano. All models featuring the SongBook function are supported. With SongBook Editor you can:

- Create new SongBook Entries.
- Import multiple MID/KAR and MP3 files and batch-convert them to entries.
- Edit most entry parameters in multiple entries at once.
- Rename entries and edit parameters faster, by using the PC's keyboard.
- Add Lyrics as TXT files linked to the entries.
- See all parameters in adjacent columns, and quickly sort the entries in the Book list.
- Create and edit Set Lists/Custom Lists, using multiple selection and drag&drop.
- Drag&drop entries between SongBooks, and between SongBooks and text documents or spreadsheets.
- Change the file path of MID/KAR, MP3 files and text files.
- Change reference to Style locations and banks.
- Remap all references to the Styles and Pads of a different instrument.
- Copy Keyboard Sets/STSs between entries.
- Export a list of songs as a text file, to print your playlist for a show.

Installing the software

PC system requirements

To use SongBook Editor, you need a PC running under Microsoft® Windows® 7/8/8.1/10™.

KORG instrument requirements

The following table shows the requirements to use SongBook Editor with your KORG instrument.

	OS	MP3	HD/SSD	SD Card
Pa4X	latest version	standard	standard	–
Pa3X	latest version	standard	standard	–
Pa3XLe	latest version	standard	standard	–
Pa2X	latest version	standard	standard	–
Pa1X	latest version	optional	required	–
Pa900	latest version	standard	standard	–
Pa800	latest version	optional	suggested	–
Pa600	latest version	standard	standard	–
Pa500/Pa588	latest version	–	–	required
Pa300	latest version	standard	standard	–
HAVIAN 30	latest version	standard	standard	–

Note: You can find the latest OS in our web site (www.korg.com).

Note: MP3 entries will only work on models with an MP3 board installed, or with MP3 reading capabilities included as a standard feature.

Installing the software

After downloading the installer, follow these easy steps:

- 1 Double-click the installer's icon.
- 2 Follow the instructions appearing on screen.

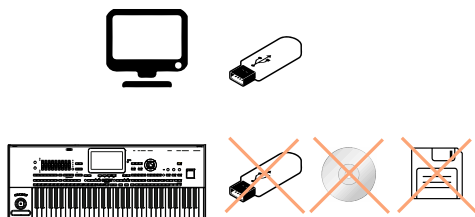
Getting help

Whenever you need to access these instructions, choose the **Help > SongBook Editor User Guide (F1)** command from the application menu.

SongBook and removable media

SongBook Editor cannot see any storage device connected to the instrument's USB HOST ports. However, it can read resources (MID/KAR, MP3, TXT files) from storage devices connected to the PC's USB port. You can therefore work with files on a storage device connected to your PC's USB port, then move the device to your instrument after editing.

Due to their low access speed, no floppy disks or CDs inserted in the Pa1X's drives can be seen by SongBook Editor.



Creating and editing the SongBook on the instrument

Before editing your SongBook with SongBook Editor, there are some operations you should carry on on your instrument to create your original SongBook.

Creating the Style-based SongBook Entries

It is advisable to create Style-based Entries on the instrument, since this will allow all the actual values of the Style Settings or Style Performance (including Sounds, EQ, FX, Keyboard Sets, STS, Pads, etc...) to be copied to the SongBook Entries. On the contrary, creating Style-based Entries with SongBook Editor would only assign them default values, and would therefore require some additional work.

- 1 On the instrument, create a new SongBook database, or edit an existing one. Please read the instrument's User Manual for the relevant instructions.
- 2 Still on the instrument, create all Style-based SongBook Entries, as described in the User Manual.

Creating the MID/KAR- and MP3 file-based entries

If you want, create the MID/KAR- and MP3-based entries on the instrument. However, please keep in mind that you can do it in an easier and quicker way, if there are many entries to create, by using SongBook Editor.

Saving the SongBook to the internal memory

Before editing the SongBook database with SongBook Editor, you must create the relevant files in the internal memory of your instrument.

- 1 On the instrument, save the SongBook to the internal memory, by using the **Media (Disk) > Save All** operation. A new SET folder will be created, containing the Book (SBD) and Custom/Set List (SBL) files, together with all the other User data (including the User/Favorite Styles).

- 2 For safety reasons, before any editing operation we suggest you make a backup of the instrument's memory content, by using the **Media (Disk) > Utility > Full Resources Backup** command.

Important: Always keep a backup copy of your original SongBook files before editing them! Saving an edited SongBook file over an existing one will permanently delete the older one.

Exporting custom Factory Style names

Standard Factory Style names are always shown in SongBook Editor. If you customized the Factory Style banks, you have to export their names before editing.

- 1 On the instrument, remove the write and save protection from the Factory Styles, by deselecting the **Factory Protect** or **Factory Style and Pad Protect** checkbox in the **Global > Mode Preferences > Media**, or the **Media (Disk) > Preferences** page.
- 2 Save the Factory Styles, as explained in the following table.

Model	Factory Style saving procedure
Pa4X, Pa3XLe, Pa900, Pa600, Pa300, HAVIAN 30	Save the Factory Styles together with the other data, by using the Media > Save All command.
Pa3X, Pa2X, Pa800, Pa1X, Pa500, Pa588	Separately save each single Factory Style bank into the SET folder where you will save the SongBook files, by using the Media (Disk) > Save > Bank operation. Save all the Factory Style banks, or the missing names will be replaced by default names in SongBook Editor.

From here on - do not edit anything on the instrument!

Starting from the following pages, all editing will be done on a PC and not on your instrument. Any further editing carried on on the instrument before reloading the modified SongBook files will be lost.

Connecting the devices and running SongBook Editor

Before editing the SongBook, you must connect your instrument to a PC, and run SongBook Editor.

Connecting the instrument to a PC

To make your instrument communicate with a PC running SongBook Editor, you must connect them by using a USB cable. When it is connected to a Pa-Series instrument, the PC can see the instrument's internal memory as if it was an ordinary storage device. At this point, you can directly work on the SongBook files, and the MID/KAR, MP3 and TXT files contained in the internal memory of the instrument.

- 1 Use a standard USB cable to connect the **USB DEVICE** port of the instrument to an **USB** port of the PC.
- 2 On the instrument, go to the **Media (Disk) > USB** page. On most instruments, choose the **KORG DISK** device (that is, the internal memory). Then press the **Enable** button. The icon of the instrument's internal memory will appear among those of all the devices connected to your PC.
- 3 If you moved the linked resources (MID/KAR, MP3, TXT files) to an external storage device (used as an external portable library), connect it to a different **USB** port on your PC.

Launching SongBook Editor

After having connected the instrument to a PC, run SongBook Editor. The main screen of the software will appear, with a standard menu and a single window split in three panels, as shown in the illustration below. (When first running the application, the panels are empty; we show them populated for ease of understanding).

The **Book** panel. This is where the full list of Songs included in the SongBook appears. It is the equivalent of the **Book** page of the instrument.

KORG PA-Series SongBook Editor - [C:\Program Files\KORG\SB Editor\Pa2x Standard SongBook.set]														
File Edit Help														Target: Pa4K
Book														
Sel. ... /	Type	Name	Artist	Genre	Key	Tempo	Meter	M.Transp.	Synchro ...	Synchro ...	Memory	Keyboard...	Keyboard...	Keyboar ...
--	sty	(Wanna c...		Pop	----	64	4/4	0	unchanged	unchanged	unchanged	Steel Guit...	Piano	
--	sty	1 day my ...		Swing W...	----	160	3/4	0	unchanged	unchanged	unchanged	Miles Tru...	Classi...	
--	sty	1 momen...		Ballad	----	80	4/4	0	unchanged	unchanged	unchanged	Piano	Piano Pi...	
--	sty	1/2 minute		Pop	----	108	4/4	0	unchanged	unchanged	unchanged	Nylon Gui...	Piano	
--	sty	1000gior...		Ballad	----	76	4/4	0	unchanged	unchanged	unchanged	Piano	E.Piano	
--	sty	3 times a...		Ballad	----	78	3/4	0	unchanged	unchanged	unchanged	ConcertG...	E.Guitar	
--	sty	4 your love		Ballad	----	67	4/4	0	unchanged	unchanged	unchanged	Piano bell	Harmon	
--	sty	A believer		Pop Rock	----	164	4/4	0	unchanged	unchanged	unchanged	Organ	El. Guitz	
--	sty	A blue vel...		Soundtrack	----	80	4/4	0	unchanged	unchanged	unchanged	Nylon Gtr ...	Cornet	
--	sty	A day in ...		Ballad	----	103	4/4	0	unchanged	unchanged	unchanged	Fantasy	Nylon G...	
--	sty	A felicia...		Latin	----	104	4/4	0	unchanged	unchanged	unchanged	Real Nylon	Alto Sax	
--	sty	A gigolo		Pop	----	123	4/4	0	unchanged	unchanged	unchanged	Jimmy Or...	Piano	
--	sty	A groovy ...		Ballad	----	72	4/4	0	unchanged	unchanged	unchanged	Piano Pad...	Sopran...	
Filter... <input type="checkbox"/> Filtered: 668 Songs														
Total: 668 Songs														
Set Lists														
Selected List														
Disco	Index	Sel. No.	Type	Name	Artist	Genre	Key	Tempo	Meter	M.Transp.	Synchro ...	Synchro ...	Me	
Jazz	1	--	sty	All me		Jazz	----	134	4/4	0	unchanged	unchanged	un	
Pop	2	--	sty	All you		Jazz	----	140	4/4	0	unchanged	unchanged	un	
Rock	3	--	sty	Autumn l...		Jazz	----	170	4/4	0	unchanged	unchanged	un	
World	4	--	sty	Blues waltz		Jazz	----	148	3/4	0	unchanged	unchanged	un	
Ballad	5	--	sty	Daylight ...		Jazz	----	145	4/4	0	unchanged	unchanged	un	
	6	--	sty	Favourite...		Jazz	----	164	3/4	0	unchanged	unchanged	un	
	7	--	sty	Four miles		Jazz	----	220	4/4	0	unchanged	unchanged	un	
	8	--	sty	Indian Lo...		Jazz	----	175	4/4	0	unchanged	unchanged	un	
	9	--	sty	I get misty		Jazz	----	70	4/4	0	unchanged	unchanged	un	
< Songs In List: 9 >														
Total Lists: 6														

The **Set Lists/Custom Lists** panel. This is where you can see all the available Set Lists/Custom Lists associated to the selected Book. This panel is the equivalent of the **Set List/Custom List** pop-up menu of the instrument.

The **Selected List** panel. This is where you can see the content of the selected Set List/Custom List. It is the equivalent of the **Set List/Custom List** page of the instrument.

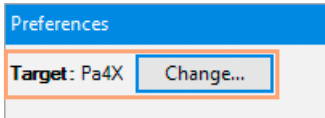
Choosing the Target

The first time you run SongBook Editor, use the **Target** parameter in the **Preferences** dialog to select your instrument as the “target” device. This will allow the software to use the correct file format for your instrument. You won’t have to select it again later, since this setting will remain memorized through all the subsequent editing sessions.

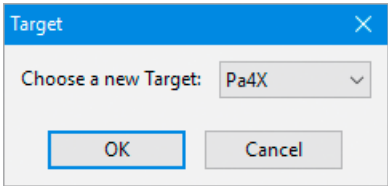
Please note that SongBook Entries created with more recent Pa-Series models could be removed from the SongBook, when choosing an older model as the target.

Chosen Target	Entries preserved/removed
Pa4X	All the entries from any Pa-Series instrument are always pre-served.
Pa3X, Pa3XLe, Pa900, Pa600, Pa300, HAVIAN 30	All the entries from any Pa-Series instrument are always pre-served (except for the entries from Pa4X, that are removed when choosing this target, or opening a SongBook file after having selected the target).
Other Pa-Series Models	Entries created with Pa4X, Pa3X, Pa3XLe, Pa900, Pa600, Pa300, HAVIAN 30 are removed when choosing this target. These entries are also removed when opening a SongBook file after having selected the target.

- 1 Choose the **File > Preferences...** command to open the **Preferences** dialog. You will see the **Target** parameter on top of the dialog.

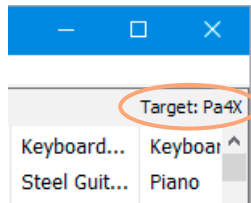


- 2 Click the **Change...** button to open the **Target** dialog.



- 3 Choose from the list the Target corresponding to your instrument, then click the **OK** button to confirm.
- 4 Click the **OK** button to close the **Preferences** dialog.

When done, the chosen Target will be shown in the top-right corner of the application window.



Opening the SongBook with SongBook Editor

The SongBook can be opened with SongBook Editor, where you can see its content in a database-like fashion.

Opening the SongBook

Before editing, open the SongBook files from the internal memory of the instrument. In SongBook Editor, choose the **File > Open** command, and browse the files in the internal memory of the instrument.

- 1 Find the SET folder containing the instrument's internal data (you previously saved), and click its name to highlight it.
- 2 Click the **Select Folder** button to load the SET folder.

Browsing the SongBook Entries in the Book panel

After opening the SongBook files, the list of SongBook Entries that it contains will appear in the **Book** panel (corresponding to the **Book** page on the instrument). The Book's content is shown in a database-like fashion, with each SongBook Entry corresponding to a row, and the various parameters of the entry shown in the adjacent columns.

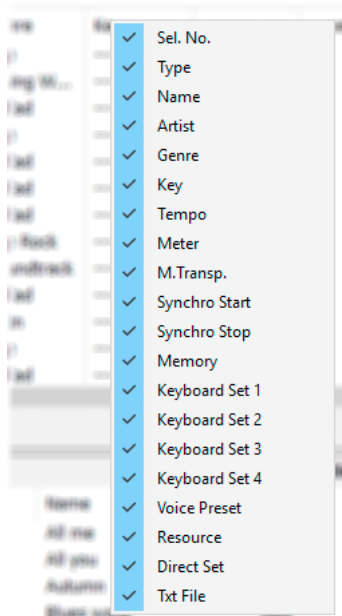
Book													Target: Pa4x
Sel. ...	Type	Name	Artist	Genre	Key	Tempo	Meter	M.Transp.	Synchro ...	Synchro ...	Memory	Keyboard...	Keyboar ^
--	midi	LoveSong		Ballad	----	240	1/4	0	n/a	n/a	unchanged	Piano 1	Piano 2
--	mp3	A Better ...		Alternativ...	----	--	---	0	n/a	n/a	unchanged	Piano 1	Piano 2
--	sty	Long tral...		Pop	----	120	4/4	0	unchanged	unchanged	unchanged	Wurlly	Organ
--	sty	Black or b...		Pop	----	115	4/4	0	unchanged	unchanged	unchanged	Crunch Gtr	Steel gu
--	sty	Morning		Pop	----	92	4/4	0	unchanged	unchanged	unchanged	Jazz Guita	Suitecas
--	sty	Laura no...		Pop	----	128	4/4	0	unchanged	unchanged	unchanged	Steel Guit...	Organ
--	sty	This is life		Pop	----	105	4/4	0	unchanged	unchanged	unchanged	Studio St...	Piano &
--	sty	Ballade A...		Ballad	----	70	4/4	0	unchanged	unchanged	unchanged	Classic Gr...	Orchestr
--	sty	Il mio sole		Pop	----	98	4/4	0	unchanged	unchanged	unchanged	Classic Gr...	Tenor S;
--	sty	All at one...		Ballad	----	65	4/4	0	unchanged	unchanged	unchanged	Classic E...	Tenor S;
--	sty	All the time		Ballad	----	88	4/4	0	unchanged	unchanged	unchanged	Studio St...	Trumpet v
< >													
Filter... <input type="checkbox"/> Filtered: 670 Songs													
													Total: 670 Songs

Customizing the list view

Showing/hiding columns

You can choose which columns to see in the panels.

- 1 Click a **column header** with the right mouse button.
- 2 When the list of available options appears, select/deselect the name of the column to be shown/hidden.



Resizing columns

You can change the width of each column to better fit the content.

- 1 When moving the mouse pointer over the line dividing two **column headers**, the pointer's shape changes to the resize tool. Grab the right margin of a **column header**, then drag it.
- 2 To set a column's width to the optimum size, **double-click** its right margin.

Changing the sorting order

You can change the order of the SongBook Entries shown in the list, by choosing a particular sorting criterion (by Name, Genre, Author, and so on).

- 1 Click a **column header** to select the corresponding sorting criterion.
- 2 Click a **second column header** to change the sorting.

Each time you choose a different sorting criterion, the previous criterion is considered as a “sub-criterion” for the new one. For example, you can alphabetically order your entries by Name:

Name ↕	Genre
(Wanna come) ...	Pop
1 day my prince	Swing Waltz
1 moment in time	Ballad
1/2 minute	Pop
1000giorni di noi	Ballad

Then you change the order to Genre; inside the genre alphabetical ordering, entries are still alphabetically ordered by name:

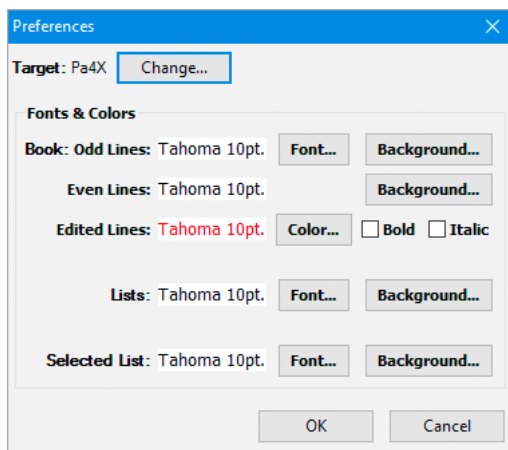
Name	Genre ↕
1 moment in time	Ballad
1000giorni di noi	Ballad
3 times a lady	Ballad
4 your love	Ballad
A day in Paradise	Ballad

- 3 Click the **selected column header** to change the sorting order from ascending to descending, or vice versa.

Changing the fonts and colors

Fonts and colors of the list items can be customized.

- 1 Choose the **File > Preferences...** command to open the **Preferences** dialog.

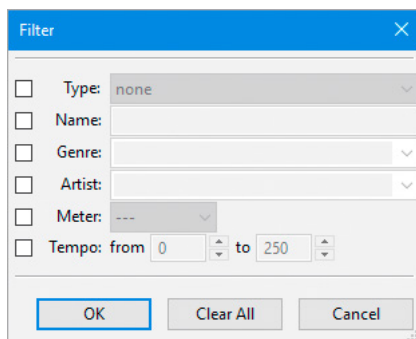


- 2 Use the options of the **Fonts & Color** section to change the fonts and assign a different background color to the various panels. You can also assign different background colors to the alternating odd and even rows. Entries edited but not yet saved can have their own color.
- 3 When done, click the **OK** button to close the dialog.

Filtering the entries shown in the Book panel

If you want to view only the SongBook Entries based on the songs of a single author, or the songs of a particular genre, or selected according to other criteria, you can apply a 'filter' to the current view.

- 1 To define the view criteria click the **Filter...** button on the lower left corner of the **Book** panel, or choose the **Edit > Filter... (Ctrl+F)** command to open the **Filter** dialog.



- 2 Edit the various filtering criteria (the available criteria are the same as on the Pa). When done, click the **OK** button to close the dialog.
- 3 Click the **Filtered** checkbox in the lower left corner of the **Book** panel to make the checkmark appear. The entries shown in the **Book** panel will change.

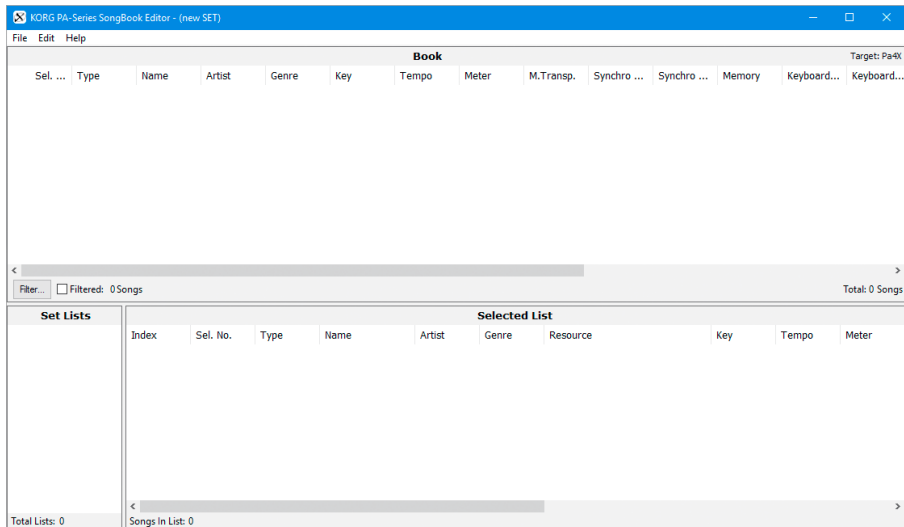
☒ **Filtered:** 36 Songs

- 4 When you want to see all the entries again, remove the checkmark from the **Filtered** checkbox.

Creating a new SongBook with SongBook Editor

You can create a new, empty SongBook, where you can manually add new entries or import MID/KAR and MP3 files to automatically create new entries.

- To create a new SongBook, choose the **File > New** command from the menu.



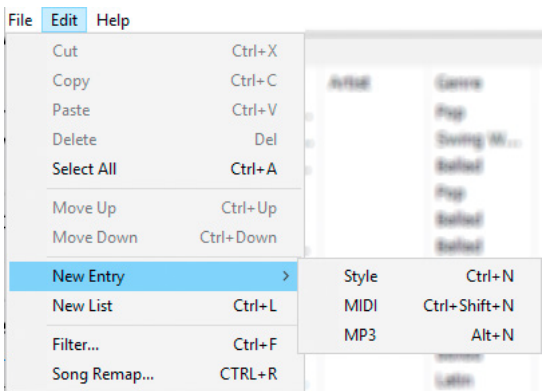
Creating new SongBook Entries

You can create new entries, to be added to a new or existing SongBook.

Creating a new SongBook Entry

You can create three different types of SongBook Entry.

- 1 Use the **Edit > New Entry** commands to create new SongBook Entries with SongBook Editor.
 - Choose the **Edit > New Entry > Style (Ctrl+N)** command to create a Style-based entry. As an alternative, **right-click** and choose the **New Entry > Style** command.
 - Choose the **Edit > New Entry > MIDI (Ctrl+Shift+N)** command to create a MID/KAR-based entry. As an alternative, **right-click** and choose the **New Entry > MIDI** command.
 - Choose the **Edit > New Entry > MP3 (Alt+N)** command to create an MP3-based entry. As an alternative, **right-click** and choose the **New Entry > MP3** command.



- 2 Edit the various parameters in the **Edit** dialog (see “Editing the SongBook Entries” on page 27).

Linking resources

When you create a new entry, you can link any of the resources contained in your instrument's internal memory. You can also link some of the resources from an USB storage device, as described below.

Resource Type	Position
Keyboard Sets/STsS	System. Direct Keyboard Sets also on internal memory, internal HDD, USB storage device
Style	System. Direct Styles also on internal memory, internal HDD, USB storage device
MID/KAR file	Internal memory, internal HDD, USB storage device
MP3 file	Internal memory, internal HDD, USB storage device
TXT file	Internal memory, internal HDD, USB storage device
Voice Preset	System

Please keep in mind that no resource is copied into the SongBook Entries, but they are only linked to them. If you move the SongBook files to a different instrument, or the resources to a different folder, links can be broken, unless you recreate exactly the same data structure (see "Frequent operations" on page 45).

Linking resources from an USB storage device

You might want to keep your MID/KAR, MP3 and TXT file collections on an USB storage device (memory stick, external HD drive...) instead of your instrument's internal memory. If your instrument supports Direct Keyboard Sets and Styles, you can also keep them in the same device.

Move all your resources to an external USB storage device. While editing a SongBook with SongBook Editor, connect the USB storage device to the PC. When finished editing, connect the USB device back to your instrument. When using the SongBook, your instrument will need this device to be connected to its USB HOST port.

Importing data to SongBook Entries

Instead of being individually created one by one, SongBook Entries can be created *en masse* by importing a series of MID/KAR or MP3 files.

Importing MID/KAR and/or MP3 files

You can import all the MID/KAR and MP3 files contained in a folder residing inside the internal memory of your instrument, or in an external USB storage device. These files will be automatically converted into SongBook Entries. The imported entries can be added to an existing SongBook, or to a new, empty SongBook.

In case there are ID3 data inside the imported MP3 files, these will be converted into SongBook data (Title, Author...). Basic data and some metadata contained inside MID/KAR files will also be converted into SongBook data (Key, Time Signature, Tempo...). With Pa4X, Pa3X, Pa3XLe, Pa900, Pa600, Pa300 and HAVIAN 30, the Master Transpose is also converted.

Preparing the data

It is advisable that all the files stay in the same place. Copy all your MID/KAR, MP3 and TXT files into the internal memory of the instrument, or into an external USB storage device to be used as your instrument's external library. The files have to be accessible from your instrument when you use the SongBook you are editing.

- 1 Connect any external storage device to your PC. If you intend to use an USB storage device as the instrument's external library, connect it to the PC.
- 2 Connect your instrument to the PC, and enable USB connection on the instrument.
- 3 Open the external devices and the instrument memory content into new windows of your PC's desktop.
- 4 Copy all the sparse MID/KAR, MP3 and TXT files from the external devices to the internal memory of the instrument, or to the USB storage device to be used as the instrument's external library. Collecting the different types of songs in

separate folders (for example, by name, music genre or type of file) will make retrieving them later easier.

Important: Do not copy files inside any of the SET folders! These folders are reserved to the instrument's internal data, and must be left untouched. Use generic folders instead.

Importing the files

After you have moved all the files into your instrument's internal memory or external USB storage device, start importing them.

- 1 In SongBook Editor, choose the **File > Import Files... (Ctrl+I)** command. A standard file selector will appear. You can then select files from the internal memory of your instrument or from the external library device.
- 2 Select the file(s) with the .mid, .kar and .mp3 extensions you want to import. Then click the **Open** command to import the selected MID/KAR and MP3 files, and convert them to SongBook Entries.

Hint: When in this file selector, you can use the Shift+click shortcut to select multiple contiguous files, or the Ctrl+click shortcut to select multiple non-contiguous files.

Editing the entries

After having imported the files, you can go on editing single or multiple entries. For example, you can copy the Keyboard Sets or Voice Presets from other entries, choose the Author and Genre, link a text file to be used as the Lyrics, and so on. Please refer to the relevant instructions later in this manual.

Editing basics

Before editing, please learn the basic editing operations. These operations affect the entries in all panels (Book, Set Lists/Custom Lists, Selected List).

How to access editing

Editing parameters

- **Double-click** the entry you want to edit to open the **Edit** dialog (see “Editing the SongBook Entries” on page 27).
- As an alternative, **right-click** it, and choose the **Edit** command.

Please note that not all parameters can be edited, and not all parameters may appear for the chosen target. The following table shows which parameters can or can't be edited. Please see the instrument's User Manual for more information on their meaning.

Parameter	Editable
Index (<i>only in Set List/Custom List entries</i>)	
Sel.No. (<i>Song Selection Number</i>)	✓
Type (<i>Resource Type</i>)	
Name (<i>SongBook Entry's Name</i>)	✓
Artist ^(*)	✓
Genre ^(*)	✓
Key ^(*)	✓
Tempo	
Meter ^(*)	✓
Master Transpose	
Synchro Start (<i>Synchro Start button</i>)	✓
Synchro Stop (<i>Synchro Stop button</i>)	✓
Memory (<i>Memory button</i>)	✓
Harmony Track	✓
Keyboard Set #1...4	only on some models
Voice Preset	only on some models
Global Voice Preset	only on some models

Parameter	Editable
Resource <i>Style based entry: Style bank and Style name. Song based entry: File path (including name) of the associated MID/KAR or MP3 file</i>	√
Direct SET (<i>SET folder used as the Direct folder</i>)	only on some models
Txt file <i>File path (including name) of the text file associated to the SongBook Entry</i>	√
(*) Note: As in the instrument, these parameters are just indicators. They have no effect on the entry's playback.	

Entries that have been edited, but not yet saved, are shown in red (by default). They will become black again once the SongBook has been saved. Please note that text colors can be customized in the **Preferences** dialog (see "Changing the fonts and colors" on page 17).

Editing multiple entries

You can select and edit more than a single entry at once. Please be advised that some parameters cannot be modified when editing multiple entries (for example, the entry's name, or parameters pertaining to different types of entries).

- 1 Click the entries to select.
 - Select more consecutive entries by **Shift-clicking**.
 - Select more non-consecutive entries by **Control-clicking**.
- 2 Right-click the selected entries and choose the **Edit** command.

How to edit the parameters

Editing text strings

Some parameters - for example, SongBook Entry names - require you enter a text string. Note that names are case-sensitive, i.e., "Name" is not the same as "name". Also, please note that duplicate entry names are not allowed.

Choosing parameters from a pop-up menu

Some parameters allow you to choose a value from a pop-up menu. Click the down-pointing arrow next to the option name and choose the desired value.

Automatically updated pop-up menus

Each time you create a new entry or edit an existing one, its data are added to the pop-up menus, so that you can choose them when entering/editing other entries. For example, if you enter “Rock” in the **Genre** field, and this genre is not yet included in the list, the “Rock” option will be automatically added to the **Genre** pop-up menu.

Cutting, copying and pasting the entries

You can use the standard Cut, Copy and Paste operations inside SongBook Editor, between different SongBook Editor instances, or between SongBook Editor and a text editor or spreadsheet. The clipboard’s content is in the “text delimited by tabs” format.

- Choose the **Edit > Cut (Ctrl+X)** command to cut the selected item(s) and move it (them) to the clipboard. As an alternative, **right-click** the item(s) and choose the **Cut** command.
- Choose the **Edit > Copy (Ctrl+C)** command to copy the selected item(s) to the clipboard. As an alternative, **right-click** the item(s) and choose the **Copy** command.
- Choose the **Edit > Paste (Ctrl+V)** command to paste at the current position the item(s) contained in the clipboard. As an alternative, **right-click** and choose the **Paste** command.

Deleting entries

- Select the item(s) to be deleted, then choose the **Edit > Delete (Del)** command to delete. As an alternative, press the **Delete** key, or **right-click** and choose the **Delete** command.

Selecting all entries

- Choose the **Edit > Select All (Ctrl+A)** command to select all the entries.
- As an alternative, **right-click** and choose the **Select All** command.

Editing the SongBook Entries

By opening the **Edit** dialog, you can edit the fine details of each new or existing entry.

Editing Style-based entries

This type of entry will automatically select the **Style Play** mode and select a Style.


- Choose a Style-based entry, and **double-click** it to open the **Edit Style Entry** dialog.

With this type of entry, you can choose (respectively) the bank and position number of the assigned Style.

The screenshot shows the 'Style Entry' dialog box with the following fields and annotations:


- Name:** A believer
- Selection No.:** --
- Parameters:** Artist, Genre (Pop Rock), Key, Meter (4/4), Synchro Start, Synchro Stop, Memory.
- Keyboard Sets/STs:** Copy all Keyboard Sets, Keyboard Set 1: Organ, Keyboard Set 2: El. Guitar, Keyboard Set 3: Tenor Sax, Keyboard Set 4: Beat organ.
- Voice Preset:** Bank, Position, Voice Preset (Factory), 01: Chord (Harm.Off), Use global Voice Preset.
- Bank/Style:** Bank, Position, Resource: Rock, 06: 60's R&Roll.
- Text file path:** Unit, Path, Txt File: C:\KORG DISK\MyShow\Lyrics\LoveSong.txt.
- Previous/Next Entry buttons:** +, -
- OK** and **Cancel** buttons.

Parameters – These are the same parameters found in the **Book** pages of the instrument. The Tempo and Master Transpose values are those saved into the Style Settings (Style Performance).


Keyboard Sets/STs – The four Keyboard Sets (STs) contained in the SongBook Entry. You can edit their names, and copy them from a different entry by clicking the **Browse** icon () next to the name.

Voice Preset – Voice Preset assigned to the entry. When the **Use global Voice Preset** checkbox is selected, the global Voice Preset will be used, and you can't choose a local Voice Preset.

Style Bank – Choose the Style Bank from the pop-up menu.

If you select a Direct bank, the Direct SET editable areas appear, to let you choose a SET folder to be used as the Direct SET folder. Click the **Browse** icon () next to the path area to open a standard file selector, and choose a SET folder.

Style – This is the Style inside the selected Bank; both the Style number and name are shown.

Text drive unit and path – Click the **Browse** icon () next to the path area to open a standard file selector, and choose the text file.

The text path is divided into the drive unit (on the left) and the actual path (on the right). This allows you to change the drive separately from the path, so that you can copy entire directories between drives, without having to re-edit long directory strings. You do not need to connect the external drives while editing.

The typical path format is the following:

[label]\foldername1\foldername2\filename.txt

In some cases, the label can be replaced by the unit ID:

c:\foldername1\foldername2\filename.txt

When editing multiple entries, you can only edit the path, but not the file name; this is useful if you renamed a folder, or have moved the text files to a different folder or directory level. Check the **Text file path** checkbox, and enter a string similar to the following one (without any final backslash):

[label]\newfoldername1\newfoldername2

Drive units, like hard drives and USB storage devices, are represented by their label. As an alternative, they can be represented by their ID, as indicated in the following table:

ID/Label	Storage device
Pa4X	
C2: or [KORG DISK]*	Internal memory (SSD)
[KORG HD]*	Internal Hard Disk
[KORG SD]*	Internal memory (microSD)
[label]*	Storage device connected to one of the USB Host ports
Pa3X	
C2: or [label]*	Internal memory (Hard Disk/SSD)
[label]*	Storage device connected to one of the USB Host ports
Pa3XLe/Pa900	
C2: or [KORG DISK]*	Internal memory (SSD)
[KORG SD]*	Internal memory (microSD)
[label]*	Storage device connected to the USB Host port
Pa600/Pa300/HAVIAN 30	
C2: or [KORG DISK]*	Internal memory (SSD)
[label]*	Storage device connected to the USB Host port
Pa2X/Pa800	
F2: or [label]*	Internal SSD-U memory
C: or [label]*	Internal Hard Disk
[label]*	Storage device connected to one of the USB Host ports.
Pa1X	
B:	Floppy Disk
C: or [label]*	Hard Disk
D:	CD Drive
Pa500/Pa588	
E: or [label]*	SD Card
* The [label] is the name assigned to the storage device. When writing the label by hand, do not forget to also include the square brackets around the name (for example, "[KHD_USER]").	

Previous/Next Entry buttons – Click the **Previous** button to edit the previous entry of the list, or the **Next** button to edit the next entry of the list, without having to close the dialog.

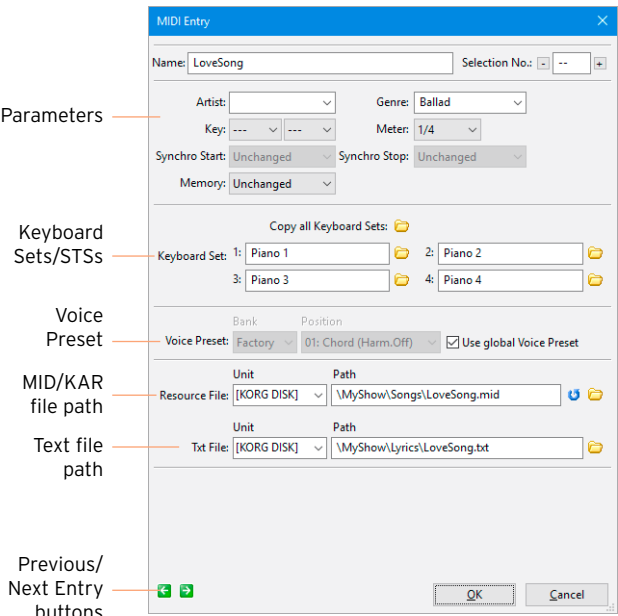
OK/Cancel buttons – Click the **OK** button to confirm changes and close the dialog, or the **Cancel** button to abandon the changes and close the dialog.

Editing MID/KAR-based entries

This type of entry will automatically select the **Song Play** mode, and assign a Standard MIDI File (MID or KAR file) to the Player (or one of the Players).

- Choose a MID/KAR-based entry and **double-click** it to open the **Edit MIDI Entry** dialog.



With this type of entry, you can write the full path of the Standard MIDI File used as the resource.



Parameters – These are the same parameters found in the **Book Edit** pages of the instrument. Entries created on the instrument or imported get the starting Tempo of the MID/KAR file. Entries created in SongBook Editor, or edited in order to change the referred MID/KAR file, get a default blank Tempo value (---) (not shown in this dialog).

Keyboard Sets/STs – The four Keyboard Sets (STs) contained in the SongBook Entry. You can edit their names, and copy them from a different entry by clicking the **Browse** icon (📁) next to the name.

Voice Preset – Voice Preset assigned to the entry. When the **Use global Voice Preset** checkbox is selected, the global Voice Preset will be used, and you can't choose a local Voice Preset.

Standard MIDI File and text paths – Click the **Browse** icon () next to the path area to open a standard file selector, and choose the MID/KAR file or the text file. Click the **Update** icon () to update the information contained in the MID/KAR file (in case the file contains any) (to be used when the linked file has been replaced).

The MID/KAR file and text paths are divided into the drive **unit** (on the left) and the actual **path** (on the right). This allows you to change the drive separately from the path, so that you can copy entire directories between drives, without having to re-edit long directory strings. You do not need to connect the external drives while editing.

The typical path format is the following:

[label]\foldername1\foldername2\filename.mid

In some cases, the label can be replaced by the unit ID:

c:\foldername1\foldername2\filename.mid

When editing multiple entries, you can only edit the path, but not the file name; this is useful if you renamed the folder, or have moved the songs to a different folder or directory level. Check the **Resource file path** checkbox, and enter a string similar to the following one (without any final backslash):

[label]\newfoldername1\newfoldername2

Drive units, like hard drives and USB storage devices, are represented by their label. As an alternative, they can be represented by their ID, as in the table seen above for the Styles.

Previous/Next Entry buttons – Click the **Previous** button to edit the previous entry of the list, or the **Next** button to edit the next entry of the list, without having to close the dialog.

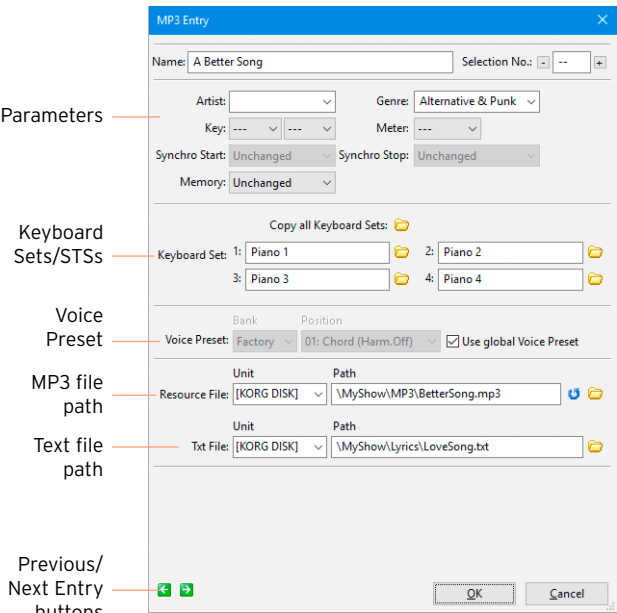
OK/Cancel buttons – Click the **OK** button to confirm changes and close the dialog, or the **Cancel** button to abandon the changes and close the dialog.

Editing MP3-based entries

This type of entry will automatically select the **Song Play** mode, and assign an MP3 file to the Player (or one of the Players).

- Choose an MP3 file-based entry, and **double-click** it to open the **Edit MP3 Entry** dialog.

With this type of entry, you can write the full path of the MP3 file used as the resource.



Parameters – These are the same parameters found in the **Book Edit** pages of the instrument. Entries based on MP3 files get a default blank Tempo value (---) (not shown in this dialog). The **Update** icon (🔄) updates ID3 tags (in case the MP3 file contains any of them).

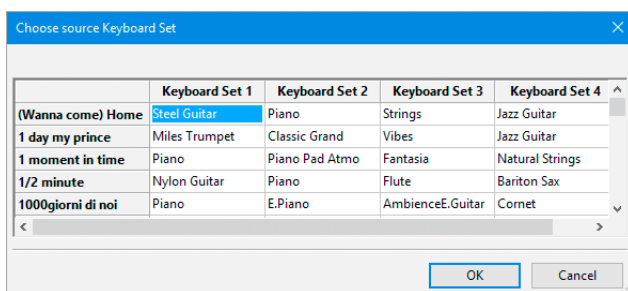
Editing of the various parameters is the same seen above for MID/KAR file-based entries.

Copying the Keyboard Sets/STSs from other entries

While in the **Edit** dialogs, you can copy Keyboard Sets/STSs from other entries.

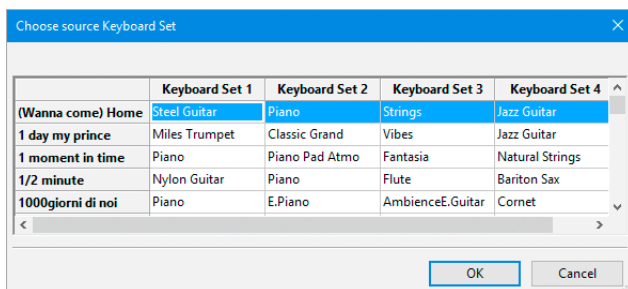
Copying a single Keyboard Set/STS

- 1 While in an **Edit** dialog, click the **Browse** icon (📁) next to the Keyboard Set/STS's name to be replaced.
- 2 When the **Choose source Keyboard Set/STS** dialog opens, choose an item from another entry.



Copying all Keyboard Sets/STSs

- 1 While in an **Edit** dialog, click the **Copy all Keyboard Sets/STSs** icon over the names of the Keyboard Sets/STSs to be replaced.
- 2 When the **Choose source Keyboard Set/STS** dialog opens, choose an entry from which to copy the Keyboard Sets/STSs from.



Custom/Set Lists

Custom/Set Lists are collections of SongBook Entries selected from the complete Book list. You can use them to create your own playlists. Up to 256 Custom/Set Lists can be contained into each SongBook database.

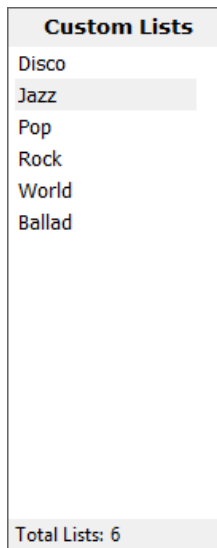
Creating a new Custom/Set List

- Choose the **Edit > New List (Ctrl+L)** command to create a new Custom/Set List. As an alternative, **right-click** anywhere in the **Custom/Set Lists** panel and choose the **New List** command. The new list will appear in the **Custom/Set Lists** panel.

Adding entries to the selected Custom/Set List

- 1 Select the Custom/Set List to which you want to add entries.
- 2 Grab entries from the **Book** panel, and drag them onto the **Selected List** panel.

Hint: You can use the Shift+click shortcut to select multiple contiguous entries, or the Ctrl+click shortcut to select multiple non-contiguous entries.



Seeing the content of a Custom/Set List

- Click a Custom/Set List name in the **Custom/Set Lists** panel to see its content in the **Selected List** panel on its right.

The Custom/Set List's content is shown in a database-like fashion, with each entry in a row, and the various parameters of the entry in adjacent columns.

Selected List											
Index	Sel. No.	Type	Name	Artist	Genre	Key	Tempo	Meter	M.Transp.	Synchro ...	Synchro ...
1	--	sty	All me		Jazz	----	134	4/4	0	unchanged	unchanged
2	--	sty	All you		Jazz	----	140	4/4	0	unchanged	unchanged
3	--	sty	Autumn I...		Jazz	----	170	4/4	0	unchanged	unchanged
4	--	sty	Blues waltz		Jazz	----	148	3/4	0	unchanged	unchanged
5	--	sty	Daylight ...		Jazz	----	145	4/4	0	unchanged	unchanged
6	--	sty	Favourite...		Jazz	----	164	3/4	0	unchanged	unchanged
7	--	sty	Four miles		Jazz	----	220	4/4	0	unchanged	unchanged
8	--	sty	Indian Lo...		Jazz	----	175	4/4	0	unchanged	unchanged
9	--	sty	I get misty		Jazz	----	70	4/4	0	unchanged	unchanged

< Songs In List: 9 >

Contrary to the **Book** list, this list cannot be ordered in a different way by clicking the various column headers. The only possible order is the one shown in the list, that is the order in which the entries will be played back.

Editing entries

You can apply to the entries shown in the **Selected List** panel the same editing operations already discussed for the entries shown in the **Book** panel. See “Editing the SongBook Entries” on page 27 for more information.

Moving entries up/down

You can reorganize the entries in the **Custom/Set Lists** or the **Selected List** panel by moving each of them to a different position.

- Simply drag&drop the entries to move them up or down the list.
- As an alternative, select the item to be moved, then choose the **Edit > Move Up** (Ctrl+Arrow Up) or **Move Down** (Ctrl+Arrow Down) command.
- You can right-click the entry and choose the **Move Up** or **Move Down** command.

Deleting a Custom/Set List

You can delete Custom/Set Lists you no longer need.

- Select the Custom/Set List to be deleted in the **Custom/Set Lists** panel, then press **Delete**.
- As an alternative, **right-click** the item to be deleted, then choose the **Delete** command.

Remapping Style and Pads

When switching to a new instrument, or customizing the Style banks in your instrument, you can automatically remap the Styles and Pads assigned to the SongBook Entries. (Pads are only available on some models).

The remapping table

To remap Styles and/or Pads, you need a dedicated remapping table matching the position of the source and destination Styles and/or Pads. A separate table is needed for the Styles, and one for the Pads. A remapping table can be either a tab-separated TXT file, or a comma-separated TXT file. We suggest you use the TXT format, much easier to read and edit.

To see how a table has to be made, you can use a text editor to examine the supplied remapping tables (found inside your default Documents folder). It is a plain text file (encoded as Unicode UTF-8), with a remapping operation per line. Each element of a line can be separated with any number of tabs. Comment lines start with a '#' symbol. (To correctly align the elements, we suggest to use a non-proportional font).

#	SOURCE		DESTINATION		EXTERNAL SET
#	Bank	Pos	Bank	Pos	
#	-----				
	1	1	2	1	"[DriveName]/MyBook.set"
	1	2	2	2	
	1	3	2	3	
	1	4	2	4	
	1	5	2	5	
	1	6	2	6	"[DriveName]/MyBook.set"
	1	7			
	3	22	18	1	"[DriveName]/MyBook.set"

In general, this is a remapping table's structure:

Source		Destination		Result after conversion
Bnk	Pos	Bnk	Pos	
1	1	1	1	Style/Pad 1 in Bank 1 will remain Style/Pad 1 in Bank 1 (never re-mapped)
1	40			Non remapped. If the "Delete > Song(s) based on non-remapped Styles" option is selected, all songs based on this Style will be deleted.
1	9	1	29	Style/Pad 9 in Bank 1 will be moved to Style/Pad 29 in Bank 1 (different position inside the same bank)
1	37	5	37	Style/Pad 37 in Bank 1 will be moved to Style/Pad 37 in Bank 5 (same position in a different bank)
15	4	13	46	Style/Pad 4 in Bank 15 will be moved to Style/Pad 46 in Bank 13 (different position in a different bank)
(Styles not included in the matching list)				Non remapped. If the "Delete > Song(s) based on non-included Styles" option is selected, all songs based on these Styles will be deleted.

In case you are remapping to the Direct banks, please add the path of the Direct SET after the Destination columns (including the device label).

Source		Destination		Path	Result after conversion
Bnk	Pos	Bnk	Pos		
15	4	37	46	"[label]\foldername1\foldername2\name.set"	Style 4 in Bank 15 will be moved to Direct Style 46 in Bank 37, contained in the NAME.SET folder.

When converting Style-based SongBook Entries, MID/KAR-based Entries will be left untouched, and included in the destination SongBook as they were before remapping.

Please remap a SongBook only once, or entries will be remapped again to the wrong destination.

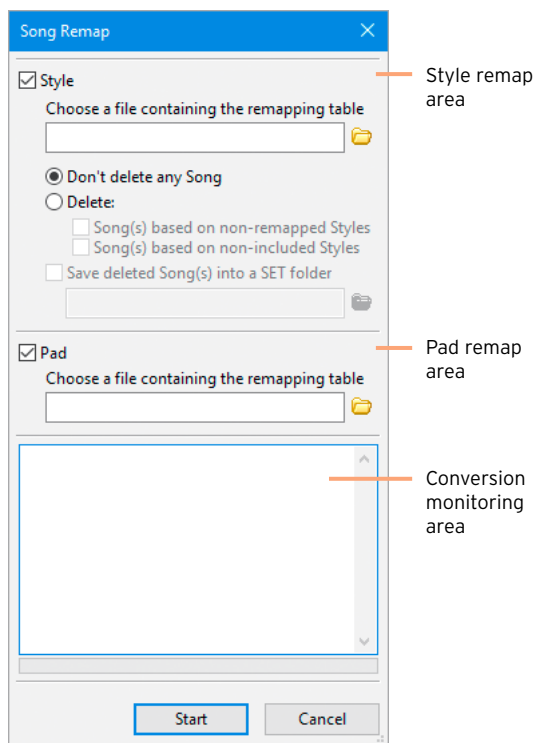
Remapping

Back up the current SongBook files

- On the instrument, save the SongBook into a new SET folder to keep a safety copy.


Edit the old SongBook on the PC

- 1 Use an USB memory device to copy the SET folder containing the SongBook files to be converted to your PC.
- 2 Run SongBook Editor and choose your new Pa-Series instrument as the Target.
- 3 Open the SET folder containing the SongBook files to be converted.
- 4 Choose the **Edit > Song Remap... (Ctrl+R)** command to open the Remap dialog.



Remap the Styles

Style-based SongBook Entries include a link to a Style. If the Styles in your instrument have changed, you can remap these links.

- 1 Select the **Style** checkbox to remap the links to the Styles.
- 2 Click the **Browse** icon  next to the **remapping table name** field to open a standard file selector, and choose the Style's remapping table.

The following table shows the ID number corresponding to each bank of Styles. Each bank may contain the maximum number of Styles shown in the table. Each group of 8 consecutive Styles corresponds to one of the tabs shown in the bottom area of the Style Select window of the instrument.

ID #	Type	Styles per Bank
Pa4X		
1-13	Factory	48
14-23	Favorite	48
24-26	User	48
27-36	Direct Favorite	48
37-39	Direct User	48
Pa3X/Pa3XLe/Pa900/Pa600		
1-15	Factory	40
18-20	User	40
21-32	Favorite	40
Pa300/HAVIAN 30		
1-15	Factory	40
18-20	User	40
21-28	Favorite	40
Pa2X/Pa800		
1-17	Factory	32
18-20	User	32
21-30	Favorite	32
Pa1X		
1-16	Factory	32
18-20	User	32
21-23	Direct FD (B:\DIRECTFD.SET)	32
24-26	Direct HD (C:\DIRECTHD\BANK123.SET)	32

ID #	Type	Styles per Bank
27-29	Direct HD (C:\DIRECTHD\BANK456.SET)	32
30-32	Direct HD (C:\DIRECTHD\BANK789.SET)	32
33	EXB01	64
34	EXB02	64
Pa500/Pa588		
1-14	Factory	32
15-16	User	32

3 Choose whether you want to preserve or delete some entries. This is useful, for example, to delete all the entries based on older Styles you no longer want to use, or not available in a different instrument.

- To preserve all the entries, select the **Don't delete any Song** option.
- To remove the entries based on Styles you no longer use or have been deleted, select the **Delete > Song(s) based on non-remapped Styles** checkbox. This will delete all the entries based on the Styles listed as the **Source**, but without a **Destination**. (If this checkbox is not selected, the entries will be left untouched.)

In the remapping table, include the Styles you no longer use, or have been deleted, in the **Source** column. The **Destination** column will be left empty.

- To remove a large batch of entries, select the **Delete > Song(s) based on non-included Styles** checkbox. This will delete all the entries based on Styles not included in the remapping table as the **Source**. (If this checkbox is not selected, the entries will be left untouched.)


In the remapping table, include all the Styles you want to preserve in the **Source** column, and remap them in the **Destination** column. Leave out of the **Source** column all the Styles you no longer use.

4 If you want to create a SongBook with all the deleted entries, to be later reviewed, select the **Save deleted Song(s) into a SET folder** checkbox. This will save all the deleted entries into a new SET folder. You can choose the SET folder where to save the list; if you type a new name, a new SET folder will be created.

Remap the Pads

Each SongBook Entry may include links to up to four Pads. If the Pads in your instrument have changed, you can remap these links.

1 Select the **Pad** checkbox if you want to remap the links to the Pads.

- 2 Click the **Browse** icon () next to the **remapping table name** field to open a standard file selector, and choose the Pad's remapping table.

The following table shows the ID number corresponding to each bank of Pads. Each bank may contain the maximum number of Pads shown in the table below. Each group of 8 consecutive Pads corresponds to one of the tabs shown in the bottom area of the Pad Select window of the instrument.

ID #	Type	Pads per Bank
Pa4X		
1-20	Factory	48
21-30	User	48
31-40	Local	48
Pa3X/Pa3XLe/Pa900/Pa600		
1-20	Factory	32
21-30	User	32
31-38	Local	32
Pa300		
1-20	Factory	32
21-28	User	32
31-38	Local	32
Pa2X/Pa800/Pa500/Pa588		
1-20	Factory	32
21-30	User	32
31-34	Local	32
Pa1X		
1-20	Factory	32
21-30	User	32

Remap the entries

- Click the **OK** button to remap the SongBook Entries.

While the operation goes on, you can see information about the ongoing conversion in the lower area of the dialog.

Saving the SongBook and reloading it to the instrument

Once finished editing, save the SongBook and load it back to your instrument.

Saving the edited SongBook

After editing, save the edited SongBook.

- Choose the **File > Save (Ctrl+S)** command to save the file at the original position.
- Choose the **Save As... (Ctrl+Shift+S)** command to save a new file at the desired position. When choosing this command, first create a SET folder (for example "MySongBook.set"), then save into it.


Quitting SongBook Editor

When finished editing and saving your data, you can quit SongBook Editor.

- Choose the **File > Quit (Ctrl+Q)** command to quit from SongBook Editor.

Disconnecting the instrument from the PC

After having saved all the files, you can disconnect the instrument from the PC.

- On the PC, click the Window's **Toolbar > Safe Hardware Removal** icon () , and select the instrument's internal memory to disconnect it from the PC.

Loading the edited SongBook on the instrument

To make the edited SongBook active, you must reload it.

- On the instrument, use the relevant **Media (Disk) > Load** operation to load back the edited "SONGBOOK" folder from the SET folder. The active SongBook database will be updated.
- If you moved the linked resources (MID/KAR, MP3, TXT files) to an external storage device (used as an external portable library), connect it to your instrument's **USB HOST** port. Leave this device connected to the instrument each time you want to use the SongBook.

Frequent operations

There are some frequent operations that can be carried on, and that SongBook Editor makes easy to do on a PC.

Changing reference to a bank of Styles

Entire banks of Styles can be freely moved to different ones. This may be useful, for example, when moving a User bank to a Favorite or a Custom Factory one (or vice versa).

Create a new SET containing the SongBook and the Styles

- 1 On the instrument, be sure the SongBook to be edited is already loaded. If not, use the **Load > [foldername.set] > Songbook** operation.
- 2 Separately load each of the old banks of Styles into the new banks, by using the **Load > Style > Bank** operation.
- 3 Save a new SET folder into the internal memory by using the **Save > All** operation. This is the SET folder you will work on from SongBook Editor.

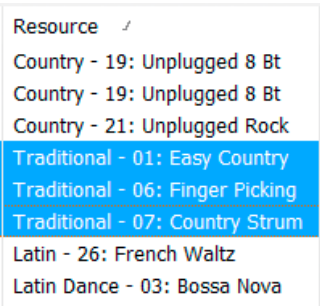
Open the SongBook from the PC

- 1 Connect your instrument to a PC by using a standard USB cable, and enable USB communication (see page 10).
- 2 From the PC, access the internal memory of the instrument.
- 3 Run SongBook Editor and choose your Pa-Series instrument as the Target.
- 4 Open the SET folder you just created. The old SongBook files and the names of the Styles will be loaded.

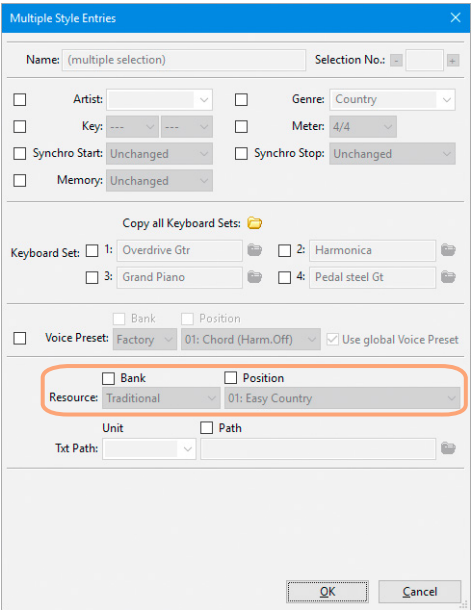
Edit the SongBook from the PC

- 1 In the **Book** panel, click the **Resource** column header to group all the entries by Style bank.

- 2 Select all the SongBook Entries that were linked to a particular Style bank (for example, all the entries linked to all the Styles in the Traditional bank).

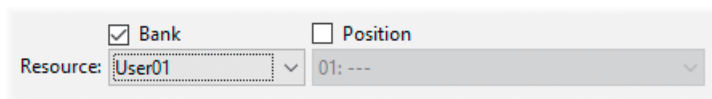


- 3 Right-click the selected entries and choose the **Edit** command to open the **Edit Style Entry** dialog for multiple entry editing.



- 4 In the **Edit Style Entry** dialog, you can edit the **Bank** parameter, by checking the corresponding checkbox. Change the old bank to the bank where you loaded

your Styles (for example, change it from Traditional to User01). Confirm by clicking **OK**.



The screenshot shows a software interface with a 'Resource' dropdown menu. The 'Bank' checkbox is checked, and the 'Position' checkbox is unchecked. The 'Resource' dropdown is set to 'User01', and the '01: ---' dropdown is also visible.

- 5 Notice how all the selected entries are now referenced to a different bank of Styles (for example, from [User01 - 01] to [User01 - 32]).
- 6 Save the SongBook and quit SongBook Editor.
- 7 Disable USB communication (see page 43) and load the SongBook back to your instrument (see page 43).

Changing reference to individual Styles

Multiple-entry editing allows for assigning a different musical resource to several SongBook Entries at once. This can be useful, for example, to point to a Style that you moved to a different position inside your instrument.

Hint: When you have to move several Styles, you could use the **Song Remap** command as a faster alternative.

Create a new SET containing the SongBook with the old Style names

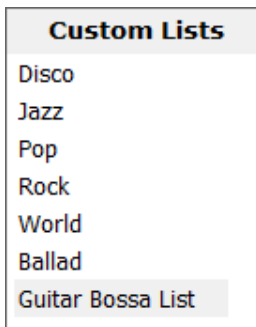
- 1 On the instrument, be sure the SongBook to be edited is already loaded. If not, use the **Load > [foldername.set] > Songbook** operation.
- 2 Save a new SET folder into the internal memory by using the **Save > All** operation. This is the SET folder you will work on from SongBook Editor. It will contain the old Style names.

Open the SongBook from the PC

- 1 Connect your instrument to a PC by using a standard USB cable, and enable USB communication (see page 10).
- 2 From the PC, access the internal memory of the instrument.
- 3 Run SongBook Editor and choose your Pa-Series instrument as the Target.
- 4 Open the SET folder you just created. The old SongBook files and the names of the old Styles will be loaded.

Prepare the Custom/Set Lists

- 1 Create a new Custom/Set List corresponding to one of the Styles to be later moved in the instrument. Name it after the name of the Style. Select the new list to open it in the **Selected List** panel.



- 2 In the **Book** panel, click the **Resource** column header to group all the entries by Style. Find all the entries based on the Style you want to move, and drag them onto the **Selected List** panel. The entries will be added to the new list.

Book

...	Synchro ...	Memory	Keyboard...	Keyboard...	Keyboard...	Keyboard...	Voice Pre...	Resource	Direct Set	Txt File
ed	unchanged	unchanged	Violin	Elect Guitar	Piano	Organ	global	Traditional - 07: Country Strum		
ed	unchanged	unchanged	Bottle	Whistle	Harmonica	Musette	global	Latin - 26: French Waltz		
ed	unchanged	unchanged	Real Nylon	Alto Sax	Piano	Piano & S...	global	Latin Dance - 03: Bossa Nova		
ed	unchanged	unchanged	Nylon Gui...	Trumpet	Piano	Shake Br...	global	Latin Dance - 06: Classic Cha...		
ed	unchanged	unchanged	Alto Sax	El. Piano	Nylon Gui...	Jazz Flute	global	Latin Dance - 17: Guitar Bossa		
ed	unchanged	unchanged	Piano	Alto Sax	Nylon Gui...	Harmonic...	global	Latin Dance - 17: Guitar Bossa		
ed	unchanged	unchanged	Tenor Sax	El. Piano	Nylon Gui...	Harmonica	global	Latin Dance - 17: Guitar Bossa		
ed	unchanged	unchanged	Electric Pi...	Flute	Brass	Flute & M...	global	Latin Dance - 20: Pop Bos...		
ed	unchanged	unchanged	Jazz Guitar	Organ	Strings	global	Latin Dance - 20: Pop Bossa			
ed	unchanged	unchanged	El. Piano	Alto Sax	Jazz Flute	Jazz Club...	global	Latin Dance - 21: Cool Bossa		
ed	unchanged	unchanged	E. Piano	Jazz Flute	Nylon Gui...	Flugel Horn	global	Latin Dance - 21: Cool Bossa		

Filter... ☐ Filtered: 670 Songs Total: 670 Songs

Set Lists

- Disco
- Jazz
- Pop
- Rock
- World
- Ballad
- Guitar Bossa List

Selected List

Index	Sel. No.	Type	Name	Artist	Genre	Key	Tempo	Meter	M.Transp.	S
1	--	sty	Blue boss...		Latin	-----	176	4/4	0	u
2	--	sty	Des a fin ...		Latin	-----	142	4/4	0	u
3	--	sty	Ipanema ...		Latin	-----	136	4/4	0	u

Total Lists: 7 Songs In List: 3

- 3 Repeat the above operations for all the Styles you will later move to a new position in the instrument.

- 4 When finished editing, save the SongBook, and close it.
- 5 Disable USB communication (see page 43) and load the SongBook back to your instrument (see page 43).

Create a new SET containing the SongBook with the new Style names

- 1 On the instrument, load the edited SongBook by using the **Load > [foldername.set] > Songbook** operation.
- 2 Rearrange the Styles.
- 3 Save a new SET folder into the internal memory by using the **Save > All** operation (you may want to overwrite the same SongBook). This is the SET folder you will work on from SongBook Editor. It will contain the new Style names.

Open the SongBook from the PC

- 1 Enable USB communication (see page 10).
- 2 From the PC, access the internal memory of the instrument.
- 3 Run SongBook Editor.
- 4 Open the SET folder you just created/edited. The SongBook files and the names of the new Styles will be loaded.

Edit the SongBook Entries

- 1 In the **Custom/Set Lists** panel, select one of the new Custom/Set Lists where you saved all the entries associated to one of the Styles you just moved.
- 2 In the **Selected List** panel, select all the entries of the selected list.

Selected List							
Index	Sel. No.	Type	Name	Artist	Genre	Resource	Key
1	--	sty	Blue bossanova		Latin	Latin Dance - 17: Guitar Bossa	-----
2	--	sty	Des a fin a dohi		Latin	Latin Dance - 17: Guitar Bossa	-----
3	--	sty	Ipanema girl walk		Latin	Latin Dance - 17: Guitar Bossa	-----

- 3 Right-click the selected entries, and choose the **Edit** command to open the **Edit Style Entry** dialog for multiple entry editing.

- 4 In the **Edit Style Entry** dialog, check the **Bank** and **Position** checkboxes of the **Style** line, choose the bank containing the Style and its new position, then click **OK** to close the dialog.


- 5 Notice how all selected entries are now referenced to the correct Style.
- 6 Repeat the above operations for all the Style you moved to a new position.
- 7 Save the SongBook and load it back to your instrument (see page 43).

Changing the device and path to your MID/KAR, MP3 and Lyrics text files

It is easy to reassign MID/KAR, MP3 or Lyrics text files to the SongBook Entries. This will prove very useful when you switch to a new instrument, and have to move your whole archive to the new location. Also, it will be useful when moving your files to a different device or folder, for example from the internal memory to an USB memory stick, or from the root of a disk to the “Standard MIDI File”, “MP3” or “Lyrics” folder.

When editing a single entry, you can edit both the drive unit, the file path and the file name. When editing multiple entries, you can only edit the drive unit and the file path.

- 1 Select the entry(es) to be edited, **right-click** it (them) and choose the **Edit** command.
- 2 When the (multiple) entries open, locate the **Resource file** or **Text file** line (or check the **Unit** and/or **Path** checkboxes of the **Resources File** and/or **Text Files Path** parameters in case of multiple entries).
- 3 Choose (or write) the new device or path in the relevant boxes.

You can also click the **Browse** icon () to browse and locate the new file (or folder, in case of multiple selection) in the connected devices.

Drive units, like hard drives and USB storage devices, are represented by their label. As an alternative, they can be represented by their ID (see table on page 29).

- 4 Save the SongBook and load it back to your instrument (see page 43).

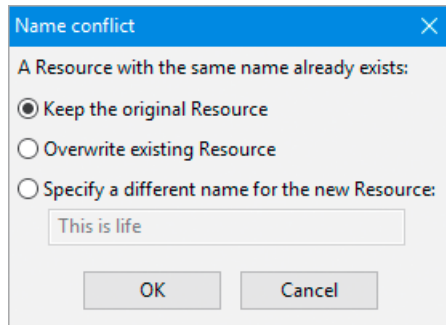
Merging entries from two SongBooks

You can merge entries from different SongBooks, by opening two (or more) application sessions, each one with a different SongBook.

Note: When copying an entry to a different SongBook, the entry's Song Selection Number is removed.

Note: When using multiple application instances, choose the same Target on all instances (see "Choosing the Target" on page 12).

- 1 Run SongBook Editor and open the first SongBook.
- 2 Run a second session of SongBook Editor and open the second SongBook.
- 3 With the windows of both sessions on-screen, drag&drop entries from one window to the other one. You can also drag&drop entries between the **Book** and **Selected List** panels. When moving an entry from a source Selected List to a target one, the corresponding entry will be automatically created at the target Book panel.
- 4 If duplicated entries are found, you are given a choice between keeping the original one, overwriting it, or specifying a different name for the new one.



- 5 Save the SongBook and load it back to your instrument (see page 43).

Exporting a list of entries

You can save the content of the Book list or the selected Custom/Set List as a text (TXT) file. This is the same type of file generated, for example, by the **SongBook > Page Menu > Export As Text File** command on the instrument.

Hint: To print a text file, use a non-proportional font (e.g., Courier) and the landscape page layout.

By using the Export command

- Choose the **File > Export Book... (Ctrl+E)** command to save the Book list as a text (TXT) file.
- Select a Custom/Set List in the **Custom Lists** panel, then choose the **File > Export List '[name of the list]'... (Ctrl+Shift+E)** to save the selected Custom/Set List as a text (TXT) file.

By using the Copy command

- 1 Select some entries in the **Book** or the **Selected List** panel.
- 2 Choose the **Edit > Copy (Ctrl+C)** command to copy the selected data.
- 3 Switch to a text editor or a spreadsheet, and paste the copied data in an open document.

By using drag&drop

- 1 Select some entries in the **Book** or the **Selected List** panel.
- 2 Drag the entries to the open document of a text editor or a spreadsheet, and drop the selected data at the target position.

Note: Drag&drop might not work with some software. Please refer to the software's manual for more information.

Appendix

Keyboard shortcuts

The following table shows the key combinations that can be used to choose menu commands.

Command	Shortcut	Right-click
File menu		
New		
Open...	Ctrl+O	
Save	Ctrl+S	
Save As...	Ctrl+Shift+S	
Import Files...	Ctrl+I	
Export Book...	Ctrl+E	
Export Selected List...	Ctrl+Shift+E	
Preferences...		
Quit	Ctrl+Q	
Edit menu		
Cut	Ctrl+X	✓
Copy	Ctrl+C	✓
Paste	Ctrl+V	✓
Delete	Del	✓
Select All	Ctrl+A	✓
Move Up	Ctrl+Up	✓
Move Down	Ctrl+Down	✓
New Entry > Style	Ctrl+N	✓
New Entry > MIDI	Ctrl+Shift+N	✓
New Entry > MP3	Alt+N	✓
New List	Ctrl+L	
Filter...	Ctrl+F	
Song Remap...	Ctrl+R	
Help menu		
SongBook Editor User Guide	F1	
About...		

Version History

Since its introduction, the SongBook Editor has been subject to improvements and addition of new parameters. Please find below the changes since version 1.0.

Version 2.0.0

- Now compatible with Pa4X, Pa3XLe and HAVIAN 30
- Now compatible with Microsoft Windows 10™
- Added the Song Remap feature (for Styles and Pads)
- Added the Copy Keyboard Set/STS features
- Keyboard Sets/STSs can now be renamed
- Direct SET folder support
- Redesigned Edit dialogs

Version 1.5.0

- Now compatible with Pa900, Pa600 (v1.1) and Pa300
- Now compatible with Microsoft Windows 8/8.1™
- Added Bank, Style and Voice Preset names in the Book and Selected List panels and Edit dialog
- SongBook files saved in the target format

Version 1.4.1

- Fixed a bug when exporting lists in TXT format
- Fixed a bug that prevented editing Song Numbers

Version 1.4.0

- Now compatible with Pa3X v1.1
- Now compatible with Microsoft Windows 7™
- Added support to Unicode characters
- Changed the procedure to select the target instrument
- Bank and Location numbers can be separately entered when editing a Style-based entry
- The Key value is correctly imported from a Standard MIDI File associated to a new SongBook Entry; with Pa3X, this is also true for Master Transpose
- Fixed a bug that caused major and minor keys to appear inverted in the Edit dialog

Version 1.3.0

- Now compatible with Pa2X and Pa500/Pa588
- Improved compatibility with Pa1X v3.01 and Pa800 v1.51
- Now compatible with Microsoft Windows Vista™
- Changed New Entry-MIDI shortcut
- Fixed a bug that caused major and minor keys to appear inverted in the Main screen

Version 1.2.0

- Now compatible with Pa800 and Pa1X (v3.0)
- Style position and Standard MIDI File/MP3/TXT file path editable
- File > Import command added
- Edit > New Entry menu revised
- Edited entries shown in red (or any custom color)
- Selectable file format (Pa1X or Pa800)
- Saved files are no longer compatible with Pa1X prior to v3.0
- New shortcuts

Version 1.1.0

- Now compatible with Pa1X OS (v2.5.x)
- Song Selection Number reset when copying a Entry from a SongBook to a different one
- Harmony Track parameter added
- Resource parameter added

KORG

Address

KORG ITALY SpA
Via Cagiata, 85
60027 Osimo (AN)
Italy

Web

www.korg.com