

KORG

Pa1000

New Features
OS Version 1.5

PA1000 OPERATING SYSTEM VERSION 1.5

Installation and new features

Installing the new operating system

If new, your instrument might already include the new operating system. To check it, please go to the **Media > Utility** page, and read the version number in the lower area of the display.

To install the new operating system, please read the 'Pa-Series - Loading the OS' instructions supplied with the installation file in our web site (www.korg.com).

After having loaded the operating system, please use the **Media > Utility > Factory Restore** command to update the musical resources. Musical resources are loaded with the operating system, but must be updated using this command.

New functions of OS Version 1.5

The following functions are added by upgrading to the new version of the operating system.

Where	New functions	Page
Video	Added Sync option in the Video Out page	8

Functions added by previous OS versions

The following functions are added by upgrading to version 1.3 of the operating system.

Where	New functions	Page
Hardware	New Pa1000 Type B, with HDMI Video Out and a new clock battery	4
Operating System	Separate OS packages	4
MIDI	Added more MIDI Presets	7
Video	Modified Video Out page	8
Shortcuts	New shortcuts to go to the Tuning page while in Record	10

The following functions are added by upgrading to version 1.2 of the operating system.

Where	New functions	Page
Arranger	Choosing a Fill with the Auto Fill + Variation combination	5
Sampling	Increased maximum number of User Samples	5

The following functions are added by upgrading to version 1.1 of the operating system.

Where	New functions	Page
Controllers	Added compatibility with the VOX V860 volume pedal	6
	Curve presets for the volume/expression pedal	6

Hardware

New Pa1000 Type B

[1.3]

Due to some changes in the hardware components we use, there are now two different versions of Pa1000. The type of your instrument is identified by the serial number, as indicated in the following table:

Pa1000 Type	Serial Number	Video Out	Clock Battery
Type A	up to SN# 39999	RCA (Composite)	CR2032
Type B	from SN# 40000	HDMI	CR1632

Please note that, depending on the version of your Pa1000, you will have to choose a different replacement battery. **Do not use replacements different than the one indicated, or you risk to damage the instrument!**

Separate OS packages

[1.3]

With the introduction of Pa1000 Type B, there are now two different versions of the operating system install packages. These versions are functionally identical, apart for some different functions in the Video Out page.

When upgrading the operating system, or executing a full factory reset, Pa1000 will ask for the correct version of the operating system install package. Please follow the instructions appearing on the display.

Arranger

Choosing a Fill with the Auto Fill + Variation combination [1.2]

Fills are phrases that can be used for smoothly bridging between different sections of a song. Their density is similar to that of the same numbered Variations.

Style Element	Suggested use
Fill 1	Fill (lowest density)
Fill 2	Fill (medium-low density)
Fill 3	Fill (medium-high density)
Fill 4	Fill (highest density)

- When you want to choose a Fill, press together the **AUTO FILL** button and the **VARIATION** button whose number corresponds to the Fill you want to choose.

For example, if you want to choose Fill #3, press together the **AUTO FILL** and the **VARIATION 3** buttons.

- If you want, choose a different Variation before the end of the Fill.

Sampling

Increased maximum number of User Samples [1.2]

The maximum number of User Samples you can load has been increased to 15048.

Controllers

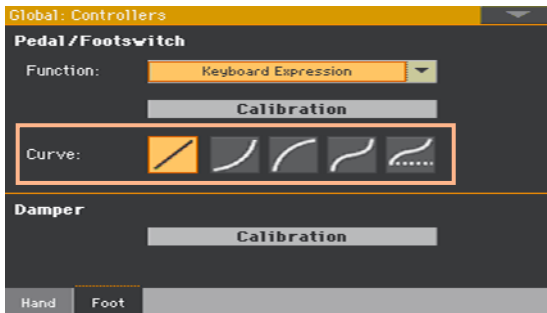
Added compatibility with the VOX V860 volume pedal [1.1]

Pa1000 is now compatible with the VOX V860 volume pedal.

Curve presets for the volume/expression pedal [1.1]






Note: When installing OS v1.1, please recalibrate the volume/expression pedal and choose a curve. Older settings may no longer work.

With some functions assigned to a volume/expression pedal, you can choose a curve, shaping how the pedal will affect the function. When a curve can't be applied, the curve diagrams will appear dimmed.



Choosing a curve preset

- 1 Be sure to have connected an expression pedal, calibrated it, and selected a function. Curve presets can only be selected with some functions.
- 2 Touch one of the Curve buttons to select a curve preset.

Curve	Meaning
	Linear response.
	Exponential response. The function value will change faster toward the top of the pedal range.
	Logarithmic response. The function value will change slower toward the top of the pedal range.
	S-shaped response. The function value will change faster toward the bottom and the top of the pedal range, and will be smoother in the middle.
	S-shaped with offset response. As the previous one, but starting from a value higher than zero.

MIDI

Added more MIDI Presets

[1.3]

Some new MIDI Presets have been added, to quickly configure the instrument when connecting it to various external devices.

Also, there are now more blank MIDI Presets to save your own settings, up to a total of 16 MIDI Presets. All MIDI Presets remain of the User type, and can be overwritten.

This is the updated list of available MIDI Presets:

MIDI Preset	Use
Default	Generic settings, good for most situations.
Master Kbd	When connecting to an external master keyboard.
Player 1	When using an external sound generator (an expander or a virtual instrument) driven by either Player 1 or Player 2. When programming a song on an external sequencer and Pa1000's Sequencer mode.
Player 2	
Accordion 1	Different configurations for connecting a MIDI accordion.
Accordion 2	
Accordion 3	
Tablet	When connecting to a tablet, to remotely select SongBook Entries, or send MIDI messages when selecting them.
Key Control	To play the Upper 3 Sound with an external keyboard.
Mix Control	To control the Volume and Pan of each Sound with an external controller.
Pad Control	To play percussive sounds or special effects (on the Upper 3) from an external set of pads. You can also use it to send chords to the internal arranger.
X/Y Control	To control two sound parameters on the Upper 1 with an external X/Y controller.
Studio Ctrl	To connect various different controllers at the same time.
Breath Ctrl	To control one or more sound parameters on the Upper 1 with a breath controller.

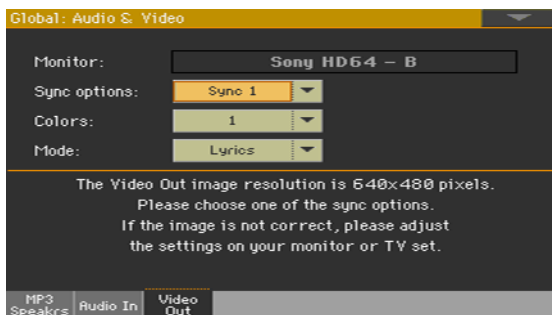
Video

Added Sync option in the Video Out page

[1.5]

In case the instrument and the external video monitor can't automatically choose the correct synchronization option, you can do it manually.

- 1 After having connected the external monitor, go to the **Global > Audio & Video > Video Out** page.



- 2 Use the Sync options parameter to choose one of the synchronization options. Choose the one that works the best with your monitor.

The chosen option will remain memorized. If you connect a different monitor, you may need to repeat the synchronization procedure described above.

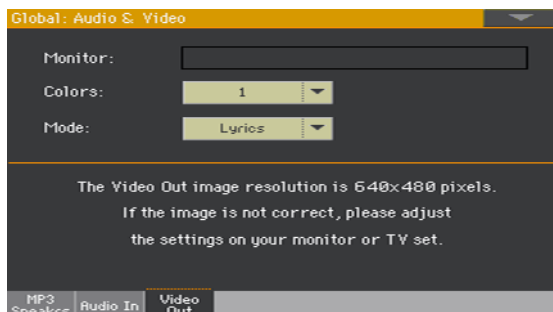
Modified Video Out page

[1.3]

Depending on the version of your Pa1000, and the type of video monitor to be connected, you will have to choose a different cable. You can buy the needed cables at a store that sells television equipment.

Pa1000 Type	Video Out Type	Monitor Connector	Cable
Type A (up to SN# 39999)	RCA	RCA (Composite)	RCA-to-RCA
		SCART	RCA-to-SCART
Type B (from SN# 40000)	HDMI	HDMI	HDMI-to-HDMI
		DVI	HDMI-to-DVI
		VGA	HDMI-to-VGA

With Pa1000 Type B, there are new parameters in the Global > Audio & Video > Video Out page:



When the monitor is recognized, its name appears in the Monitor line. If it doesn't appear, check the connections.

Please note that the supported resolution is 640x480 pixels. In case the picture is not showing correctly, please check the settings in the monitor (for example, the zoom or aspect ratio controls).

Shortcuts

New shortcuts to go to the Tuning page while in Record [1.3]

While in Style Record or Song Record mode, keep the SHIFT button pressed, and press one of the UPPER OCTAVE buttons to go to the Mixer/Tuning > Tuning page.

Improvements and bug fixes

Improvements in OS 1.5.2

Pat000 will now automatically enter standby mode after not using it for twenty minutes. Please save your data frequently.

Note: After an OS update, the **Auto Power Off** checkbox in the **Global > Menu > General Controls > Clock & Power** page will be automatically enabled. If you prefer, you can disable it.

Improvements in OS 1.5.1

The maximum space for User Samples in memory has been increased to 480 MB. With compression, you can now load up to 960 MB of User Samples.

Improvements in OS 1.5.0

General performance improvements.

Bug fixes in OS 1.5.0

Where	Bug fixes
Jukebox	Big sized MIDI files could interrupt the playback of a Jukebox list.

Improvements in OS 1.4.0

Compatibility with some localizations. Only available in some countries.

Bug fixes in OS 1.3.1

Where	Bug fixes
Sampling	When overwriting an existing sample, other samples in memory could be damaged.

Improvements in OS 1.3.0

General performance improvements.

Bug fixes in OS 1.3.0

Where	Bug fixes
Audio Out	With the TalkOver enabled, after a Fade Out the audio could no longer be heard.
Style Record/Edit	After a Copy All or Delete All operation, chord recognition could no longer work correctly.

Improvements and bug fixes in OS 1.2.0

General performance improvements.

Improvements and bug fixes in OS 1.1.0

General performance improvements.

KORG

Address

KORG ITALY SpA
Via Cagiata, 85
60027 Osimo (AN)
Italy

Web

www.korg.com