

KORG minilogue Sound Librarian

Owner's manual

E 3

Table of Contents

Introduction	2
What is the minilogue Sound Librarian?	2
Caution	2
Operating requirements	2
Installation	3
Installation for Mac users	3
Installation for Windows users	3
Quick start	4
Starting the minilogue Sound Librarian.....	4
minilogue Sound Librarian screens and functions	5
Main screen of the minilogue Sound Librarian.....	5
Program list	6
Favorites editor screen	7
Microtuning editor screen	8
Preset Data.....	9
Preference settings	10
MIDI ports	10
Misc.	10
File type	11
Menu	12
File.....	12
Edit	14
minilogue	15
Option.....	15
Troubleshooting	16
Software won't start up	16
Can't transfer data	16

Apple, Mac and Mac logo are trademarks of Apple Inc., registered in the U.S. and other countries.

Windows 7, Windows 8.1 and Windows 10 are trademarks of Microsoft Corporation in the US and other countries.

All product names and company names are the trademarks or registered trademarks of their respective owners.

Specifications and appearance are subject to change without notice for improvement.

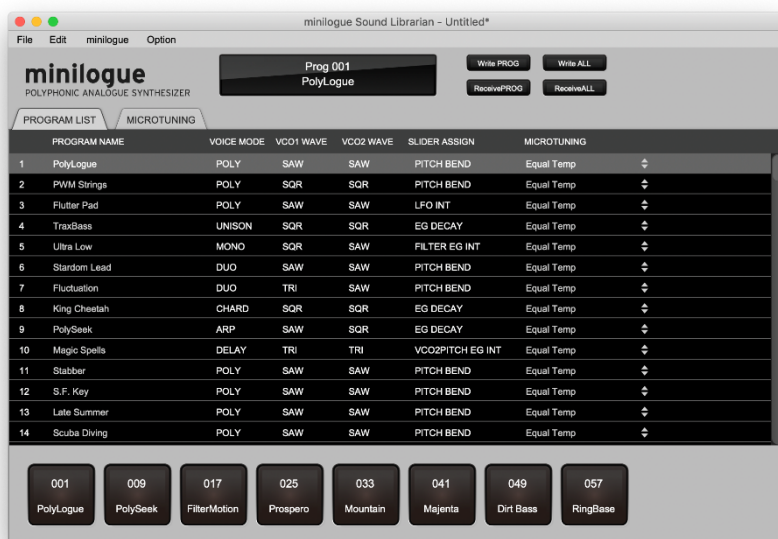
Introduction

Thank you for purchasing the Korg minilogue synthesizer.

To help you get the most out of your new instrument, please read this manual carefully.

What is the minilogue Sound Librarian?

The minilogue Sound Librarian lets you easily sort through the minilogue programs, edit the microtuning and save the data on your computer.



Caution

- ⚠ Do not disconnect your minilogue or power off the unit while the Sound Librarian is running.
- ⚠ Do not resize or move the application window until it starts up.
- ⚠ Do not edit any global parameters on the minilogue while the Sound Librarian is running.
- ⚠ Do not operate your minilogue or the Sound Librarian while any data is being transmitted.
- ⚠ Microtuning is only available in minilogue system version 2.0 and higher.

Operating requirements

A computer that satisfies OS requirements and a USB cable are necessary to use the minilogue Sound Librarian.

Mac

Operating system: OS X 10.11 or later.

Windows

Operating system: Windows 7 SP1 (32bit, 64bit) or later.

- ⚠ Operation with touch panel is not supported when running Windows 8.1 or Windows 10.
- ⚠ **Launching the librarian may take some time if KORG BLE-MIDI Driver has been installed on your computer.**

- ⚠ Full functionality is not guaranteed with all computers that satisfy these system requirements.

Installation

In order to use the minilogue Sound Librarian, you must also download the KORG USB MIDI Driver from the Korg website and install it as described in the accompanying documentation. (<http://www.korg.com/>)

Installation for Mac users

Proceed as follows to install the software on a Mac.

1. Copy the "minilogue Sound Librarian" folder to the "Applications" folder.

Installation for Windows users

Proceed as follows to install the software in Windows.

1. Double click "minilogue Sound Librarian Installer****.exe" (**** denotes version) to start the installation process.
2. The minilogue Sound Librarian installer will start up. Follow the on screen instructions to install the software.

Quick start

Starting the minilogue Sound Librarian

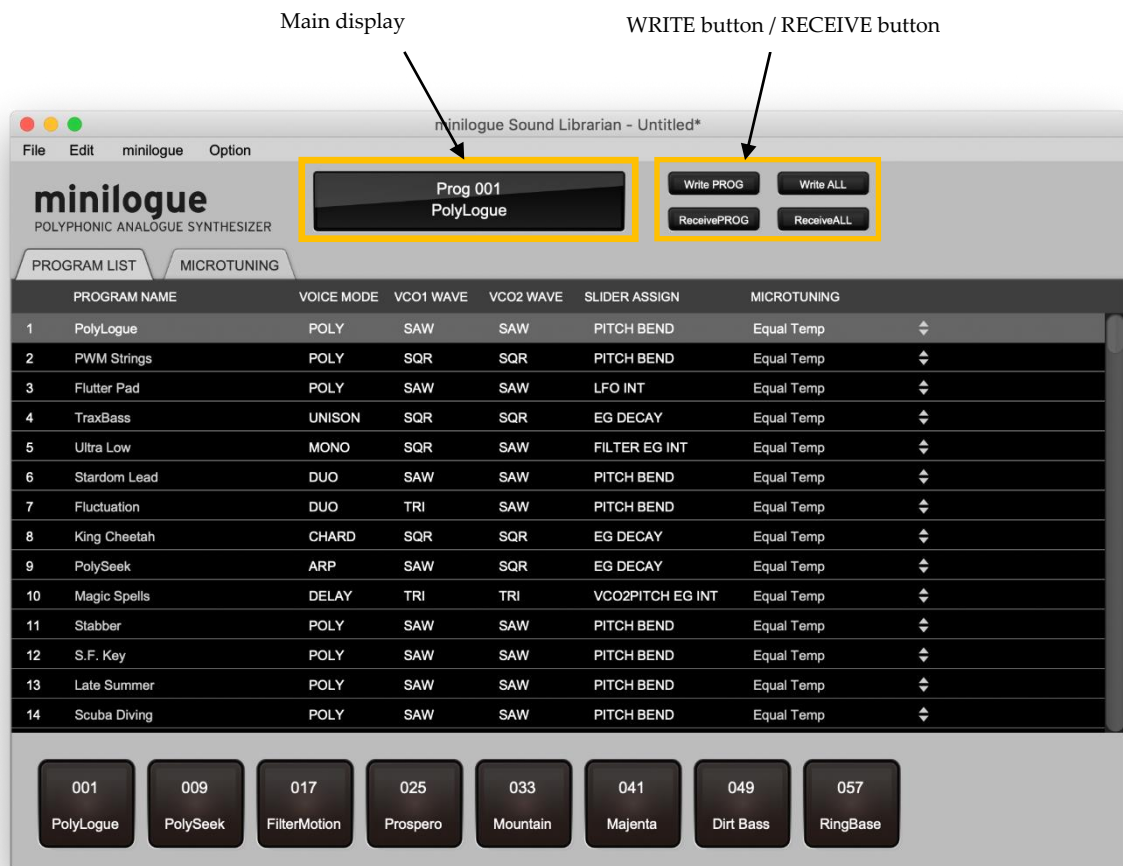
1. Use a USB cable to connect your minilogue to your computer.
2. Start the minilogue Sound Librarian.
 - Mac: "Applications" → "minilogue" → "minilogue Sound Librarian"
 - Windows 7: "Start" → "All Programs" → "KORG" → "minilogue" →
"minilogue Sound Librarian" in the taskbar.
 - Windows 8.1: Home screen "minilogue Sound Librarian"
 - Windows 10: "Start Menu" → "All Programs" → "KORG" → "minilogue" →
"minilogue Sound Librarian" in the taskbar.
3. The minilogue Sound Librarian screen will appear. Program data and user scale data will be automatically loaded from the minilogue.

minilogue Sound Librarian screens and functions

This section provides a brief explanation of the minilogue Sound Librarian's screens and their functions.

Main screen of the minilogue Sound Librarian

This is the screen that is displayed when starting up the minilogue Sound Librarian.



Main display

This shows the program names that you selected.

Write PROG button

Writes the currently selected program(s) in the Program List to your minilogue.

Write ALL button

Writes all programs in the Program List to your minilogue.

ReceivePROG button

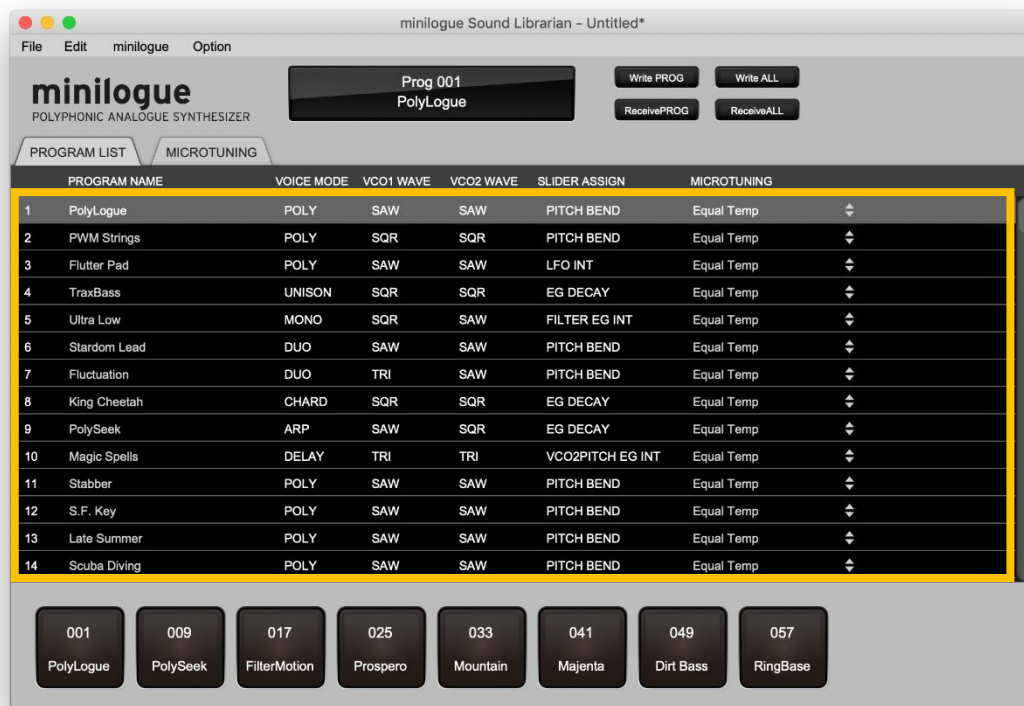
Receives program(s) from your minilogue, according to the program number(s) selected in the Program List.

ReceiveALL button

Receives all programs from your minilogue.

PROGRAM LIST

This screen is used for sorting and editing programs and their names. You can also edit the microtuning scale selection for each program..



Selecting programs

Click on a program in the program list to select it.

If you select a program, the selected program will be transferred to the minilogue and the sound can be checked.

Tip Click and select multiple items in the program list by holding down the command key in Mac or the Ctrl key in Windows.

Sorting programs

Drag and drop items in the program list to change the order of the list.

Tip You can also select several items and sort them at once.

Copying programs

To copy the programs, drag and drop while holding down the Option key on a Mac or the Ctrl key in Windows.

Tip You can also select several items and copy them at once.

Changing program names

Double click on a program name to edit.

Changing MICROTUNING

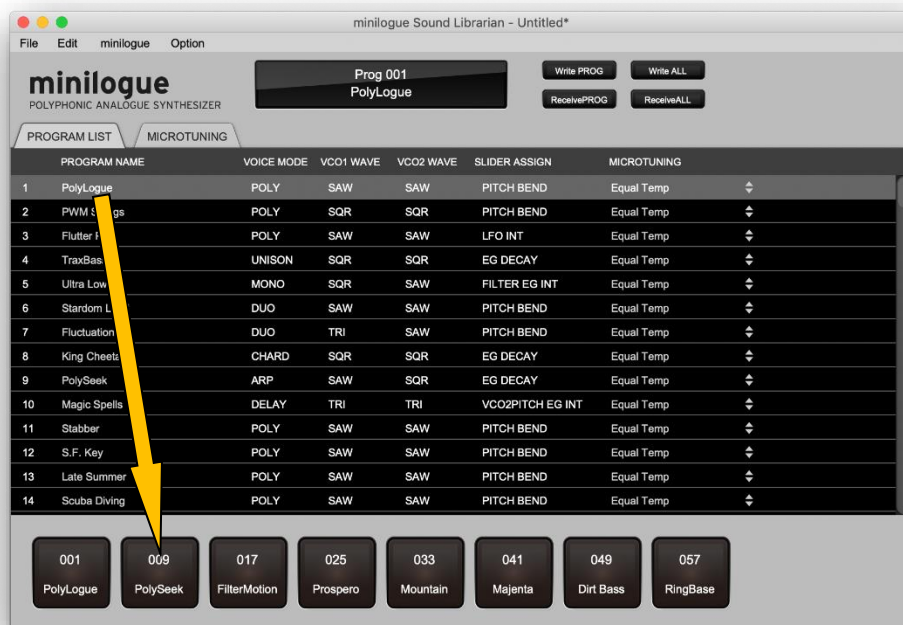
Double click on a microtuning to select a different scale.

Favorites editor screen

This displays, sets and sorts the favorites menu.

Setting favorites

Drag the item from the program list and drop it to the place where you want to save it into the favorite.



Sorting favorites

You can drag and drop items around in the favorites menu to change their order.



Microtuning editor screen

Selecting a User Scale or User Octave

Click on the MICROTUNING tab to open the editor screen..

Click on a USER SCALE or a USER OCTAVE to select it.



Editing Scales

USER SCALE

If a USER SCALE is selected, you can edit all 128 notes by editing the Notes and Cents on the keyboard. You can select the octave by clicking on the piano strip below.

Notes have a range from C-1 to G9 and Cents have a range from -50 to +49. Their values can be changed by dragging or by double-clicking and typing in a value.

USER OCTAVE

When a USER OCTAVE is selected, you can edit the tuning of an octave relative to equal temperament tuning. This tuning will be repeated for every octave across the whole keyboard.

Notes have a range from -C to +B and Cents have a range from -50 to +49. Their values can be changed by dragging or by double-clicking and typing in a value.

Tip Click INITIALIZE to reset all values.

Tip Click TEMPLATE to select a preset scale as a starting point for your own custom scale.

Receiving and Writing single scales

RECEIVE

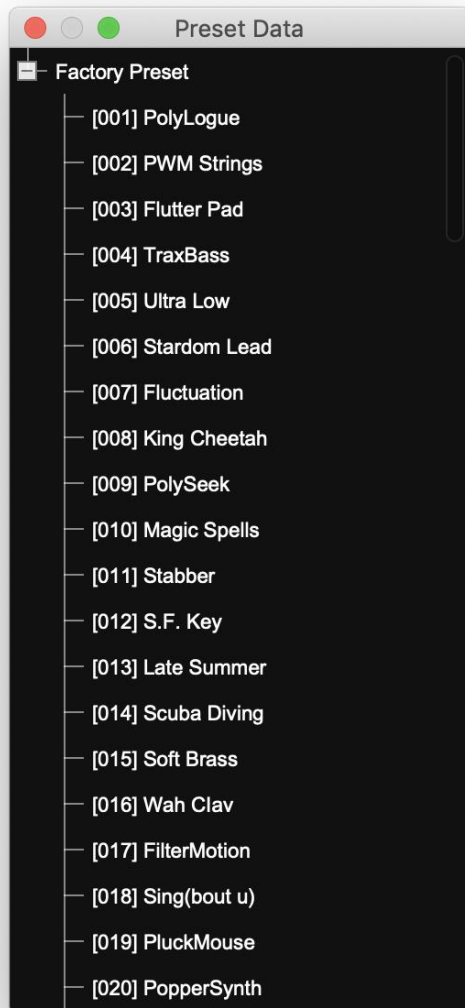
Click RECEIVE to receive the scale stored on the minilogue in the selected microtuning slot.

WRITE

Click WRITE to write the selected scale to your minilogue.

Preset Data

Preset data is a collection of programs, such as factory presets, provided by KORG.
Choose "Option" from the "Open Preset Window..." menu to access the preset data window.



Listen to the presets

Select a program in the preset data window to audition the sound on your minilogue.

Adding programs to the Program List

Drag and drop individual programs from the Preset Data window to add them to the program list.

Install additional preset data

Launch the sound librarian by dragging and dropping the preset data file (*.mnlpreset) on the Sound Librarian application icon.

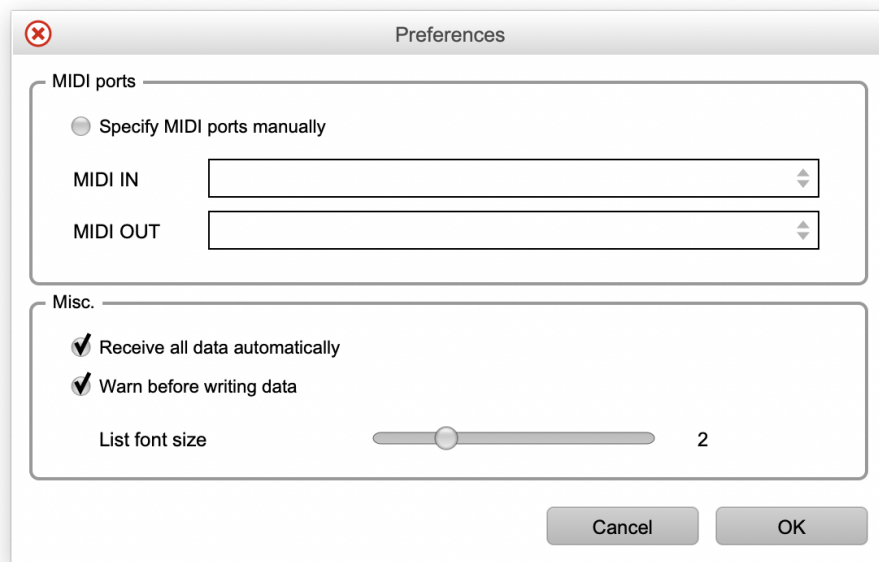
Tip You can also install preset data via "Import preset file" in the "File" menu.

Removing preset data from the preset data window

Click "uninstall all presets and quit" under "options" to uninstall all additional preset data that have been installed.

Preference settings

Choose "Option" from the "Preferences..." menu to access the Preferences dialog box.



MIDI ports

Specify MIDI ports manually

Normally the minilogue that's connected will be detected automatically. Turn this feature on if you want to specify the MIDI ports manually. Use this when several minilogues are connected to the computer. If this setting is on, specify the ports where your minilogue's MIDI IN/OUT controller is connected.

MIDI IN

Specify the MIDI IN port where your minilogue is connected.

Tip Usually this will be the "KBD/KNOB" port in the minilogue.

MIDI OUT

Specify the MIDI OUT port where your minilogue is connected.

Tip Usually this will be the "SOUND" port in the minilogue.

Misc.

Receive all data automatically

If this setting is on, data will be automatically loaded from your minilogue when starting up the minilogue Sound Librarian. If this setting is off, data will not be automatically loaded.

Warn before writing data

If this setting is on, a warning dialog box will appear before writing data to your minilogue. If this setting is off, data will be written without the appearance of a warning dialog box.

List font size

This sets the character font size in the program list and the preset window.

File type

The following files are handled in the minilogue Sound Librarian.

Type	Content	Extension
Library data	A set of 200 programs and user scale data	mnlglib
Program data	Individual program data	mnlgprog
User scale data	Individual user scale data	mnlgtuns
User octave data	Individual user octave data	mnlgtuno
Preset data	Preset collections provided by KORG	mnlgpreset

Menu

File

New

Creates a new library data file.

Open

Loads a library data file.

Save

Saves the edited library data by overwriting the existing library data file.

Save As

Saves the edited library data as a new file with the name you specify.

Load Single Program

Loads a program data file into the selected program in the program list.

Save Single Program

Saves the selected program in the program list as a program data file with the name you specify.

Load Single Scale

Loads a single scale that has been previously saved using the librarian.

Save Single Scale

Saves the scale selected in the microtuning editor.

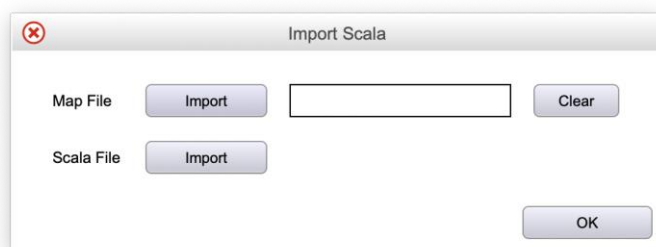
Import Scala

Imports scale data created using Scala software. The scale will be imported into the scale slot selected in the microtuning editor.

To import your scale data with a .kbm file, click Map File IMPORT button. If a keyboard map is necessary it needs to be chosen before importing the .scl file. Next click Scale File IMPORT to choose your .scl file. The scale will be imported into your selected scale slot as soon as the .scl file is opened.

If you import a .kbm file it will remain until it is cleared using the Clear button.

Click OK to close this window.



Export Scala

You can name and export the selected microtuning scale as a set of .scl and .kbm files.

⚠ If you export a .kbm file with the same filename of an existing filename in the same directory, the existing file will be overwritten without warning.

Import preset file

Installs preset data from a preset file.

Quit (Windows only)

Closes the minilogue Sound Librarian.

Edit

Undo

Returns to the state prior to the previous operation.

Redo

Returns to the state prior to executing the "Undo" command.

Cut

Cuts the selected program.

Copy


Copies the selected program.

Paste

Pastes the cut or copied program to the selected program.

Clear

Clears the selected program.

 These Edit functions are not available in the microtuning editor.

minilogue

Receive all

Receives all programs and User Scales and User Octaves from your minilogue.

Write all

Writes all programs and User Scales and User Octaves to your minilogue.

Receive single program

Receive the selected program in the minilogue to the minilogue Sound Librarian's program list.

Write single program

Writes the selected program in the minilogue Sound Librarian's program list to the minilogue.

Option

Open preset data window

Opens the preset data window.

Preferences

Displays the Preferences dialog box.

About

Displays the software version of the minilogue Sound Librarian.

Uninstall all presets and quit

Uninstalls all Preset Data and quits the Sound Librarian.

Troubleshooting

Software won't start up

Make sure that your computer meets the operating requirements.

Check whether other applications might be running.

If other applications are running, the minilogue Sound Librarian might be unable to start up, or might be unable to transfer data.

Can't transfer data

Make sure that the minilogue has been detected by the connected computer.

Windows 7/8.1/10: go to the Control Panel, open "Hardware and Sounds" → "Device Manager," and check the "Sound, Video, and Game Controllers" tab.

Mac: open "Applications" → "Utilities," then start "Audio MIDI Setup" open and check the "MIDI Studio" window by selecting "Show MIDI Window" from the "Window" menu.

Make sure that the latest Korg USB MIDI driver is installed.

You can download the latest Korg USB MIDI driver from the Korg website. (<http://www.korg.com/>)

If you're specifying the MIDI ports manually, make sure that the MIDI port settings are correct.

Make sure that the minilogue is connected directly to your computer without a USB hub.