

# M3 XPANDED Upgrade Guide (for web downloaded files)

An M3 Music Workstation/Sampler with a system software preceding version 2.0 can be upgraded to the M3 XPanded (version 2) by updating the system software. This guide explains how to perform the upgrade. Please read the explanation carefully and follow the directions to ensure proper installation.

## Preparations before installing

### Requirements:

USB storage device, such as a USB memory stick. The device must be MS-DOS formatted with more than 360MByte of empty space available.

### Copy system and EX-USB-PCM data.

1. Un-zip the downloaded file. Please confirm that it contains the following folders and files.

- M3SYS folder
- M3XPSYS folder

“These folders contain” system data for the upgrade.

- EXPCM01.KEP
- EXPCM02.KEP
- EXPCM03.KEP

These are PCM Expansion files (EX-USB-PCM series) data.

2. Copy the two folders and three .KEP files from your computer onto the USB storage device.

## Upgrading the system software

*Note:* In order to upgrade to the M3 XPANDED, you'll need to use the “Update System Software” menu command to perform a system upgrade two times.

1. Power-on the M3.

⚠ This upgrade will rewrite the contents of the internal data such as the programs and combinations. If the internal memory of your M3 contains important data that you want to keep, you must use the Media mode “Save .PCG” command to save it on your own USB storage device before you can proceed with this upgrade procedure.

This upgrade will also overwrite the data of effect presets P01–P15. If you've created effect presets, you should save them to U00–U15 before you proceed with the upgrade. Please refer to “Write FX Preset” (page 119) in the M3 XPANDED Parameter Guide. When programs/combinations that were saved by M3 version 1 are loaded into the M3 XPANDED, some sounds may not be completely identical. For details, refer to “Compatibility with the M3 (system version 1)” in the M3 XPANDED Parameter Guide” (page 657).

2. Connect the USB storage device to the USB A connector of your M3.

Do not connect any other USB device.

3. Press the MODE GLOBAL switch to enter Global mode.

4. The display will show the P0: Basic Setup page. If this page is not shown, press the EXIT switch.

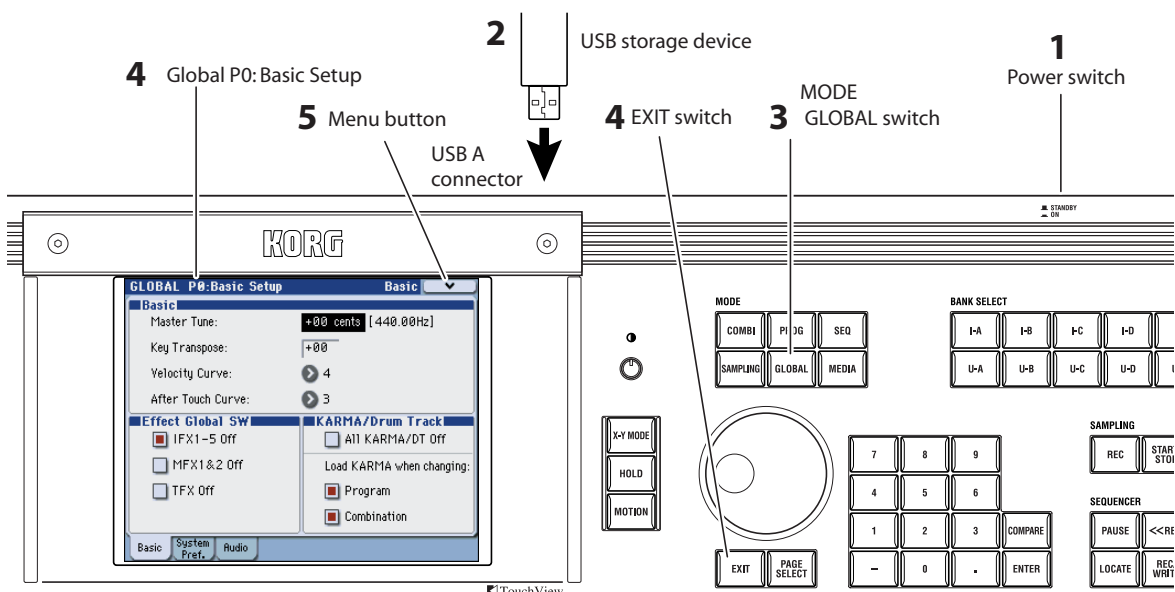
5. In the upper right area of the display, press the menu button and choose the “Update System Software” command.

6. A dialog box will appear. Click the OK button.

The system update will begin.

⚠ Do not power-off the M3 or disconnect the USB storage device while the system update is in progress. Doing so may render the system unable to start up.

7. When the update has completed successfully, the message “Completed. Please turn the power off, and then on again” will appear.



---

**8. Turn the power off. Then turn the power on again, and verify that the opening screen indicates version V2.0 or later.**

*Note:* If the message “File/path not found” appears when you execute the command, execute the command once again.

**9. When the opening screen has disappeared, begin the second update.**

Perform the update as described in steps 3–8 above.

When you turn on the power again in step 8, the opening screen will show the XPanded logo.

If the USB storage device is connected, the EX-USB-PCM03 will be auto-loaded from the USB storage device after the system has loaded.

*Note:* Never disconnect the USB storage device containing the KEP file while the EX-USB-PCM data is being loaded.

This completes the upgrade.

Turn off the power to finish the procedure.

\*If you have any questions, please contact your local Korg distributor.

---

## About the Owner's Manual

The downloaded files will also contain a “Manuals” folder. Please refer to the PDF manuals in this folder for more information about the new features in this M3 XPanded upgrade.

You can read these documents using any computer with a PDF reader (such as Adobe Acrobat), and print them if you wish.

For information on what's new, please see M3XP\_SupplG\_E.pdf.

---

## Data handling

Improper use or malfunction may cause the contents of the memory to be lost, so we recommend that you save important data on a backup CD or other media. Please be aware that Korg will accept no responsibility for any damages which may result from loss of data.